

**INSTRUMENT APPROACH
CHART (IAC)**

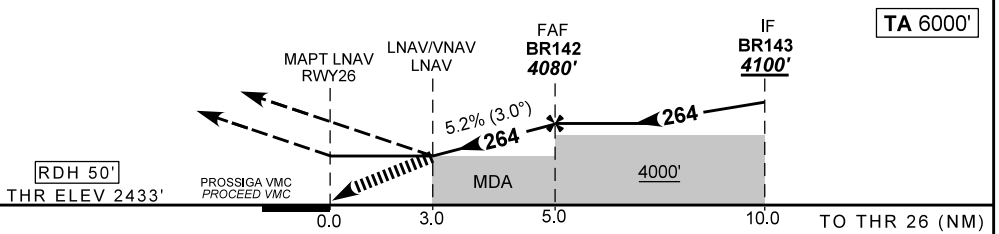
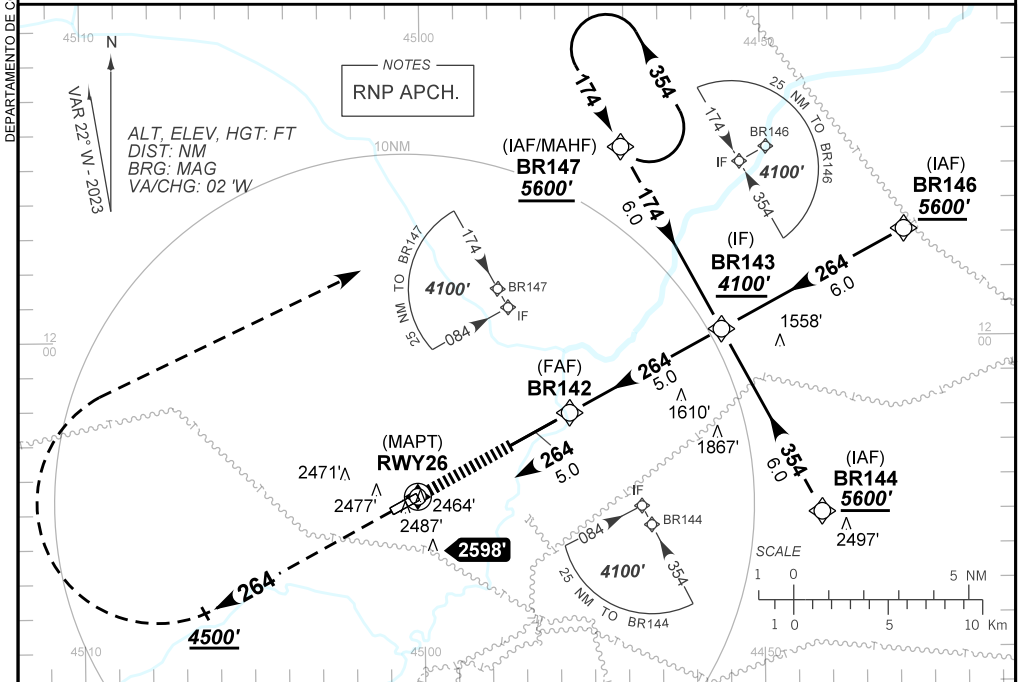
BARREIRAS / Dom Ricardo Weberberger (SNBR)

AD ELEV: 2451'

RNP RWY 26

ATIS NIL	ERAA 132.35	APP NIL	TWR NIL	GNDC NIL
TEMP LNAV/VNAV MIN -10°C / MAX 50°C	FINAL CRS 264°	FAF: 4080'	LNAV/VNAV DA / (OCH): 3433' / (1000')	LNAV MDA / (OCH): 3440' / (1010')

APCH Perdida: Subir para **5600'**. Manter proa **264** até **4500'**. Após, curvar à DIREITA direto BR147 para espera.
Missed APCH: Climb to **5600'**. Maintain heading **264** until **4500'**. After, turn RIGHT direct BR147 for holding.



RWY26	3.0	4.0	BR142				Ground Speed (KT)	090	110	130	150	170	190
ALT	3440	3757	4080				FPM	500	600	700	800	900	NA
(HGT)	1010	1324	1647				FAF-MAPT	NIL					

STRAIGHT-IN	CAT	A	B	C	D	E	
	DA / (OCH)	3433' / (1000')					NA
LNAV/VNAV	ALS/NO ALS/ RVR ALS (m)	NIL / 5000 / NIL					
	MDA / (OCH)	3440' / (1010')					
LNAV	ALS/NO ALS/ RVR ALS (m)	NIL / 5000 / NIL					
	MDA / (OCH)	NA					
CIRCLING	MDA / (OCH)	NA					
	VIS (m)	NA					

CHANGES: NEW CHART.