

INSTRUMENT APPROACH
CHART (IAC)

CAMPINAS / Viracopos, INTL (SBKP)

AD ELEV: 2170'

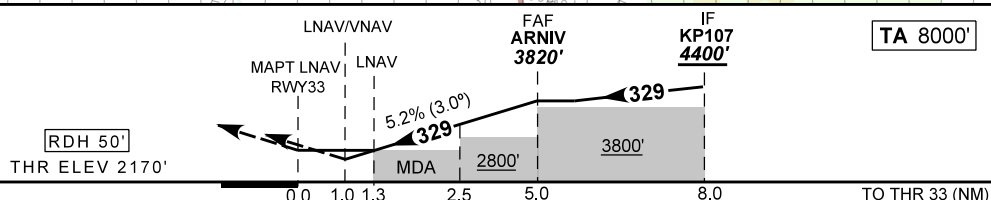
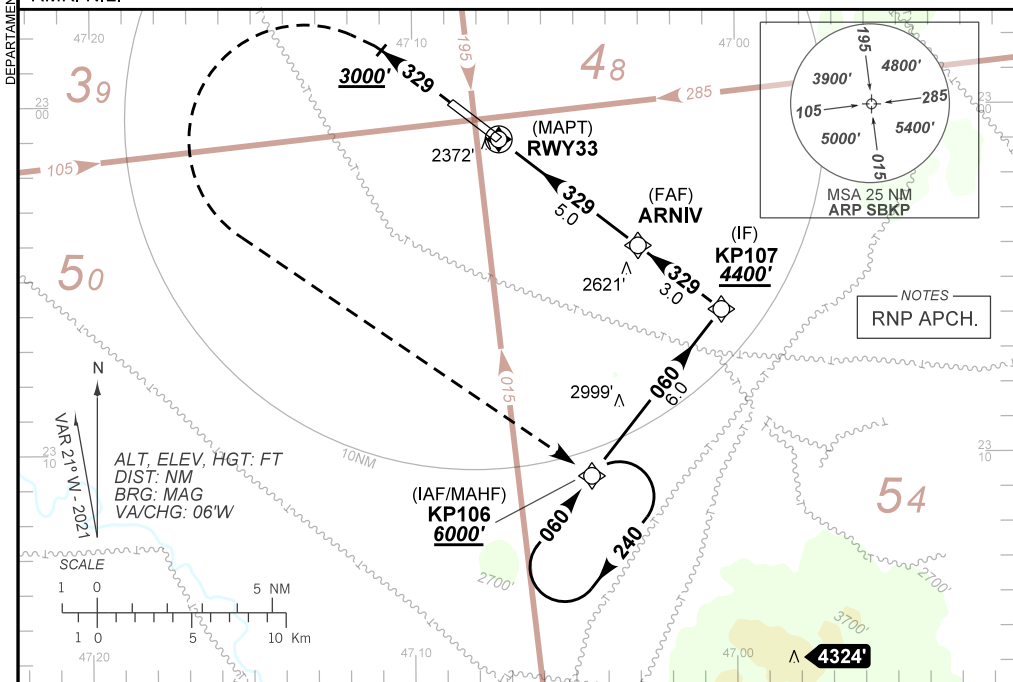
RNP X RWY 33

ATIS 127.825	APP SÃO PAULO 119.05 119.15 119.25 119.6 119.8 120.05 120.25 120.85 121.40 122.75 123.25 124.15	TWR CAMPINAS 118.25	GNDC CAMPINAS 121.90
-----------------	---	------------------------	-------------------------

TEMP LNAV / VNAV MIN -10° C/MAX 50° C	FINAL CRS 329°	FAF: 3820'	LNAV / VNAV DA / (OCH): 2533' / (363')	LNAV MDA / (OCH): 2620' / (450')
--	-------------------	---------------	---	-------------------------------------

APCH Perdida: Subir para **6000'**. Manter rumo **329** até cruzar **3000'**. Após, curvar à ESQUERDA direto KP106 para espera.
Missed APCH: Climb to **6000'**. Maintain course **329** until passing **3000'**. After, turn LEFT direct to KP106 for holding

RMK: NIL.



RWY33	1.0	2.0	3.0	4.0	ARNIV		Ground Speed (KT)	090	110	130	150	170	190
ALT	2533	2857	3175	3494	3820		FPM	500	600	700	800	900	1050
(HGT)	363	687	1005	1324	1642		FAF-MAPT			NA			

STRAIGHT-IN	CAT	A	B	C	D	E
	DA / (OCH)		2533' / (363')			
LNAV/VNAV	ALS/NO ALS/ RVR ALS (m)	NIL / 1700 / NIL				NA
	MDA / (OCH)	2620' / (450')				
LNAV	ALS/NO ALS/ RVR ALS (m)	NIL / 1700 / NIL		NIL / 2100 / NIL		
	MDA / (OCH)	NA				
CIRCLING	MDA / (OCH)	NA				
	VIS (m)	NA				

CHANGES: NEW CHART.

DEPARTAMENTO DE CONTROLE DO ESPAÇO AÉREO