

**INSTRUMENT APPROACH
CHART (IAC)**

SANTO ÂNGELO / Santo Ângelo (SBNM)

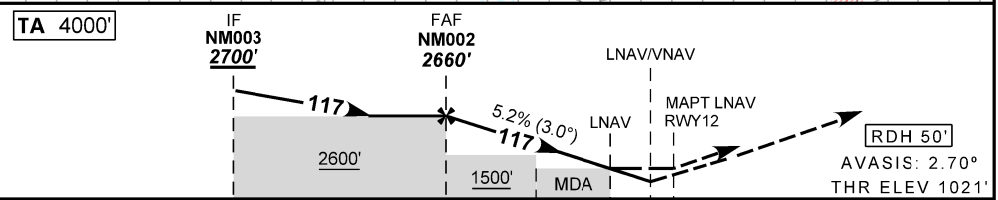
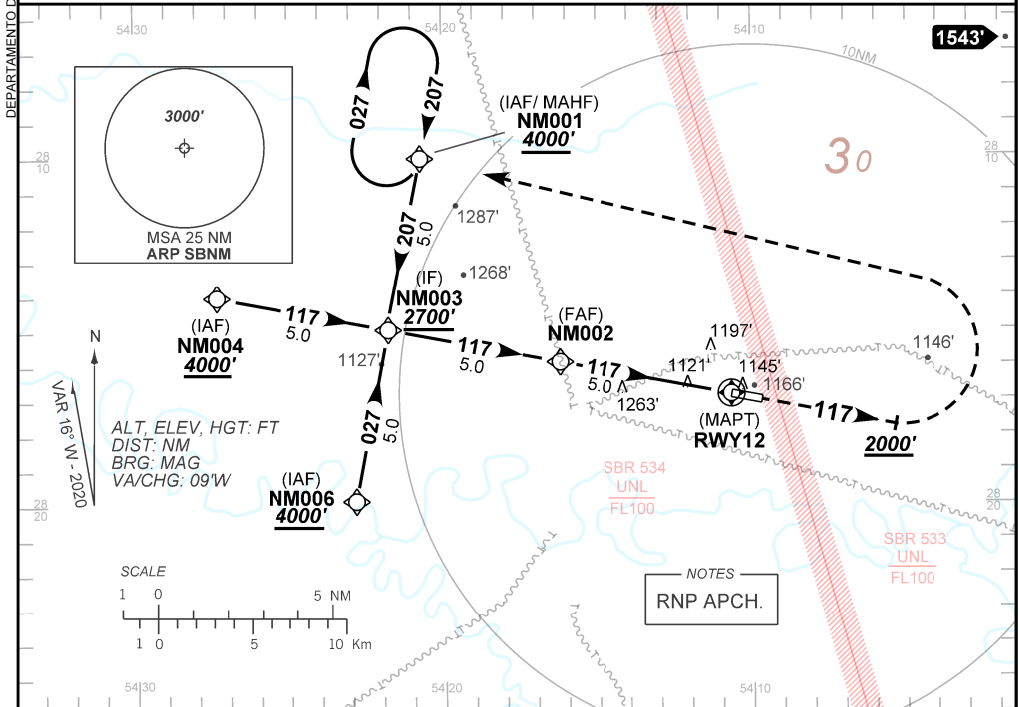
RNP RWY 12

AD ELEV: 1056'

ATIS NIL		APP NIL		AFIS SANTO ÂNGELO 131.65		GNDC NIL	
TEMP LNAV/VNAV MIN -10°C / MAX 50°C		FINAL CRS 117°		FAF: 2660'		LNAV/VNAV DA / (OCH): 1316' / (295')	
						LNAV MDA / (OCH): 1400' / (380')	

APCH Perdida: Subir para **4000'** no rumo **117**. Após **2000'**, curvar à ESQUERDA direto NM001 para espera.

Missed APCH: Climb to **4000'** on course **117**. After **2000'**, turn LEFT direct to NM001 for holding.



TO THR 12 (NM) 10.0 5.0 2.1 1.0 0.8 0.0

	NM002	4.0	3.0	2.1	1.0	RWY12	Ground Speed (KT)	090	110	130	150	170	190
	2660	2345	2026	1735	1400	ALT	FPM	500	600	700	800	900	NA
	1639	1324	1005	714	380	(HGT)	FAF-MAPT	NIL					

STRAIGHT-IN	CAT	A	B	C	D	E
	DA / (OCH)	1316' / (295')				NA
LNAV/VNAV	ALS/NO ALS/ RVR ALS (m)	NIL / 1600 / NIL				
	MDA / (OCH)	1400' / (380')				
LNAV	ALS/NO ALS/ RVR ALS (m)	NIL / 1600 / NIL		NIL / 1700 / NIL		
	MDA / (OCH)	NA				
CIRCLING	MDA / (OCH)					
	VIS (m)					

CHANGES LAYOUT

AIRAC AMDT 2207A1 14 JUL 22

SBNM_IAC_00D 1/1
IAC RNP RWY 12