

**INSTRUMENT APPROACH  
CHART (IAC)**

**PORTO ALEGRE / Canoas, MIL (SBCO)**

**VOR X RWY 31**

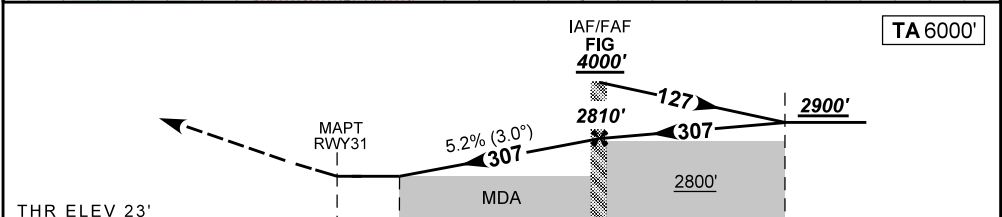
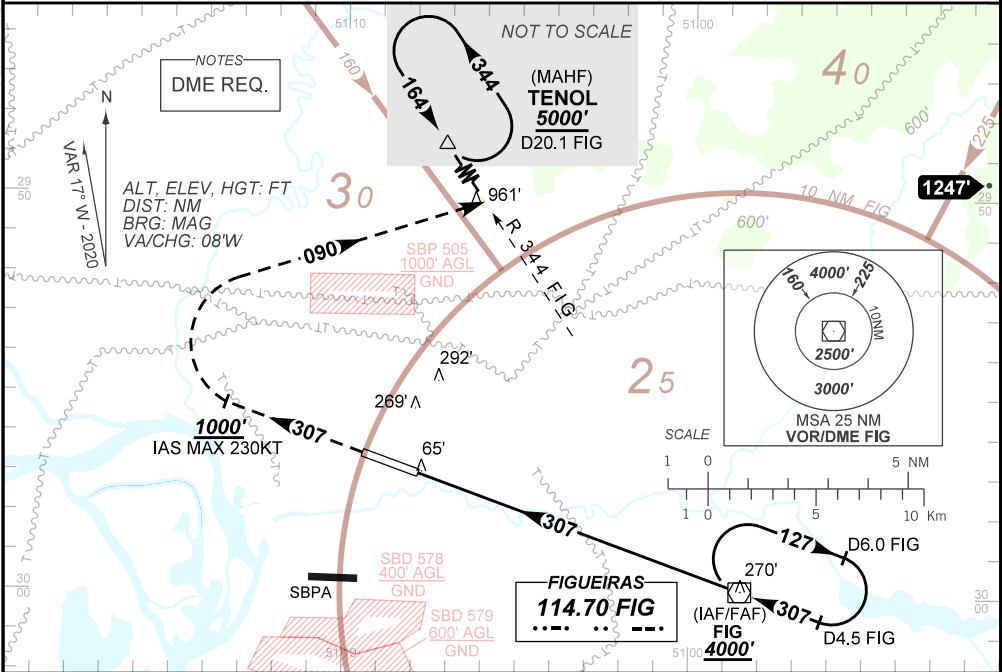
**AD ELEV: 26'**

ATIS <b>NIL</b>	APP PALEGRE <b>119.00 120.10 120.55 128.90</b>			TWR CANOAS <b>118.50 122.80 (MIL)</b>	GNDC CANOAS <b>121.70</b>
VOR FIG <b>114.70 MHz</b>	FINAL CRS <b>307°</b>	FAF <b>2810'</b>	<b>N/A</b>		VOR MDA / (OCH): <b>520' / (500')</b>

APCH Perdida: Subir para **5000'**. Manter rumo **307** até **1000'**. Após, curvar à DIREITA proa **090** para interceptar a RDL **344** do VOR FIG até TENOL para espera.  
Missed APCH: Climb to **5000'**. Maintain course **307** until **1000'**. After, turn RIGHT heading **090** to intercept **344** RDL FIG VOR until TENOL for holding.

**RMK: Não autorizado esperas simultâneas sobre Canoas e Porto Alegre no mesmo nível.  
Unauthorized simultaneous holding over Canoas and Porto Alegre on the same flight level.**

DEPARTAMENTO DE CONTROLE DO ESPAÇO AÉREO



THR ELEV 23'										
TO THR 31 (NM)	0.0	1.4						8.6	13.1	
TO FIG (DME)		8.6	7.2					0.0	4.5	

RWY31	1.4	2.0	3.0	4.0	5.0	6.0	7.0	8.0	FIG	Ground Speed (KT)	090	110	130	150	170	190
ALT	520	713	1031	1350	1668	1987	2305	2623	2810	FPM	500	600	700	800	900	1000
(HGT)	500	687	1005	1324	1642	1961	2279	2597	2784	FAF-MAPT	NA					

STRAIGHT-IN	CAT	A	B	C	D	E
	MDA / (OCH)	520' / (500')				
VOR	ALS/NO ALS/ RVR ALS (m)	NIL / 1600 / NIL			NIL / 2300 / NIL	
	MDA / (OCH)	NA				
CIRCLING	VIS (m)	NA				

CHANGES: DIST.