

**INSTRUMENT APPROACH  
CHART (IAC)**

**BRASÍLIA / Pres. Juscelino Kubitschek, INTL (SBBR)**

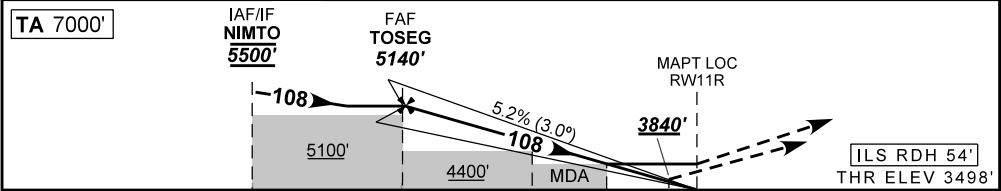
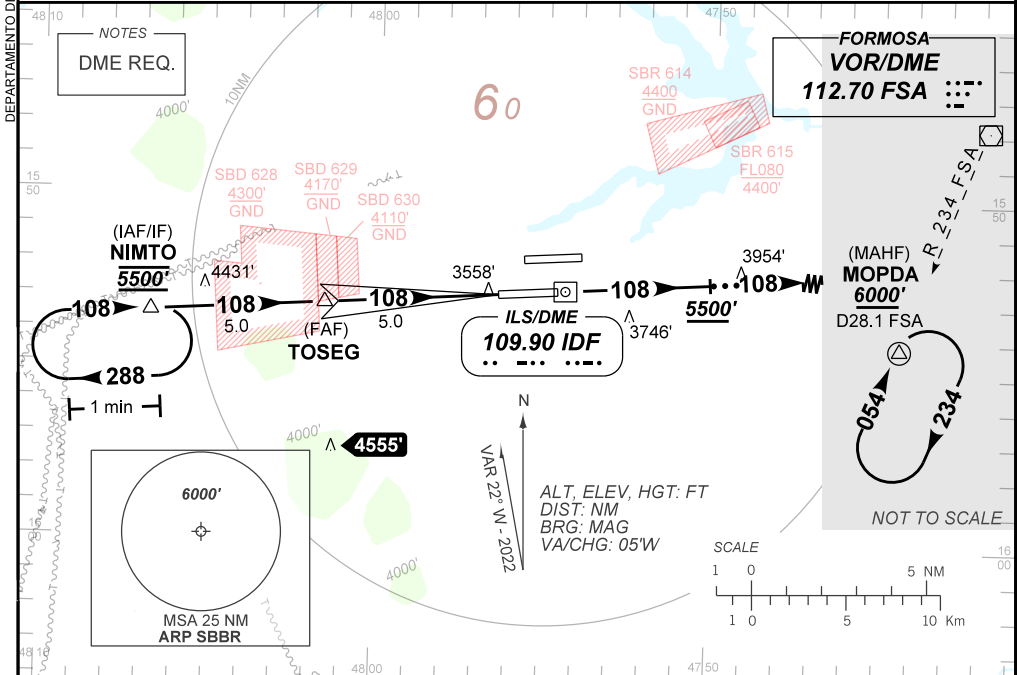
**AD ELEV: 3498'**

**ILS T or LOC T RWY 11R**

D-ATIS <b>127.80</b>		APP BRASÍLIA <b>120.65 129.15 129.60 119.50</b>			TWR BRASÍLIA <b>118.10 118.45 118.75</b>		GNDC BRASÍLIA <b>121.80 121.95</b>		
LOC IDF <b>109.90 MHz</b>		FINAL CRS <b>108°</b>		FAF: <b>5140'</b>		CAT I <b>DA / (OCH): 3840' / (350')</b>		LOC <b>MDA / (OCH): 3880' / (390')</b>	

APCH Perdida: Subir para **6000'**, Manter proa **108** até **5500'**, gradiente 5%. Aguardar vetorização radar para interceptar RDL **234** do VOR FSA para espera em MOPDA.

Missed APCH: Climb to **6000'**, Maintain heading **108** up to **5500'**, gradient 5%. Wait for radar vectoring to intercept **234** RDL FSA VOR for holding on MOPDA.



TO THR 11R (NM)	10.0	5.0	2.7	1.0	0.9	0.0
TO IDF (DME)	11.9	6.9	4.6	2.9	2.8	1.9

TOSEG	4.0	3.0	2.7	2.0	1.0	RWY11R	Ground Speed (KT)	090	110	130	150	170	190
5140	4826	4507	4411	4189	3880	ALT	FPM	500	600	700	800	900	1000
1642	1328	1009	913	691	390	(HGT)	FAF-MAPT	NA					

STRAIGHT-IN	CAT	A	B	C	D	E
	DA / (OCH)	3840' / (350')				
CAT I	ALS/NO ALS/ RVR ALS (m)	900 / 1600 / 850				
	MDA / (OCH)	3880' / (390')				
LOC	ALS/NO ALS/ RVR ALS (m)	900 / 1600 / 850			1100 / 1800 / 1000	
	MDA / (OCH)	NA				
CIRCLING	MDA / (OCH)	NA				
	VIS (m)	NA				

CHANGES: IDENT.