

STANDARD DEPARTURE CHART **BELO HORIZONTE / Pampulha - Carlos Drummond de Andrade (SBBH)**  
**INSTRUMENT (SID)**

**RWY 13**

**AD ELEV: 2589'**

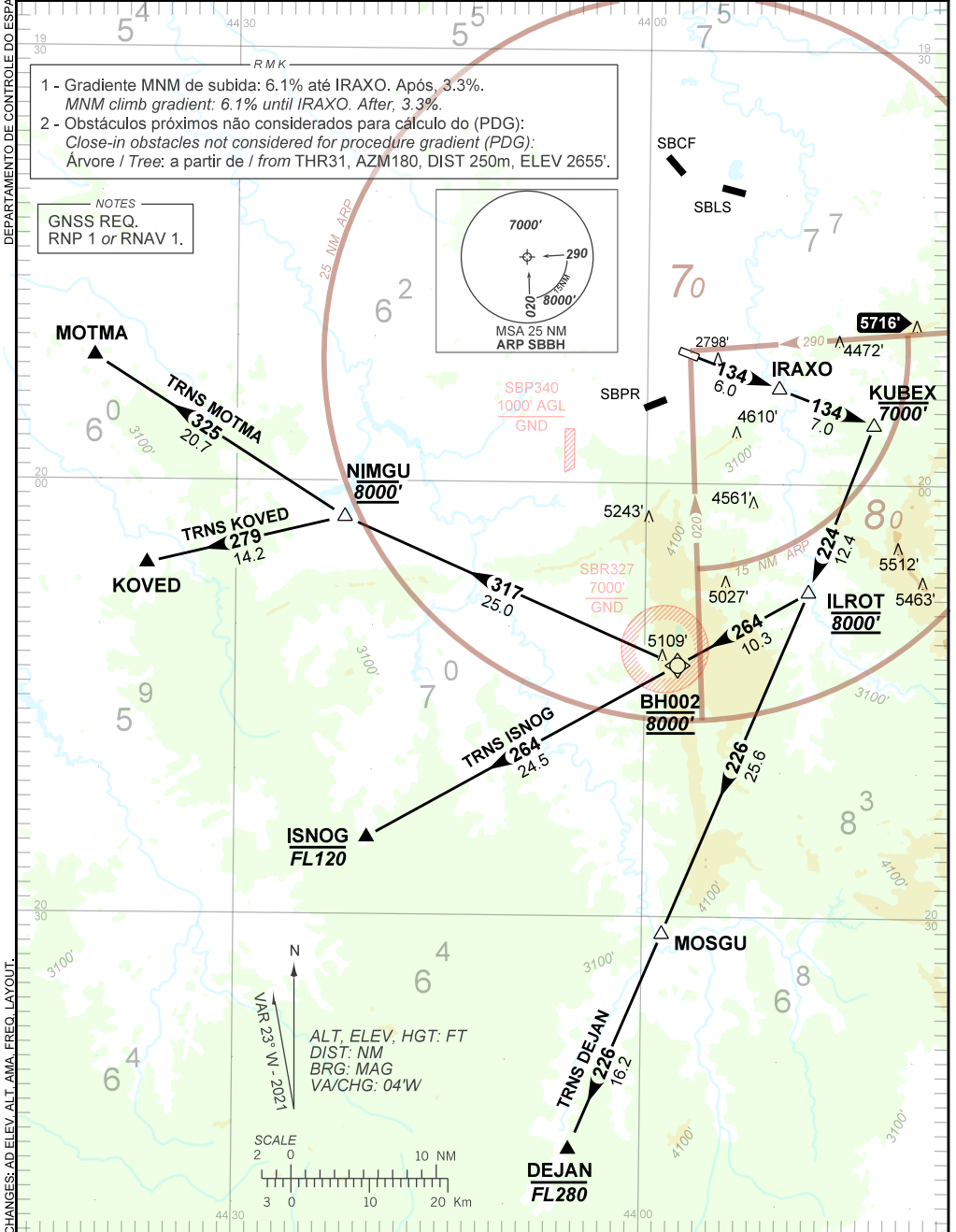
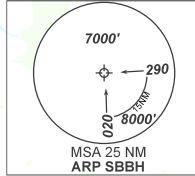
**RNAV ILROT 1A**

<b>TA 8000'</b>	<b>D-ATIS 127.45</b>	<b>TWR BELO HORIZONTE 118.00</b>	<b>APP BELO HORIZONTE 119.10 119.30 119.65 120.20 128.55 129.10 129.40</b>	<b>ACC BRASÍLIA 124.80 135.55</b>	<b>ACC CURITIBA 124.00 125.35 128.25</b>
-----------------	----------------------	----------------------------------	--	-----------------------------------	--

DEPARTAMENTO DE CONTROLE DO ESPAÇO AÉREO

- 1 - Gradiente MNM de subida: 6.1% até IRAXO. Após, 3.3%.  
 MNM climb gradient: 6.1% until IRAXO. After, 3.3%.  
 2 - Obstáculos próximos não considerados para cálculo do (PDG):  
 Close-in obstacles not considered for procedure gradient (PDG):  
 Árvore / Tree: a partir de / from THR31, AZM180, DIST 250m, ELEV 2655'.

NOTES  
 GNSS REQ.  
 RNP 1 or RNAV 1.



CHANGES: AD ELEV. ALT. AMA. FREQ. LAYOUT.