

DEPARTURE CHART
INSTRUMENT (SID)

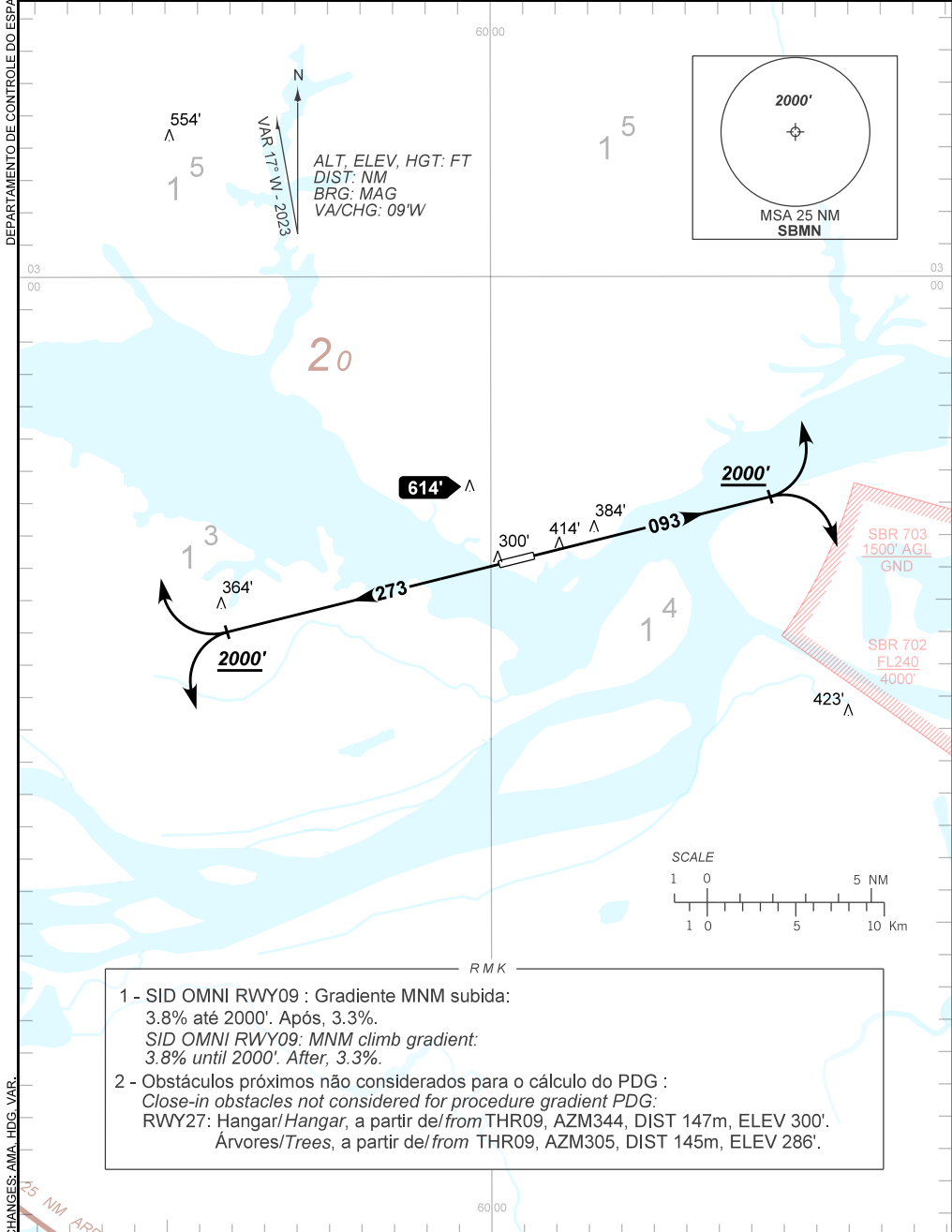
MANAUS / Ponta Pelada, MIL (SBMN)

RWY 09/27

OMNI

AD ELEV: 257'

TA 4000'	ATIS NIL	APP MANAUS 119.25 119.70 120.40	TWR PONTA PELADA 118.60
----------	-------------	------------------------------------	----------------------------



1 - SID OMNI RWY09 : Gradiente MNM subida:
3.8% até 2000'. Após, 3.3%.
SID OMNI RWY09: MNM climb gradient:
3.8% until 2000'. After, 3.3%.

2 - Obstáculos próximos não considerados para o cálculo do PDG :
Close-in obstacles not considered for procedure gradient PDG:
RWY27: Hangar/Hangar, a partir de/from THR09, AZM344, DIST 147m, ELEV 300'.
Árvores/Trees, a partir de/from THR09, AZM305, DIST 145m, ELEV 286'.

CHANGES: AMA, HDG, VAR.
25 NM ARR