

STANDARD ARRIVAL CHART
INSTRUMENT (STAR)

BRASÍLIA / Pres. Juscelino Kubitschek, INTL (SBBR)

RWY 29L / 29R

RNAV EVPUK 1B

AD ELEV: 3498'

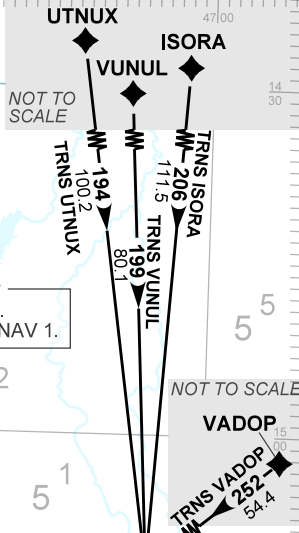
TA 7000'	D-ATIS 127.80	ACC BRASÍLIA 124.50 135.00	APP BRASÍLIA 119.50 120.00 120.30 129.60	TWR BRASÍLIA 118.10 118.45 118.75
----------	------------------	-------------------------------	--	--------------------------------------

DEPARTAMENTO DE CONTROLE DO ESPAÇO AÉREO

COMMUNICATION FAILURE
Acionar transponder A7600, completar a chegada até EDVIV e executar o procedimento em uso pelo ATC.
Set transponder A7600, complete arrival until EDVIV and execute the procedure in use by ATC.

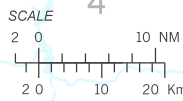
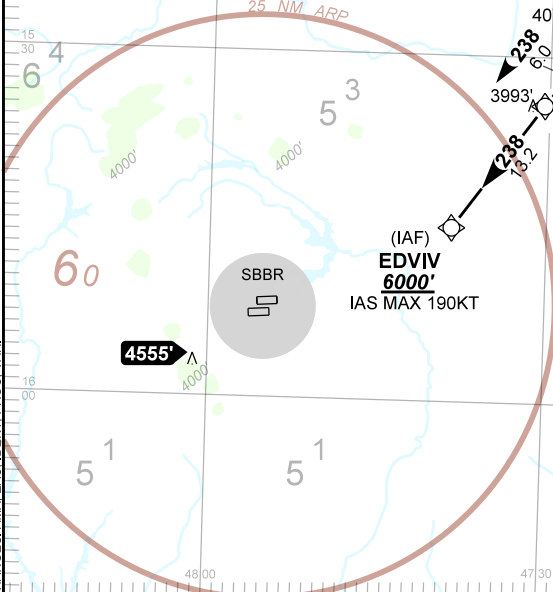
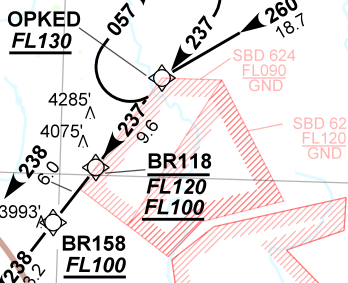
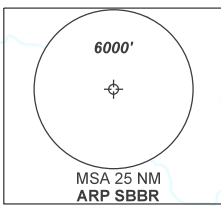
RMK
IAF MNM ALT poderá ser 7000' de acordo com o IAP em uso.
IAF MNM ALT may be 7000' according to the IAP in use.

NOTES
GNSS REQ.
RNP 1 or RNAV 1.



N
VAR 22° W - 2023

ALT, ELEV, HGT: FT
DIST: NM
BRG: MAG
VA/CHG: 06°W



CHANGES: AMA, EAC, IDENT, PROC, VAR.