

INSTRUMENT APPROACH CHART (IAC)

GAVIÃO PEIXOTO / EMBRAER - Unidade Gavião Peixoto (SBGP)

**USO EXCLUSIVO ENSAIO EM VOO
FLIGHT TEST ONLY**

RNP Y RWY 20 (AR)

AD ELEV: 1998'

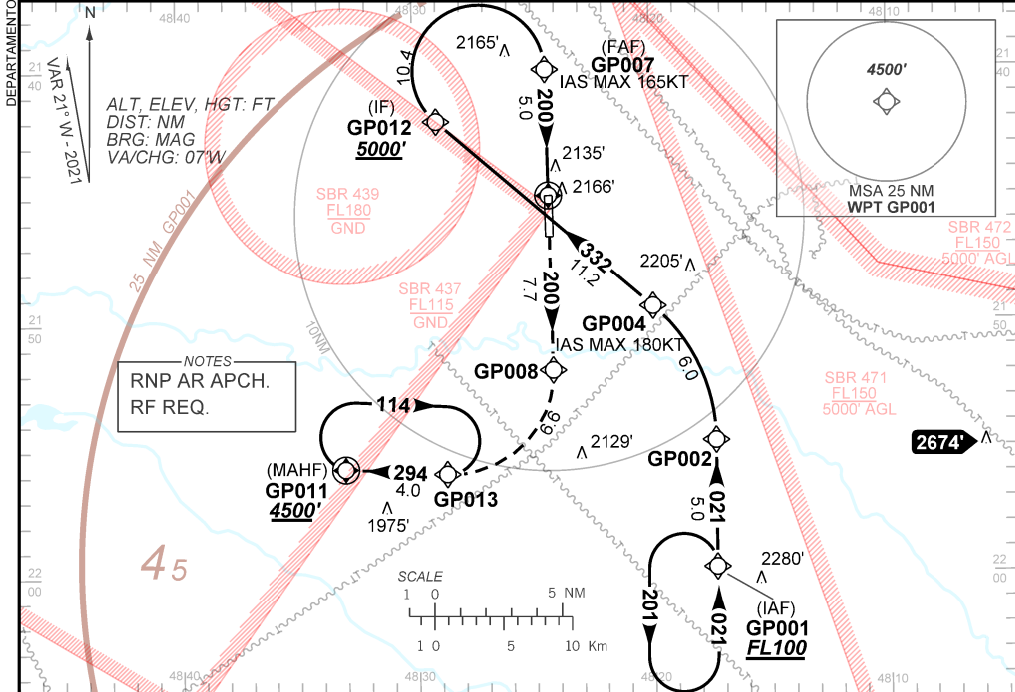
| | | |
|-------------|------------|-----------------------|
| ATIS NIL | APP NIL | AFIS GAVIÃO 118.95 |
|-------------|------------|-----------------------|

| | | | | |
|---|--------------------------|----------------------|--|-----|
| TEMP LNAV/VNAV MIN 0°C / MAX 45°C | FINAL CRS 200° | FAF: 3640' | RNP 0.3 DA / (OCH): 2327' / (330') | N/A |
|---|--------------------------|----------------------|--|-----|

APCH Perdida: Subir para **4500'**. Manter rumo **200°** até GP008. Curvar à DIREITA até GP013. Manter rumo **294°** para espera em GP011.

Missed APCH: Climb to **4500'**. Mantain course **200°** until GP008. Turn RIGHT until GP013. Mantain course **294°** for holding GP011.

RMK: Procedimento de uso exclusivo da EMBRAER para ensaio em voo. Compulsório voo diurno sob VFR.
Procedure of exclusive use by EMBRAER for flight test. Compulsory daylight flight under VFR.



| | | | | | | | |
|----------|------|------|------|------|-------|----------|----------|
| RWY20 | 0.9 | 2.0 | 3.0 | 4.0 | GP007 | IF GP012 | TA 5000' |
| ALT | 2327 | 2683 | 3003 | 3320 | 3640 | | |
| (HGT) | 330 | 686 | 1006 | 1323 | 1642 | | |
| FAF-MAPT | NIL | | | | | | |

| | | | | | | | |
|----------|------|------|------|------|-------|----------|----------|
| RWY20 | 0.9 | 2.0 | 3.0 | 4.0 | GP007 | IF GP012 | TA 5000' |
| ALT | 2327 | 2683 | 3003 | 3320 | 3640 | | |
| (HGT) | 330 | 686 | 1006 | 1323 | 1642 | | |
| FAF-MAPT | NIL | | | | | | |

| | | | | | | |
|-------------|-------------------------|------------------|---|---|---|---|
| STRAIGHT-IN | CAT | A | B | C | D | E |
| | DA / (OCH) | 2327' / (330') | | | | |
| RNP 0.3 | ALS/NO ALS/ RVR ALS (m) | NIL / 1600 / NIL | | | | |

AUTORIZAÇÃO ESPECIAL PARA AERONAVE E TRIPULAÇÃO REQUERIDA
SPECIAL AUTHORIZATION FOR AIRCRAFT AND CREW REQUIRED

Aprovação Específica
(ANAC IS 91.001)
Especific Approval
(ANAC IS 91.001)