

STANDARD DEPARTURE CHART
INSTRUMENT (SID)

BRASÍLIA / Pres. Juscelino Kubitschek, INTL (SBBR)

RWY 11L

AD ELEV: 3498'

RNAV PAPID 2A

TA 7000'	D-ATIS 127.80	TWR BRASÍLIA 118.10 118.45 118.75	APP BRASÍLIA 129.15 129.60 119.50	ACC BRASÍLIA 123.75 124.70 125.05 133.05
----------	------------------	--------------------------------------	--------------------------------------	---

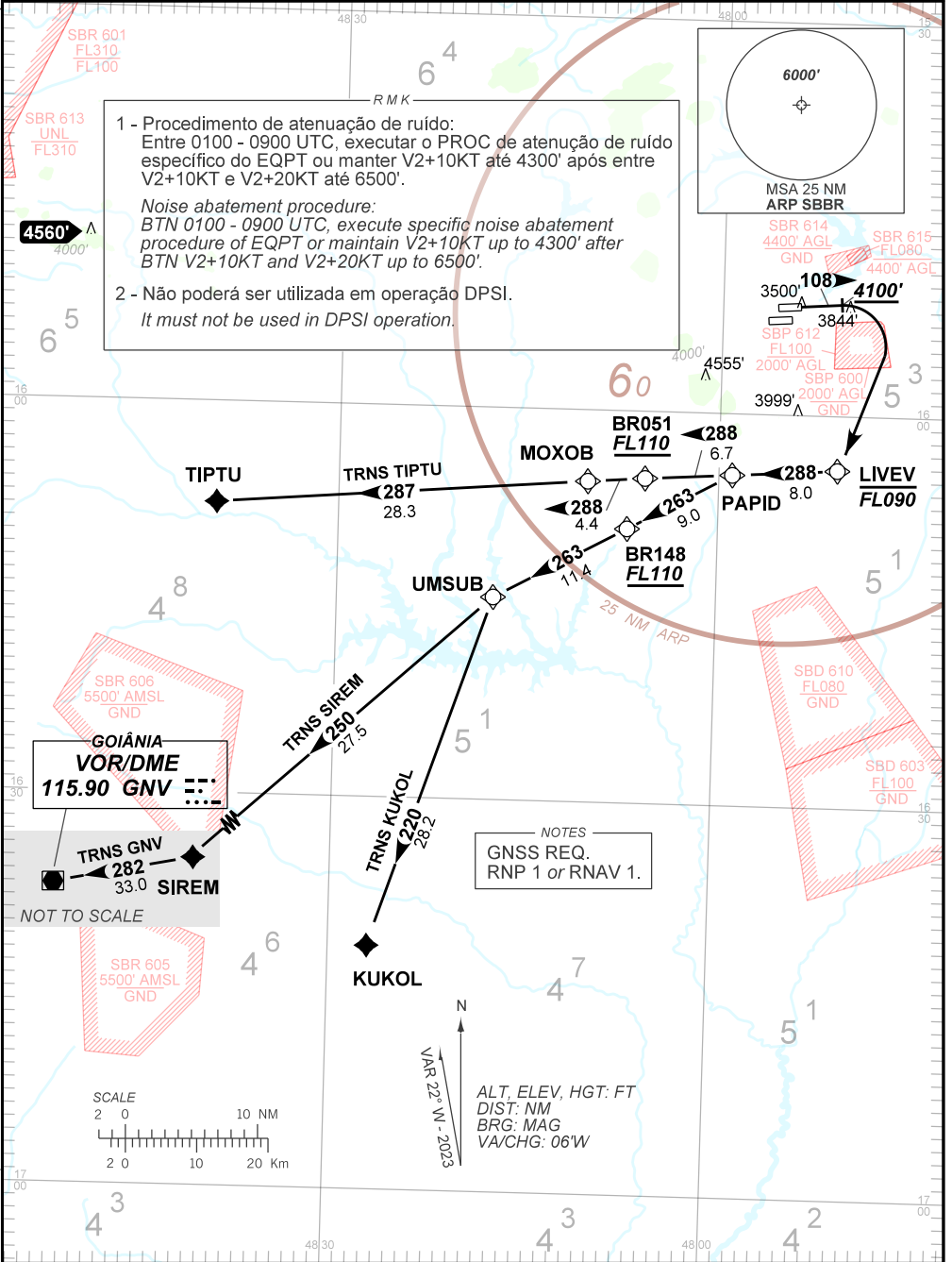
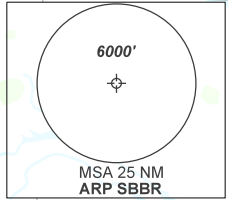
DEPARTAMENTO DE CONTROLE DO ESPAÇO AÉREO

CHANGES: EAC, RMK.

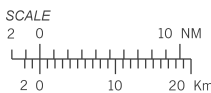
1 - Procedimento de atenuação de ruído:
Entre 0100 - 0900 UTC, executar o PROC de atenuação de ruído específico do EQPT ou manter V2+10KT até 4300' após entre V2+10KT e V2+20KT até 6500'.

*Noise abatement procedure:
BTN 0100 - 0900 UTC, execute specific noise abatement procedure of EQPT or maintain V2+10KT up to 4300' after BTN V2+10KT and V2+20KT up to 6500'.*

2 - Não poderá ser utilizada em operação DPSI.
It must not be used in DPSI operation.



NOTES
GNSS REQ.
RNP 1 or RNAV 1.



ALT, ELEV, HGT: FT
DIST: NM
BRG: MAG
VA/CHG: 06'W

VAR 22° W - 2023