

**INSTRUMENT APPROACH  
CHART (IAC)**

**ANÁPOLIS / Campo Marechal Márcio de Souza e Mello, MIL (SBAN)**

**USO EXCLUSIVO ACFT MILITARES  
MILITARY ACFT ONLY**

**PAR RWY 06L**

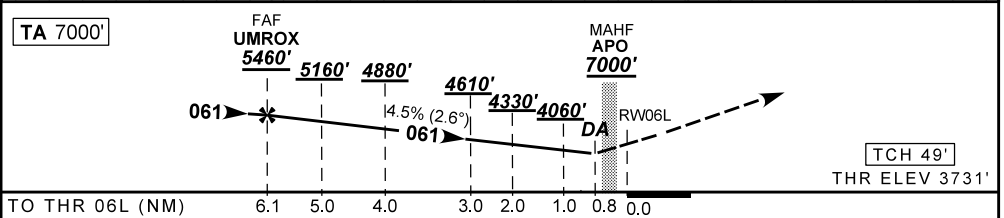
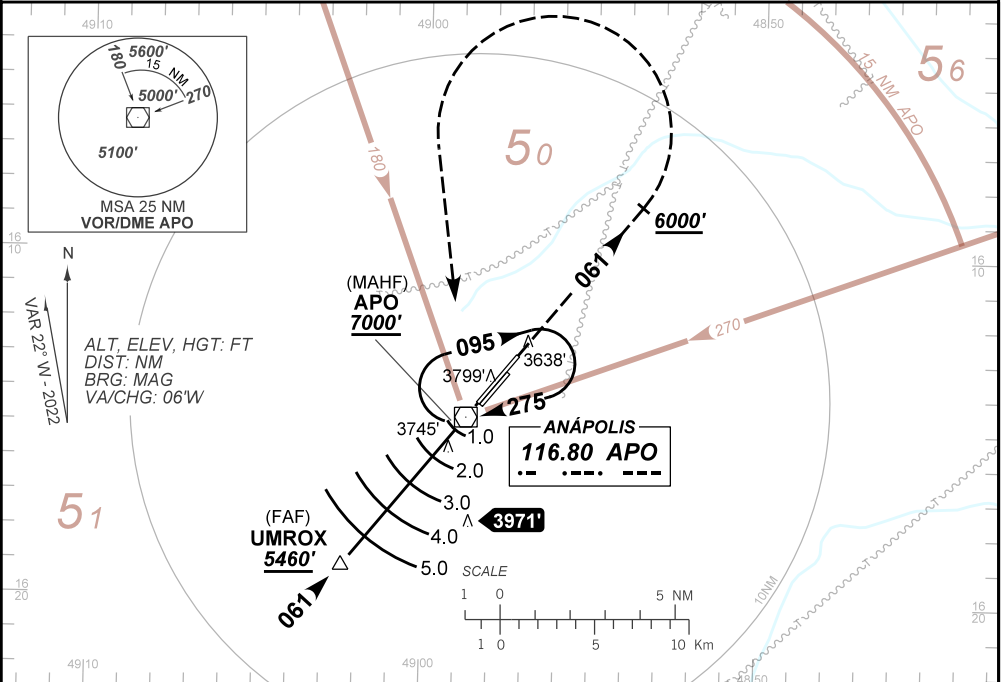
**AD ELEV: 3732'**

|             |  |                        |                                   |                         |
|-------------|--|------------------------|-----------------------------------|-------------------------|
| ATIS<br>NIL | APP ANAPOLIS<br>119.15 120.55 129.45<br>133.00 | PAR ANAPOLIS<br>134.80 | TWR ANAPOLIS<br>118.30 121.25     | GNDC ANAPOLIS<br>121.90 |
| N/A         | FINAL CRS<br>061°                              | FAF:<br>5460'          | PAR<br>DA / (OCH): 3989' / (258') | N/A                     |

APCH Perdida: Subir para **7000'**. Manter rumo **061** até **6000'**. Após, curvar à ESQUERDA direto VOR APO para espera.

Missed APCH: Climb to **7000'**. Maintain course **061** until **6000'**. After, turn LEFT direct APO VOR for holding.

DEPARTAMENTO DE CONTROLE DO ESPAÇO AÉREO



|     |       |          |     |     |     |     |     |     |
|-----|-------|----------|-----|-----|-----|-----|-----|-----|
| NIL | RW06L | KT       | 090 | 110 | 130 | 150 | 170 | 190 |
| NIL | ALT   | FPM      | 400 | 500 | 600 | 700 | 800 | 900 |
| NIL | (HGT) | FAF-MAPT | NA  |     |     |     |     |     |

| STRAIGHT-IN | CAT                     | A                | B | C | D | E |
|-------------|-------------------------|------------------|---|---|---|---|
| PAR         | DA / (OCH)              | 3989' / (258')   |   |   |   |   |
|             | ALS/NO ALS/ RVR ALS (m) | NIL / 1300 / NIL |   |   |   |   |
| CIRCLING    | MDA / (OCH)             | NA               |   |   |   |   |
|             | VIS (m)                 | NA               |   |   |   |   |

CHANGES: NOTES, VAR, HDG.