

CARTA DE APROXIMAÇÃO
POR INSTRUMENTOS (IAC)
INSTRUMENT APPROACH CHART (IAC)

BELO HORIZONTE / Tancredo Neves, INTL (SBCF)

ILS W ou/ou LOC W RWY 16

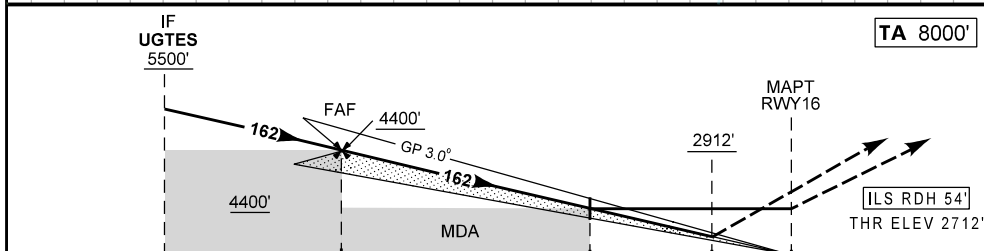
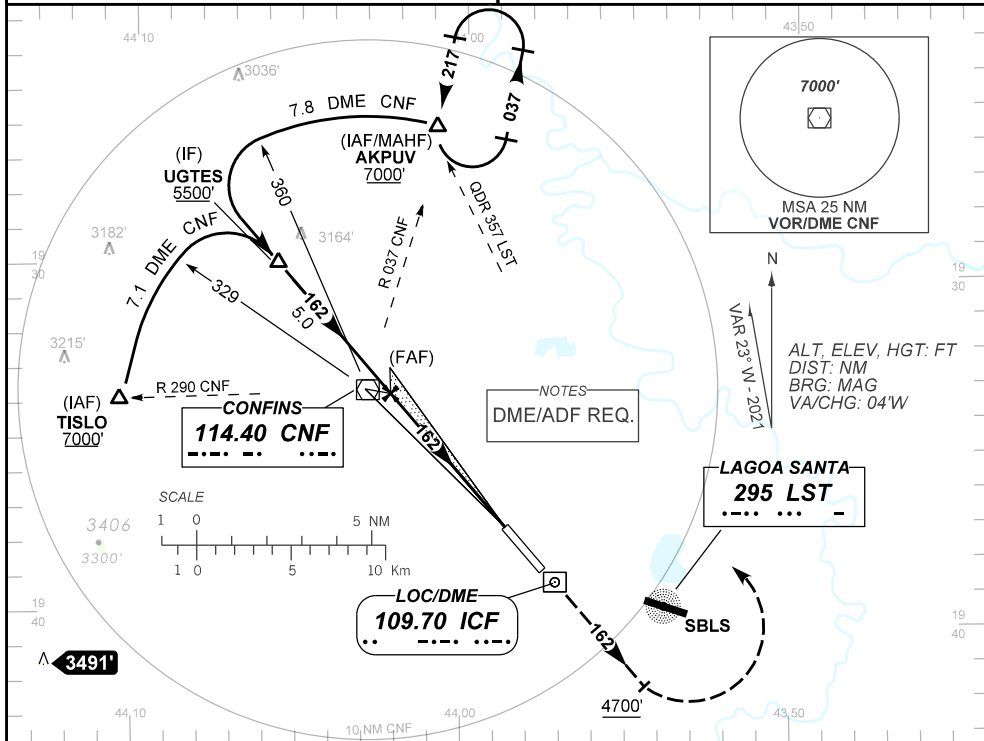
AD ELEV: 2721'	D-ATIS 127.85	APP BELO HORIZONTE 119.10 119.30 119.65 120.20 128.55 129.10 129.40	TWR CONFINES 118.20	GND C CONFINES 121.90
----------------	------------------	------------------------------------------------------------------------	------------------------	--------------------------

RMK: 1) (*) VIS RVR ALS 550m para aproximação utilizando Diretor de Voo, Piloto Automático ou Head-Up Display (HUD).
2) Proibido iniciar aproximação perdida antes do MAPT.

Aproximação Perdida: Subir para 7000'. Manter o rumo 162 até 4700'. Curvar à ESQUERDA direto NDB Lagoa Santa. Curvar à DIREITA QDR 357 LST para espera em AKPUV.

RMK: 1) (*) VIS RVR ALS 550m for approach using a Flight Director, Autopilot, or Head-Up Display (HUD).
2) Prohibited starting missed approach before MAPT.

Missed Approach: Climb to 7000'. Maintain course 162 until 4700'. Turn LEFT direct Lagoa Santa NDB. Turn RIGHT LST 357 QDR for holding at AKPUV.



TO THR 16 (NM)	10.0	5.0	1.5	0.5	0.0
TO ICF (DME)	12.1	7.1	3.6	2.6	2.1

ICF01	4.0	3.0	2.0	1.0	0.5	RWY 16	KT	090	110	130	150	170	190
4400	4040	3721	3403	3084	2912	ALT	FPM	500	600	700	800	900	1000
1688	1328	1009	691	372	200	(HGT)	FAF-MAPT 5.1NM	NIL					

POUSO DIRETO STRAIGHT-IN	CAT	A	B	C	D	E
	DA / OCH	2912 / 200				
CAT I	ALS/NO ALS/RVR ALS (m)	800 / 1200 / 700 (*)				
	MDA / OCH	3230 / 520				
LOC	ALS/NO ALS/RVR ALS (m)	800 / 1600 / NIL		1600 / 2400 / NIL		
	MDA / OCH	NA				
CIRCULAR TO CIRCLE	MDA / OCH	NA				
	VIS (m)	NA				