

**INSTRUMENT APPROACH  
CHART (IAC)**

**SANTA MARIA / Santa Maria (SBSM)**

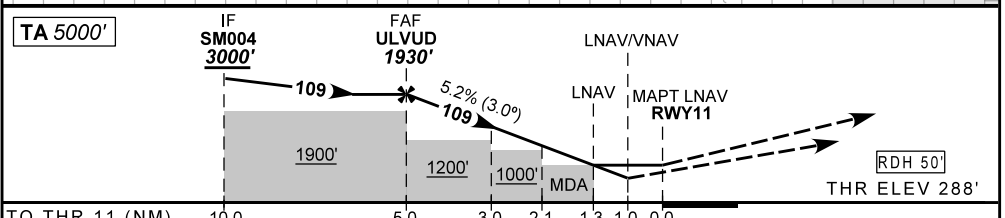
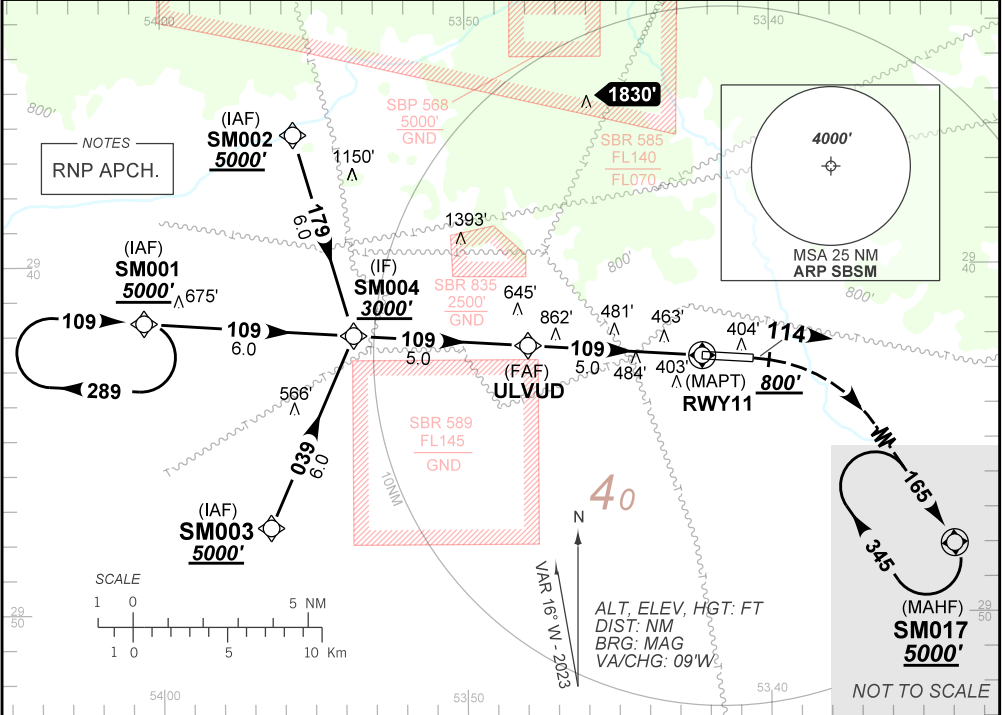
**RNP RWY 11**

**AD ELEV: 289'**

ATIS <b>127.75</b>	APP SANTA MARIA <b>119.35 121.35</b>	TWR SANTA MARIA <b>118.30 118.85</b>	AFIS SANTA MARIA <b>119.35 121.35 118.30</b>	GNDC <b>NIL</b>
TEMP LNAV/VNAV <b>MIN -20°C / MAX 50°C</b>	FINAL CRS <b>109°</b>	FAF: <b>1930'</b>	LNAV / VNAV DA / (OCH): <b>642' / (354')</b>	LNAV MDA / (OCH): <b>730' / (450')</b>

APCH Perdida: Subir para **5000'**. Manter rumo **114** até **800'**. Após, curvar à DIREITA direto SM017 para espera.  
Missed APCH: Climb to **5000'**. Maintain course **114** until **800'**. Then, turn RIGHT direct SM017 for holding.

DEPARTAMENTO DE CONTROLE DO ESPAÇO AEREO



	ULVUD	4.0	3.0	2.1	1.3	RWY11	Ground Speed (KT)	090	110	130	150	170	190
	1930	1612	1293	1007	730	ALT	FPM	500	600	700	800	900	NA
	1642	1324	1005	719	450	(HGT)	FAF-MAPT				NA		

STRAIGHT-IN	CAT	A	B	C	D	E
	LNAV/VNAV	DA / (OCH) <b>642' / (354')</b>				NIL / 1600 / NIL
LNAV	ALS/NO ALS/ RVR ALS (m)	NIL / 1600 / NIL				
	MDA / (OCH)	730' / (450')				NIL / 2100 / NIL
CIRCLING	MDA / (OCH)	NA				
	VIS (m)					

CHANGES: EAC IDENT