

STANDARD DEPARTURE CHART
INSTRUMENT (SID)

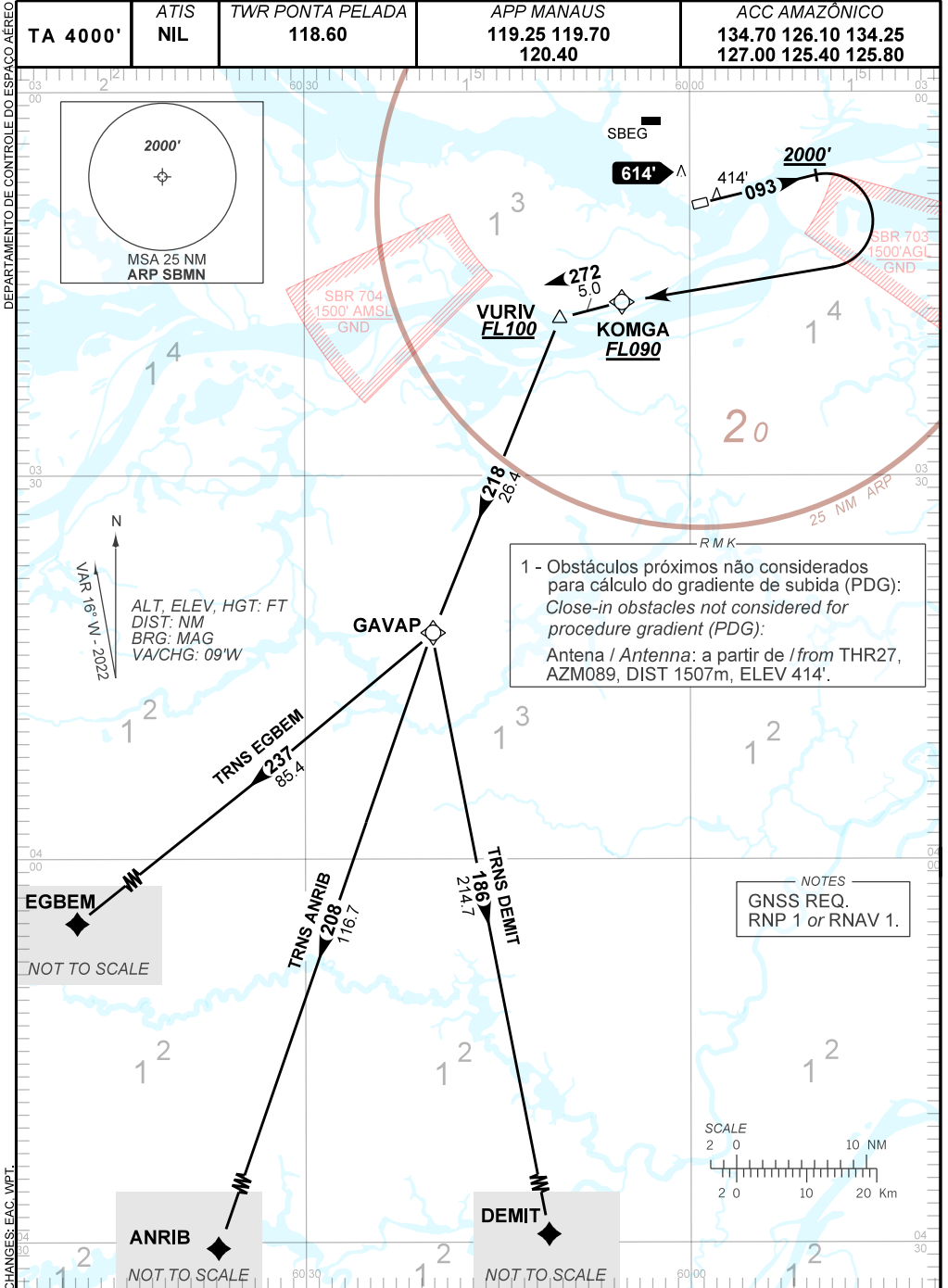
MANAUS / Ponta Pelada, MIL (SBMN)

RWY 09

AD ELEV: 257'

RNAV GAVAP 1A

TA 4000'	ATIS NIL	TWR PONTA PELADA 118.60	APP MANAUS 119.25 119.70 120.40	ACC AMAZÔNICO 134.70 126.10 134.25 127.00 125.40 125.80
----------	----------	----------------------------	---------------------------------------	---



CHANGES: EAC. WPT.

AIRAC AMDT 2413A1 26 DEC 24

SBMN_SID_00T 1/1
SID RNAV GAVAP 1A RWY 09