

**INSTRUMENT APPROACH
CHART (IAC)**

NAVEGANTES / Ministro Victor Konder, INTL (SBNF)

RNP Y RWY 26 (AR)

(CAT A,B,C)

AD ELEV: 18'

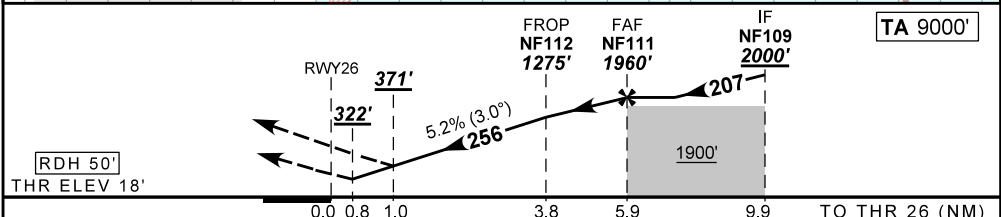
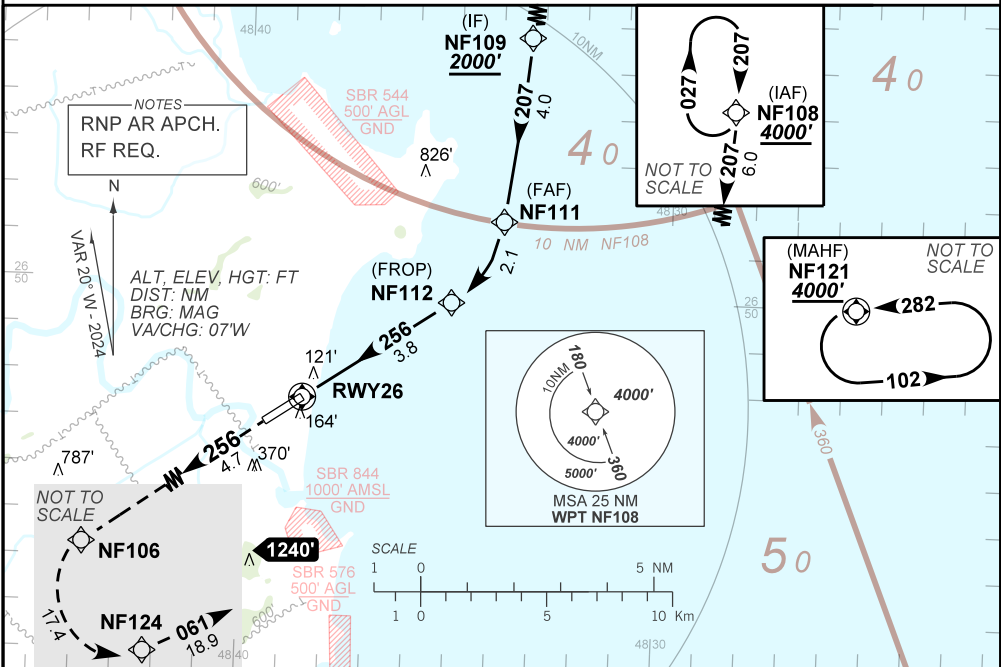
ATIS 127.625	APP FLORIANÓPOLIS 119.50 119.65 128.95 129.45 120.325	TWR NAVEGANTES 118.20	GNDC NIL
------------------------	---	---------------------------------	--------------------

TEMP LNAV/VNAV MIN 0°C / MAX 48°C	FINAL CRS 256°	FAF: 1960'	RNP 0.3 DA / (OCH): REFER TO MNM	N/A
---	--------------------------	----------------------	--	-----

APCH Perdida: Subir para **4000'** gradiente (*VER MNM). Manter o rumo **256** até NF106. Após, curvar à ESQUERDA até NF124. Após, rumo **061** até NF121 para espera.

Missed APCH: Climb to **4000'**, gradient (*REFER TO MNM). Maintain course **256** until NF106. After, turn LEFT until NF124. After, course **061** until NF121 for holding.

DEPARTAMENTO DE CONTROLE DO ESPAÇO AÉREO



RWY26	0.8	1.0	2.0	3.0	NF112	NF111	Ground Speed (KT)	090	110	130	150	170	190
ALT	322	371	705	1023	1275	1960	FPM	500	600	700	800	NA	
(HGT)	304	353	687	1005	1257	1942	FAF-MAPT	NA					

STRAIGHT-IN	CAT	A	B	C	D	E
RNP 0.3	DA / (OCH)	322' / (304')			NA	
Missed APCH Climb Gradient	3.5%	NIL / 1400' / NIL			NA	
RNP 0.3	DA / (OCH)	371' / (353')			NA	
	ALS/NO ALS/ RVR ALS (m)	NIL / 1600' / NIL			NA	

**AUTORIZAÇÃO ESPECIAL PARA AERONAVE E TRIPULAÇÃO REQUERIDA
SPECIAL AUTHORIZATION FOR AIRCRAFT AND CREW REQUIRED**

CHANGES: HTG: IAF, MISSED APCH.