

DEPARTURE CHART  
INSTRUMENT (SID)

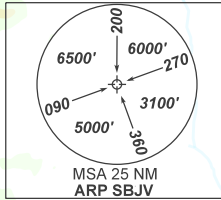
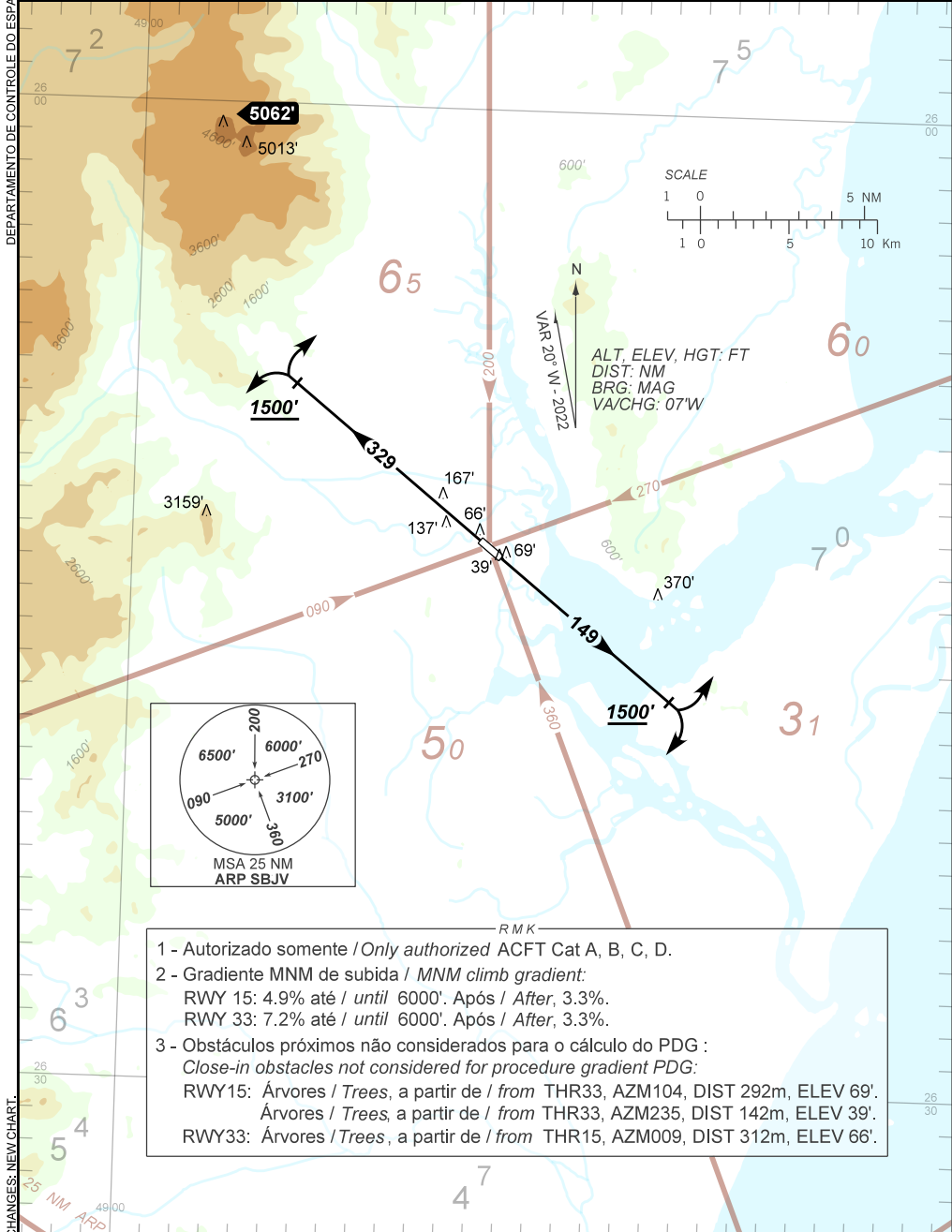
JOINVILLE / Lauro Carneiro de Loyola (SBJV)

RWY 15 / 33

AD ELEV: 15'

OMNI

TA 9000'	ATIS 127.85	TWR JOINVILLE 118.00	APP CURITIBA 119.95 119.70 120.65 120.95 129.55 133.15	ACC CURITIBA 124.40 125.40 125.80 126.50 126.10 127.50 128.45 135.85
----------	-------------	----------------------	--	--



- RMK
- 1 - Autorizado somente / Only authorized ACFT Cat A, B, C, D.
  - 2 - Gradiente MNM de subida / MNM climb gradient:  
RWY 15: 4.9% até / until 6000'. Após / After, 3.3%.  
RWY 33: 7.2% até / until 6000'. Após / After, 3.3%.
  - 3 - Obstáculos próximos não considerados para o cálculo do PDG :  
Close-in obstacles not considered for procedure gradient PDG :  
RWY15: Árvores / Trees, a partir de / from THR33, AZM104, DIST 292m, ELEV 69'.  
Árvores / Trees, a partir de / from THR33, AZM235, DIST 142m, ELEV 39'.  
RWY33: Árvores / Trees, a partir de / from THR15, AZM009, DIST 312m, ELEV 66'.

CHANGES: NEW CHART.