

AD ELEV: 1785'

**RNAV(GNSS) RWY 07**

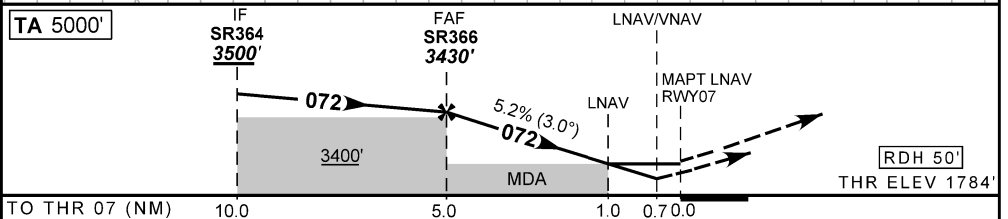
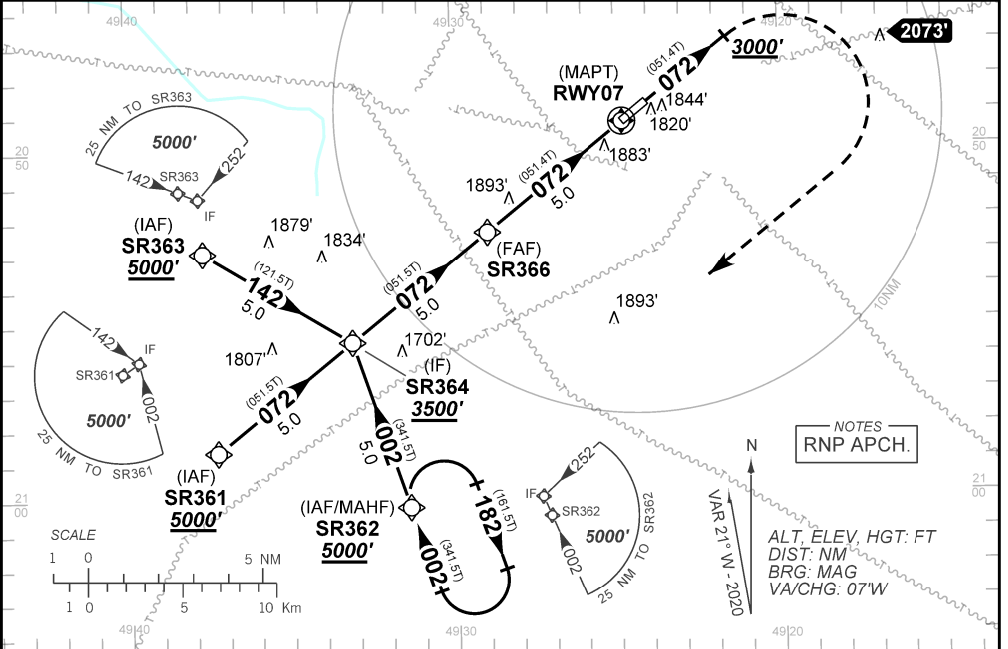
ATIS NIL	APP NIL	AFIS RIO PRETO 130.85	GNDC NIL
N/A	FINAL CRS 072°	FAF: 3430'	LNAV/VNAV DA / (OCH): 2044' / (260')
			LNAV MDA / (OCH): 2140' / (360')

APCH Perdida: Subir para **5000'**. Manter o proa **072** até **3000'**. Após, curvar à DIREITA direto SR362 para espera.

Missed APCH: Climb to **5000'**. Maintain heading **072** until **3000'**. After, turn RIGHT direct to SR362 for holding

RMK: Para sistemas não compensados BARO-VNAV, LNAV/VNAV NÃO AUTORIZADO abaixo de 0°C ou acima de 50°C.

For uncompensated systems BARO-VNAV, LNAV/VNAV NOT AUTHORIZED below 0°C or above 50°C.



	SR366	4.0	3.0	2.0	1.0	RWY07		KT	090	110	130	150	170	190
		3430	3111	2793	2475	2140	ALT	FPM	500	600	700	800	900	1000
		1646	1327	1009	691	360	(HGT)	FAF-MAPT				NA		

STRAIGHT-IN	CAT	A	B	C	D	E
LNAV/VNAV	DA / (OCH)	2044' / (260')				NA
	ALS/NO ALS/ RVR ALS (m)	NIL / 1600 / NIL				
LNAV	MDA / (OCH)	2140' / (360')				
	ALS/NO ALS/ RVR ALS (m)	NIL / 1600 / NIL				
CIRCLING	MDA / (OCH)	NA				
	VIS (m)					

CHANGES: WPT