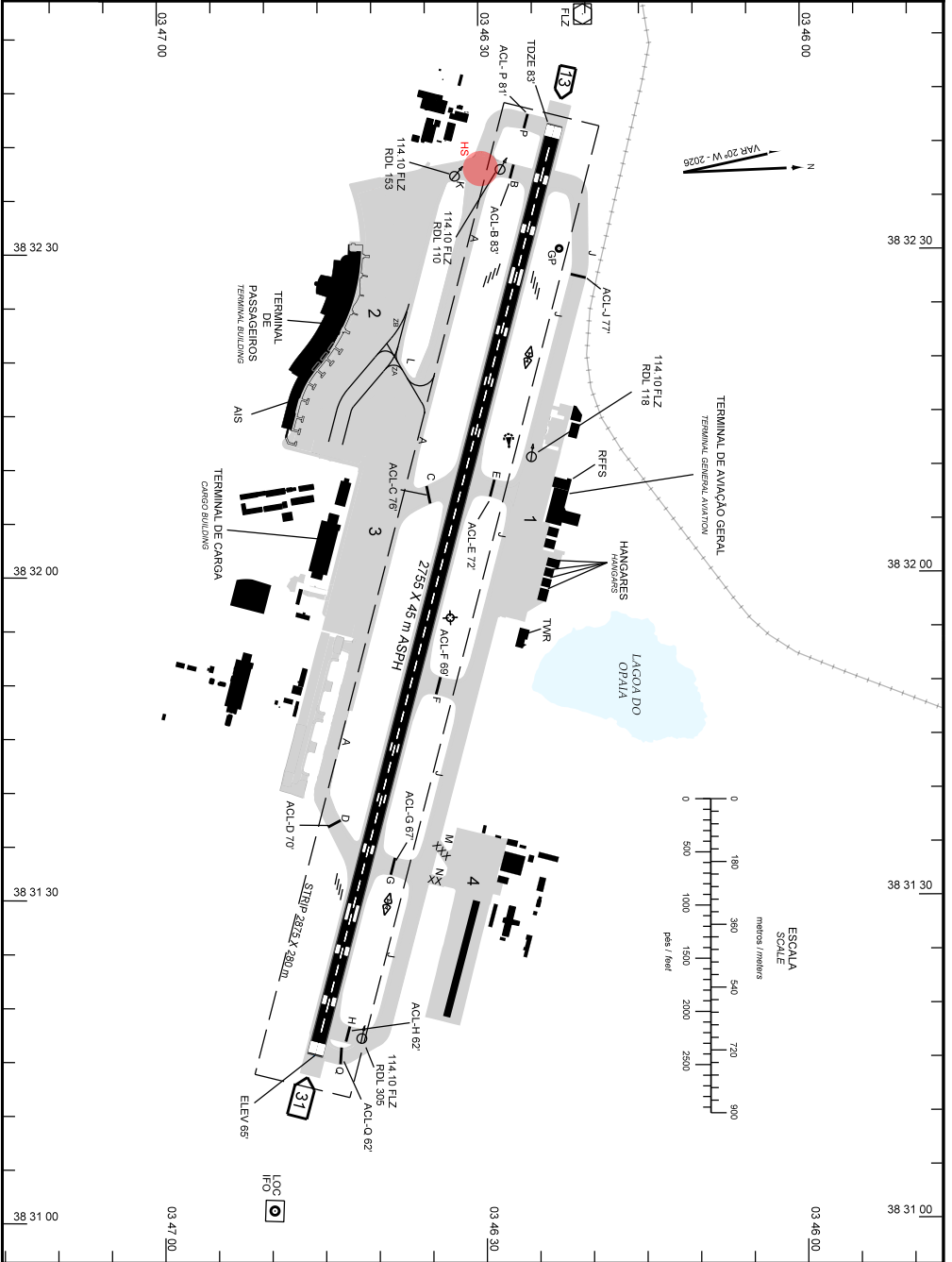


AD ELEV: 83'

ARP S03 46 33 W038 31 56

D-ATIS 127.70	DCI	GNDC 121.95	TWR 129.00 121.50	APRON NIL
------------------	-----	----------------	----------------------	--------------



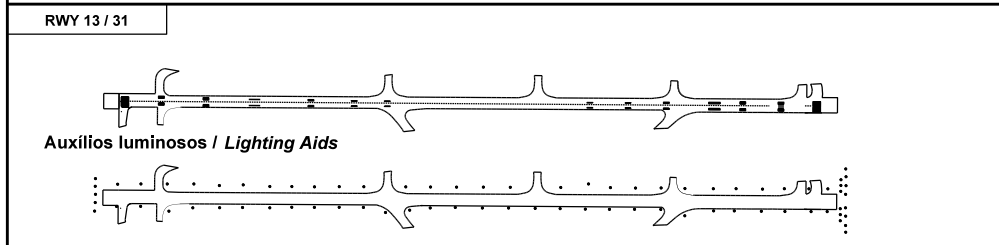
CHANGES: MET.

**ADC - SBFZ: INFORMAÇÕES COMPLEMENTARES / COMPLEMENTARY INFORMATION**

CARACTERÍSTICAS FÍSICAS / PHYSICAL CHARACTERISTICS											
PISTA RUNWAY				DIMENSÕES(m) DIMENSIONS(m)				PCN	TIPO DE SUPERFÍCIE SURFACE KIND		
RWY	BRG MAG	Tipo Type	RCD	RWY	SWY	CWY	STRIP	RWY	RWY	SWY	
a	b	c	d	e	f	g	h	i	j	k	
13	126	PA-1	4E	2755x45			2875 x 280	66/F/A/X/T	ASPH		
31	306	NPA	4E								

DISTÂNCIAS DECLARADAS, AUXÍLIOS VISUAIS E COORDENADAS DAS CABECEIRAS DECLARED DISTANCES, VISUAL AIDS AND THRESHOLD COORDINATES							
RWY	TORA(m)	TODA(m)	ASDA(m)	LDA(m)	AUXÍLIOS / AIDS	ALTURA GEOIDAL(m) GEOID HEIGHT(m)	COORDENADAS COORDINATES
13	2755	2755	2755	2755	PAPI	- 8,62	S03 46 23 W038 32 42
31	2755	2755	2755	2755	PAPI(2.97°)	- 8,62	S03 46 46 W038 31 15

**SERVIÇO DE SALVAMENTO E CONTRAINCÊNDIO / RESCUE AND FIRE FIGHTING SERVICE: RFFS REQ - 9**



**RMK:**

- 1) MEHT: PAPI - RWY 13 - 66FT.  
RWY 31 - 61FT.
- 2) TWY JULIET BTN THR 13 E TWY GOLF PRB OPS DE ACFT COM ENVERGADURA SUPERIOR A 36M.  
TWY JULIET BTN THR 13 AND TWY GOLF PRB OPS OF ACFT WITH WINGSPAN GREAT THAN 36 M.

CHANGES: MET.