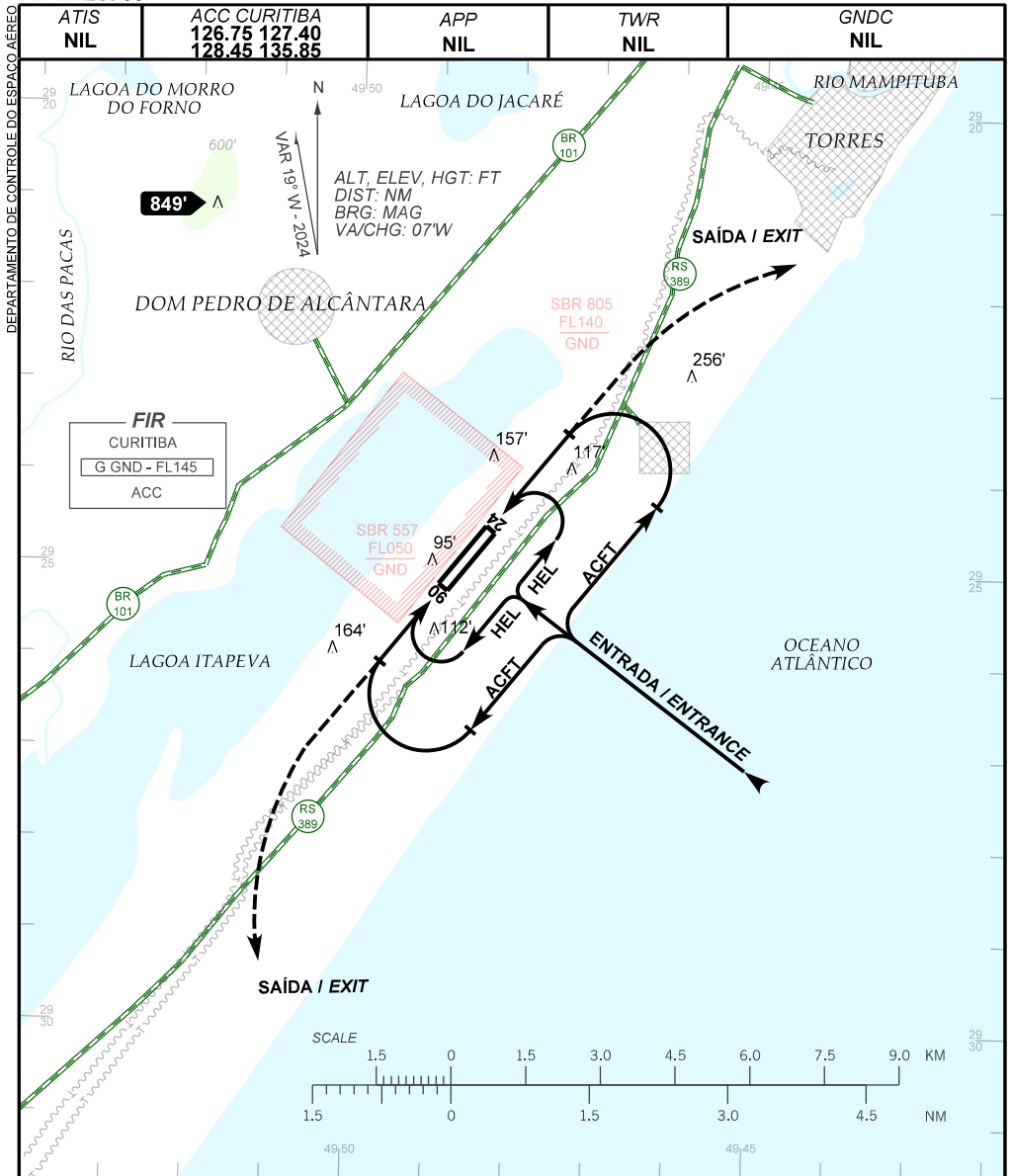


VISUAL APPROACH CHART
(VAC)

TORRES / Torres (SSTE)

AD ELEV: 30'

RWY 06 / 24



RMK:

- 1- ALTITUDES MÍNIMAS NO CIRCUITO DE TRÁFEGO:
MINIMUM ALTITUDES IN THE TRAFFIC CIRCUIT:
- 1.1- AERONAVES / AIRPLANES:
 - CAT A, B, C: 1200'
 - CAT D, E: 1600'
 - 1.2- HELICÓPTEROS / HELICOPTERS: 600'

CHANGES: EAC, FIR.