

INSTRUMENT APPROACH CHART (IAC)

CANOAS / Campo Nossa Senhora de Fátima, MIL (SBCO)

**USO EXCLUSIVO F-39
F-39 USE ONLY**

**NAV APV RWY 31
(ONLY CAT E)**

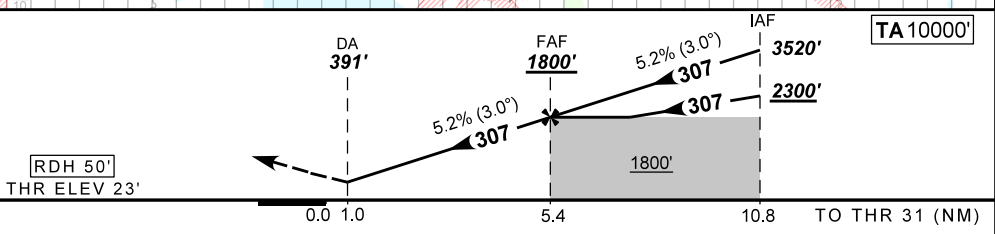
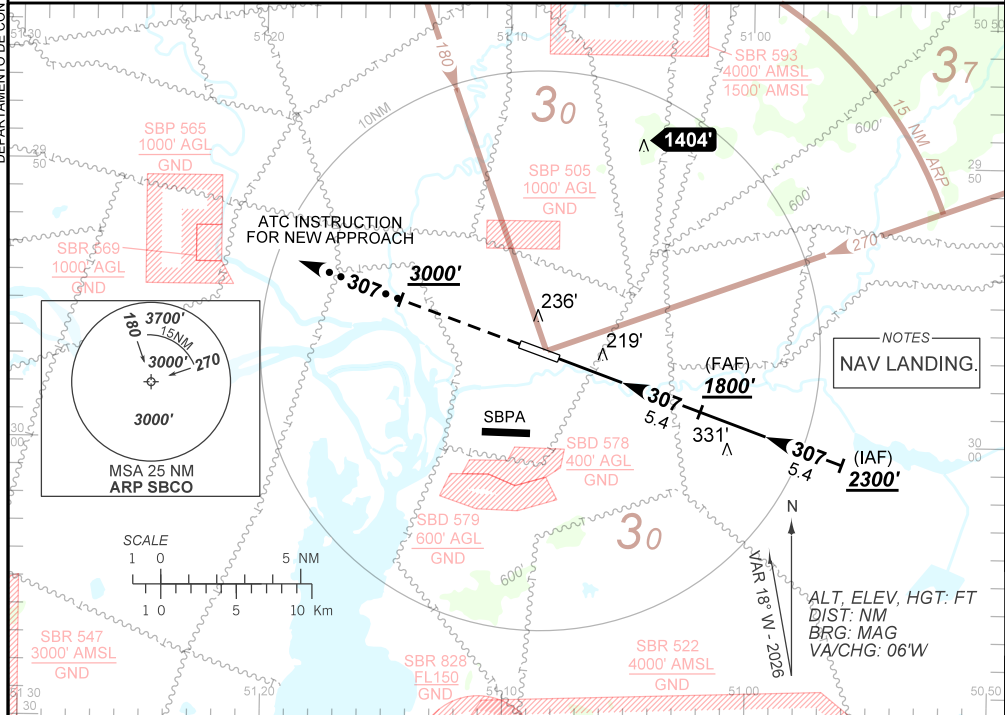
AD ELEV: 26'

ATIS NIL	APP PALEGRE 119.00 120.10 120.55 128.90	TWR CANOAS 118.50 122.80 (MIL)	GNDC CANOAS 121.70
-------------	--	-----------------------------------	-----------------------

TEMP LNAV/VNAV MIN -10°C / MAX 50°C	FINAL CRS 307°	FAF: 1800'	NAV APV DA / (OCH): 391' / (368')	N/A
--	-------------------	---------------	--------------------------------------	-----

APCH Perdida: Subir para **3000'** no rumo **307** e aguardar instruções ATC.
Missed APCH: Climb to **3000'** on course **307** and expect further ATC instructions.

DEPARTAMENTO DE CONTROLE DO ESPAÇO AÉREO



RWY31	1.0	2.0	3.0	4.0	FAF	Ground Speed (KT)	090	110	130	150	170	190
ALT	391	710	1028	1347	1800	FPM	500	600	700	800	900	1000
(HGT)	368	687	1005	1324	1777	FAF-MAPT	NIL					

STRAIGHT-IN	CAT	ONLY CAT E
	NAV APV	DA / (OCH) 391' / (368')
	ALS/NO ALS/ RVR ALS (m)	NIL / 1700 / NIL
		NA
CIRCLING	MDA / (OCH)	NA
	VIS (m)	

CHANGES: EAC, TA, VAR.

AIRAC AMDT 2604A1 16 APR 26
USO EXCLUSIVO F-39 / F-39 USE ONLY

SBCO_IAC_02T 1/1
IAC NAV APV RWY 31