

**INSTRUMENT APPROACH  
CHART (IAC)**

**BAGÉ / Comandante Gustavo Kraemer (SBBG)**

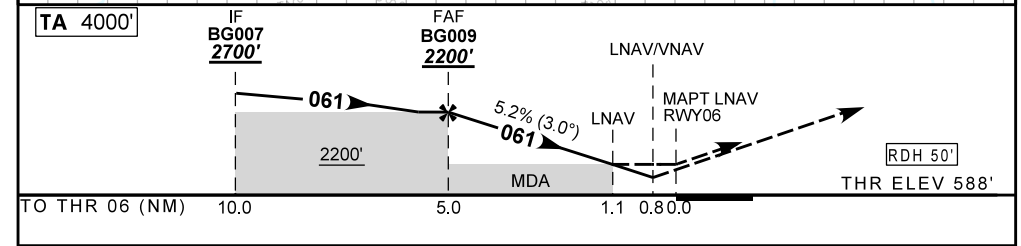
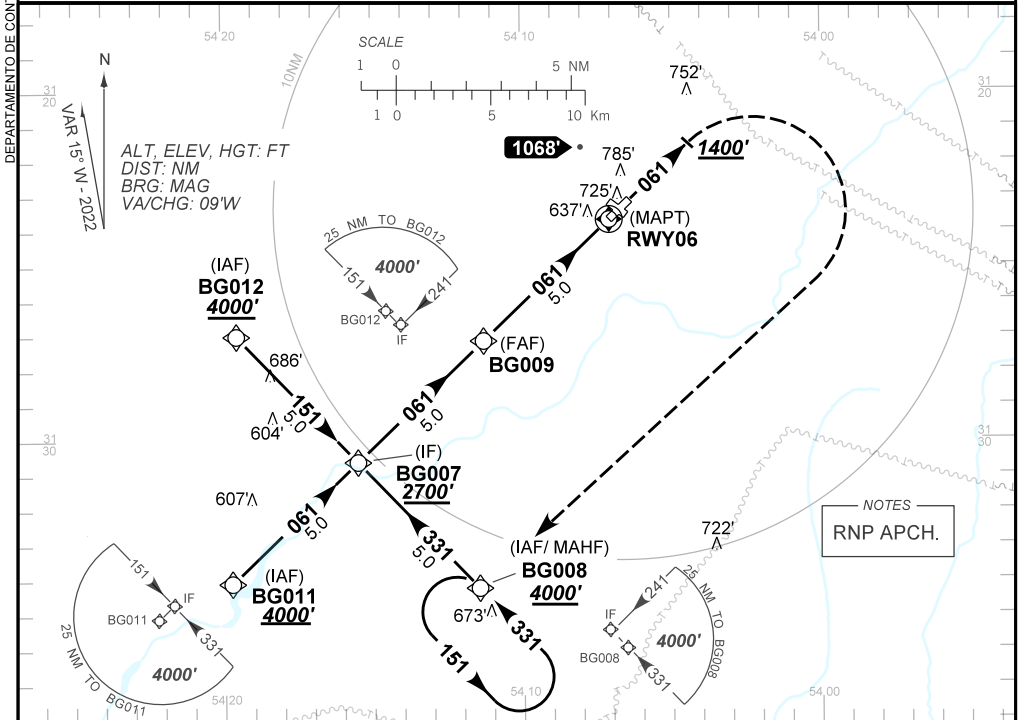
**RNP RWY 06**

**AD ELEV: 611'**

(CAT A, B, C)

ATIS NIL	ERAA 132.60	APP NIL	AFIS BAGÉ 125.85	GNDC NIL
TEMP LNAV/VNAV MIN -10°C / MAX 50°C	FINAL CRS 061°	FAF: 2200'	LNAV/VNAV DA / (OCH): 875' / (287')	LNAV MDA / (OCH): 990' / (410')

APCH Perdida: Subir para **4000'** no rumo **061**. Após **1400'**, curvar à DIREITA direto BG008 para espera.  
Missed APCH: Climb to **4000'** on course **061**. After **1400'**, turn RIGHT direct BG008 for holding.



TO THR 06 (NM)	10.0	5.0	1.1	0.8	0.0	
FAF	4.0	3.0	2.0	1.1	RWY06	
	1912	1593	1275	990	ALT	
	1612	1324	1005	687	410	
					(HGT)	
Ground Speed (KT)	090	110	130	150	170	190
FPM	500	600	700	800	NA	
FAF-MAPT	NIL					

STRAIGHT-IN	CAT	A	B	C	D	E
LNAV/VNAV	DA / (OCH)	875' / (287')			NA	
	ALS/NO ALS/ RVR ALS (m)	NIL / 1400 / NIL				
LNAV	MDA / (OCH)	990' / (410')				
	ALS/NO ALS/ RVR ALS (m)	NIL / 1600 / NIL		NIL / 1900 / NIL		
CIRCLING	MDA / (OCH)	NA				
	VIS (m)					

CHANGES: IDENT. PROC.

DEPARTAMENTO DE CONTROLE DO ESPAÇO AÉREO