

**INSTRUMENT APPROACH  
CHART (IAC)**

**LINHARES / Aeroporto LN013 Municipal de Linhares (SNLN)**

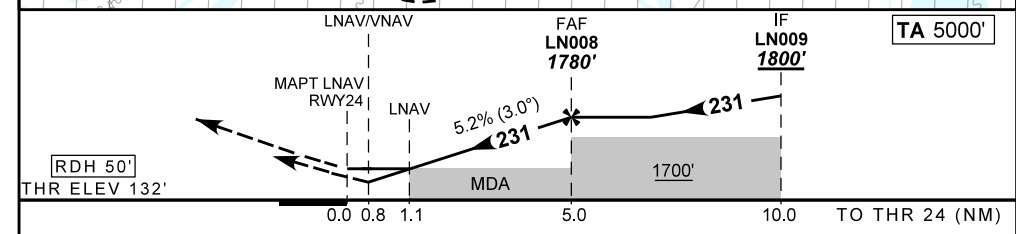
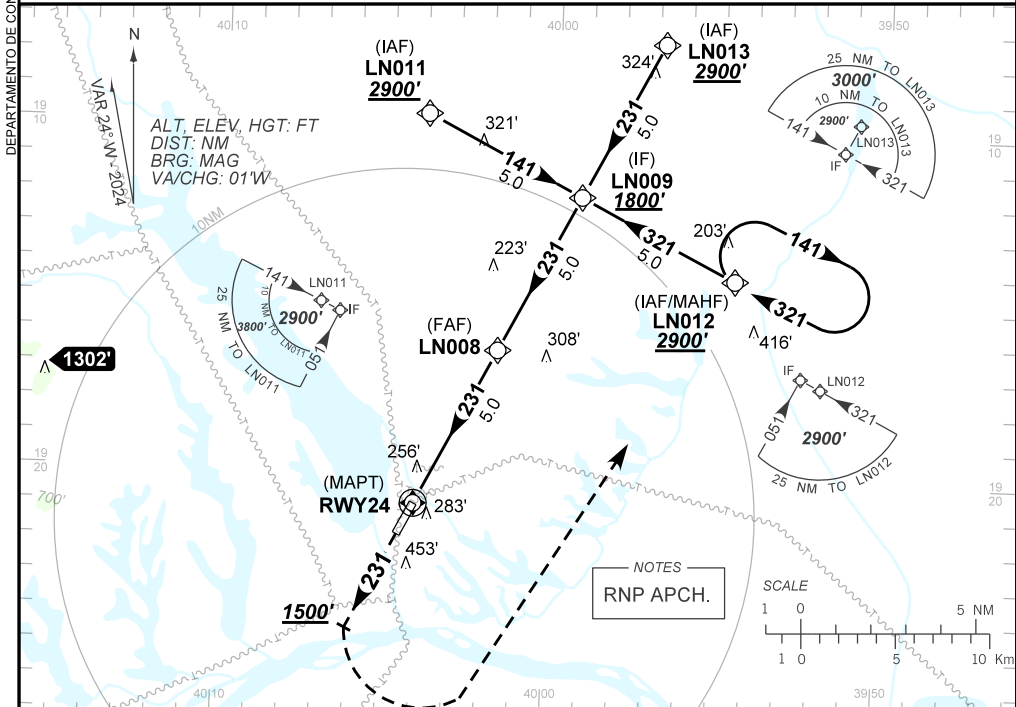
**AD ELEV: 138'**

**RNP RWY 24**

ATIS NIL	ERAA 127.80	APP NIL	TWR NIL	GNDC NIL
-------------	----------------	------------	------------	-------------

TEMP LNAV/VNAV <b>MIN -10°C / MAX 45°C</b>	FINAL CRS 231°	FAF: 1780'	LNAV/VNAV DA / (OCH): <b>435' / (303')</b>	LNAV MDA / (OCH): <b>520' / (390')</b>
---	-------------------	---------------	---	---

APCH Perdida: Subir para **2900'**. Manter proa **231** até **1500'**. Após, curvar à ESQUERDA direto LN012 para espera.  
Missed APCH: Climb to **2900'**. Maintain heading **231** until **1500'**. After, turn LEFT direct LN012 for holding.



RWY24	1.1	2.0	3.0	4.0	LN008		Ground Speed (KT)	090	110	130	150	170	190
ALT	520	819	1137	1456	1780		FPM	500	600	700	800	900	N/A
(HGT)	390	687	1005	1324	1642		FAF-MAPT	NIL					

STRAIGHT-IN	CAT	A	B	C	D	E	
	DA / (OCH)	435' / (303')					NA
LNAV/VNAV	ALS/NO ALS/ RVR ALS (m)	NIL / 1400 / NIL					
	MDA / (OCH)	520' / (390')					
LNAV	ALS/NO ALS/ RVR ALS (m)	NIL / 1600 / NIL			NIL / 1800 / NIL		
	MDA / (OCH)	NIL					
CIRCLING	MDA / (OCH)	NIL					
	VIS (m)	NIL					

CHANGES: NEW CHART.

DEPARTAMENTO DE CONTROLE DO ESPAÇO AÉREO