

**INSTRUMENT APPROACH
CHART (IAC)**

MACEIÓ / Zumbi dos Palmares, INTL (SBMO)

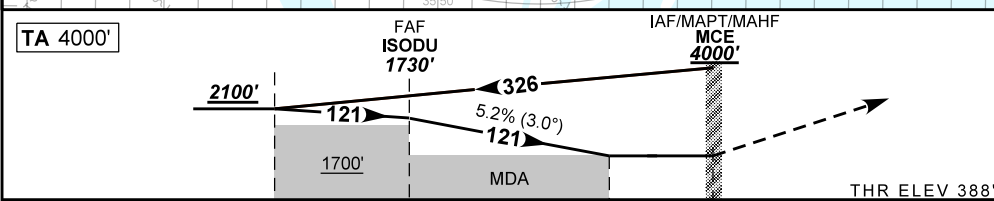
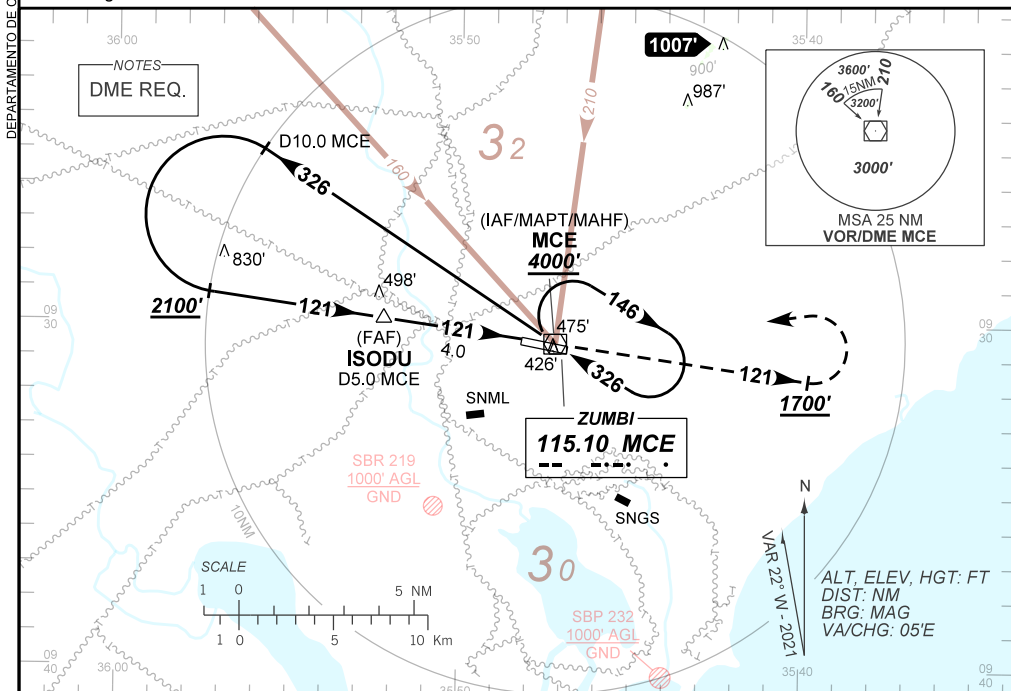
AD ELEV: 388'

VOR Z RWY 12

D-ATIS NIL	APP MACEIÓ 119.25 128.90	TWR MACEIÓ 118.00 118.25	GNDC NIL
VOR MCE 115.10 MHz	FINAL CRS 121°	FAF: 1730'	VOR MDA / (OCH): 740' / (360')
		N/A	

APCH Perdida: Subir para **4000'**. Manter RDL **121** do VOR MCE até **1700'**. Após, curvar à ESQUERDA direto VOR MCE para espera.

Missed APCH: Climb to **4000'**. Maintain **121** RDL MCE VOR until **1700'**. After, turn LEFT direct to MCE VOR for holding.



TO THR 12 (NM)	9.0	4.0	1.0	0.0
TO MCE (DME)	10.0	5.0	2.0	1.0

	ISODU	3.0	2.0	1.0	RWY 12	Ground Speed (KT)	090	110	130	150	170	190	
		1730	1393	1075	740	ALT	FPM	500	600	700	800	900	NA
		1342	1005	687	360	(HGT)	FAF-MAPT	NA					

STRAIGHT-IN	CAT	A	B	C	D	E
VOR	MDA / (OCH)	740' / (360')				
	ALS/NO ALS/ RVR ALS (m)	NIL / 1700' / NIL				
CIRCLING	MDA / (OCH)	NA				
	VIS (m)	NA				

CHANGES: FREQ, LAYOUT, MSA, PROC, VAR.