

**INSTRUMENT APPROACH
CHART (IAC)**

SALVADOR / Deputado Luís Eduardo Magalhães, INTL (SBSV)

RNP Z RWY 17

(CAT A, B, C)

AD ELEV: 66'

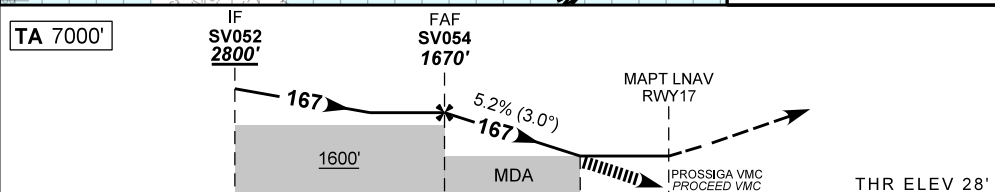
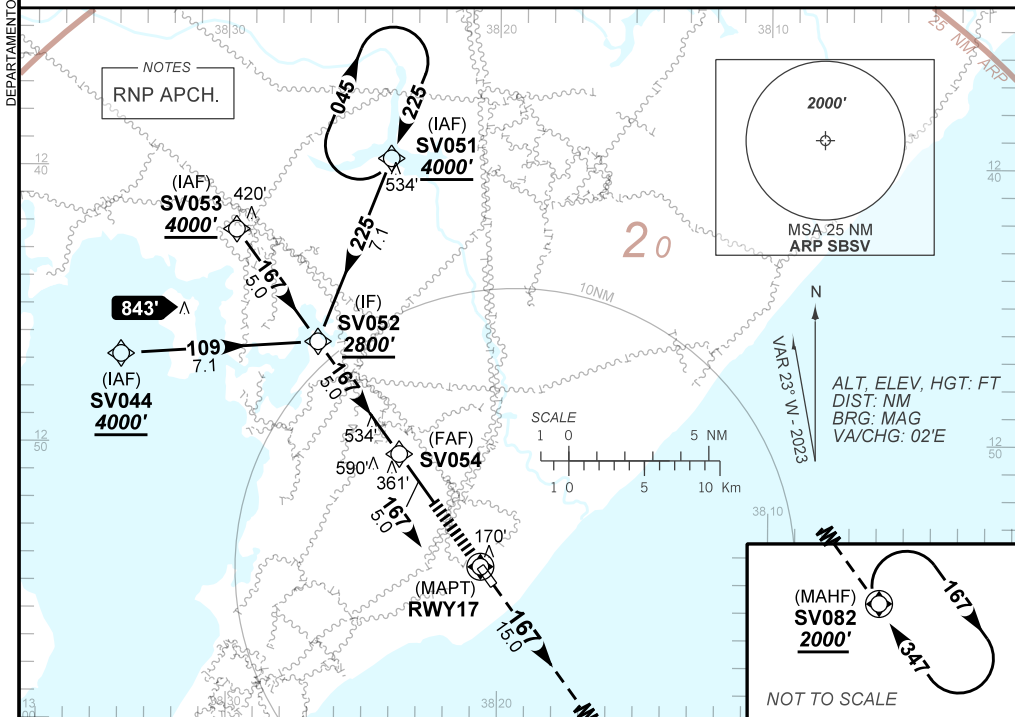
D-ATIS 127.775	APP SALVADOR 119.35 119.80 120.80 129.45		TWR SALVADOR 118.60 118.95 121.10	GNDC SALVADOR 121.90
N/A	FINAL CRS 167°	FAF: 1670'	N/A	LNAV MDA / (OCH): 1030' / (1010')

APCH Perdida: Subir para **2000'**. Manter rumo **167** até SV082 para espera.

Missed APCH: Climb to **2000'**. Maintain course **167** until SV082 for holding.

RMK: Proseguir VMC a partir de 3NM do MAPT ou efetuar aproximação perdida.

Proceed VMC at 3NM to MAPT or perform the Missed Approach.



TO THR 17 (NM)	10.0	5.0	3.0	0.0	THR ELEV 28'
----------------	------	-----	-----	-----	--------------

		SV054	4.0	3.0	RWY17	Ground Speed (KT)	090	110	130	150	170	190
		1670	1352	1030	ALT	FPM	500	600	700	800	NA	NA
		1642	1324	1010	(HGT)	FAF-MAPT	NA					

STRAIGHT-IN	CAT	A	B	C	D	E
LNAV	MDA / (OCH)	1030' / (1010')				NA
	ALS/NO ALS/ RVR ALS (m)	NIL / 5000 / NIL				
CIRCLING	MDA / (OCH)	NA				
	VIS (m)	NA				

CHANGES: FREC.