

**INSTRUMENT APPROACH  
CHART (IAC)**

**BRASÍLIA / Pres. Juscelino Kubitschek, INTL (SBBR)**

**RNP W RWY 29L (AR)**

**AD ELEV: 3498'**

D-ATIS <b>127.80</b>	APP BRASÍLIA <b>119.70 129.60 119.20 120.00</b>	TWR BRASÍLIA <b>118.10 118.45 118.75</b>	GNDC BRASÍLIA <b>121.80 121.95</b>
-------------------------	--	---	---------------------------------------

TEMP LNAV/VNAV <b>MIN 0°C / MAX 50°C</b>	FINAL CRS <b>288°</b>	FAF: <b>6000'</b>	RNP 0.24 DA / (OCH): <b>REFER TO MNM</b>	<b>N/A</b>
---	--------------------------	----------------------	---	------------

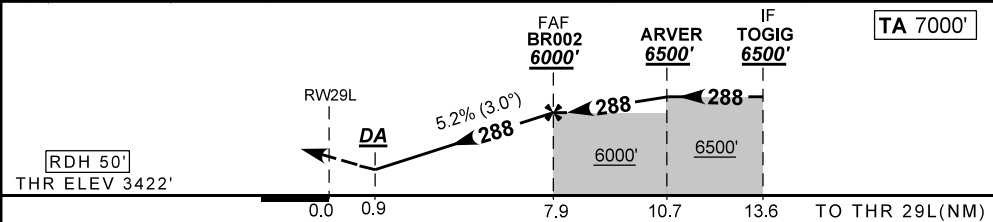
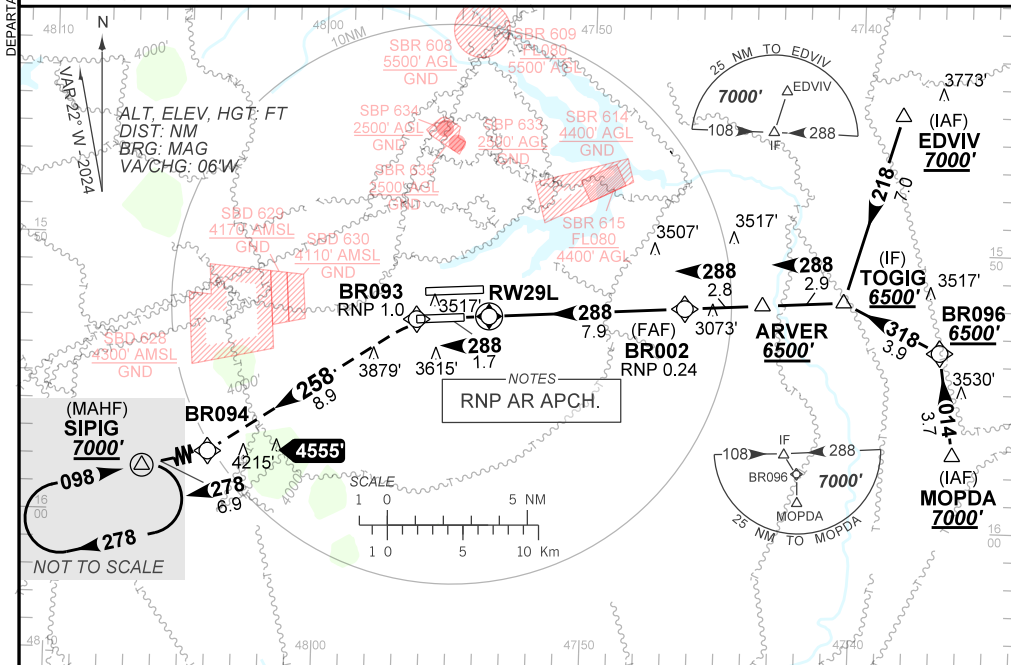
APCH Perdida: Subir para **7000'**. Manter rumo **288** até BR093. Após, curvar à ESQUERDA direto BR094. Após, curvar à DIREITA até SIPIG para espera.

Missed APCH: Climb to **7000'**. Maintain course **288** until BR093. After, turn LEFT direct BR094. After, turn RIGHT direct SIPIG for holding.

RMK: 1) Não efetuar transição para RNP da aproximação perdida antes de 0.9NM de RWY29L.

Do not transition to RNP from missed approach before 0.9NM from RWY29L.

2) Aproximações Paralelas Independentes / Independent Parallel Approaches.



RWY29L	0.9	2.0	3.0	4.0	5.0	BR002	Ground Speed (KT)	090	110	130	150	170	190
ALT	3759	4109	4427	4746	5064	6000	FPM	500	600	700	800	900	NA
(HGT)	337	687	1005	1324	1642	2578	FAF-MAPT	NA					

STRAIGHT-IN	CAT	A	B	C	D	E	
	DA / (OCH)	3759' / (337')			3820' / (398')		NA
RNP 0.24	ALS/NO ALS/ RVR/ ALS (m)	800 / 1500 / 750			1100 / 1800 / 1000		NA

**AUTORIZAÇÃO ESPECIAL PARA AERONAVE E TRIPULAÇÃO REQUERIDA  
SPECIAL AUTHORIZATION FOR AIRCRAFT AND CREW REQUIRED**

CHANGES: DIST. LAYOUT - WPT.