

**INSTRUMENT APPROACH
CHART (IAC)**

ALTAMIRA / Altamira (SBHT)

AD ELEV: 368'

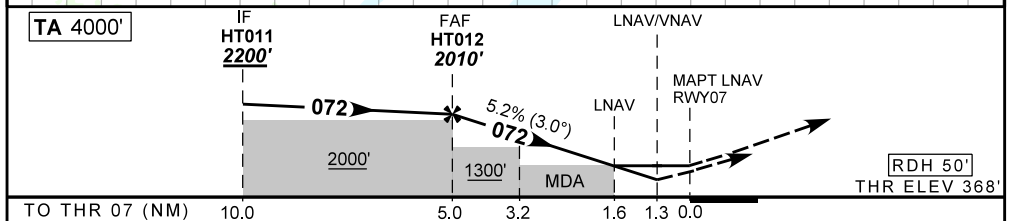
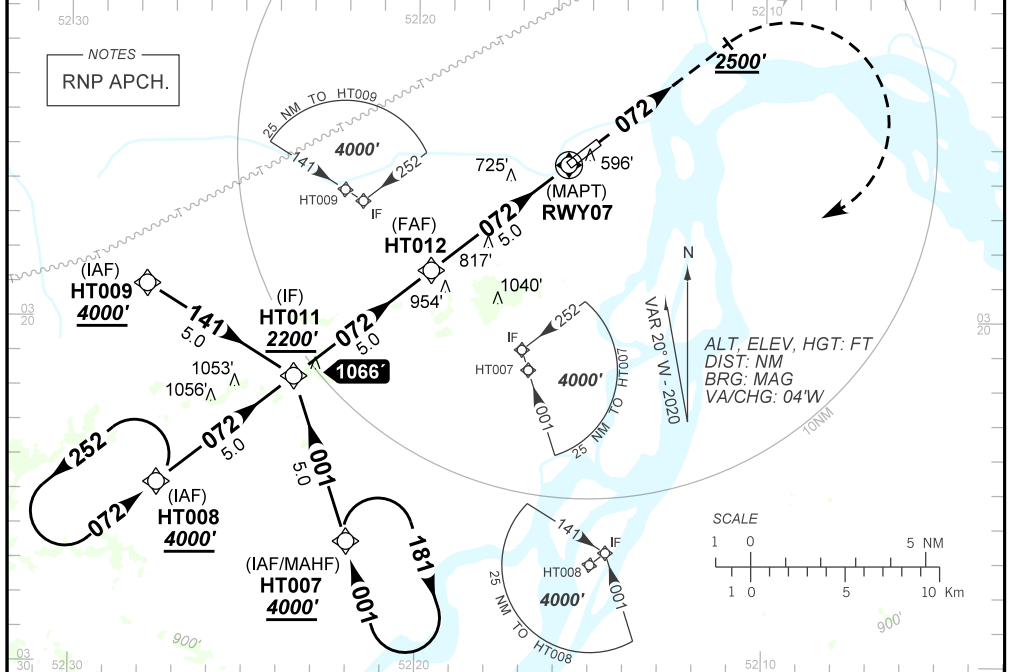
RNP RWY 07

ATIS NIL	APP NIL	AFIS ALTAMIRA 125.85	GNDC NIL
-------------	------------	-------------------------	-------------

N/A	FINAL CRS 072°	FAF: 2010'	LNAV/VNAV DA / (OCH): 819' / (451')	LNAV MDA / (OCH): 910' / (550')
-----	-------------------	---------------	--	------------------------------------

APCH Perdida: Subir para **4000'**. Manter rumo **072** até **2500'**. Curvar à DIREITA direto HT007 para espera.
Missed APCH: Climb to **4000'**. Maintain **072** course until **2500'**. Turn RIGHT direct to HT007 for holding.

RMK: Para sistemas não compensados BARO-VNAV, LNAV/VNAV não autorizado abaixo de 0°C ou acima de 50°C.
For uncompensated systems BARO-VNAV, LNAV/VNAV not authorized below 0°C or above 50°C.



5.0	4.0	3.2	3.0	2.0	1.6	RWY07	KT	090	110	130	150	170	190
2010	1692	1437	1373	1055	910	ALT	FPM	500	600	700	800		NA
1642	1324	1069	1005	687	550	(HGT)	FAF-MAPT						NA

STRAIGHT-IN	CAT	A	B	C	D	E
	DA / (OCH)	819' / (451')				
LNAV/VNAV	ALS/NO ALS/ RVR ALS (m)	NIL / 2100 / NIL				
	MDA / (OCH)	910' / (550')				
LNAV	ALS/NO ALS/ RVR ALS (m)	NIL / 2100 / NIL		NIL / 2500 / NIL		NA
	MDA / (OCH)	NA				
CIRCLING	MDA / (OCH)	NA				
	VIS (m)	NA				

CHANGES: IDENT, LAYOUT.