

**INSTRUMENT APPROACH  
CHART (IAC)**

**NATAL / Augusto Severo, MIL (SBNT)**

**AD ELEV: 171'**

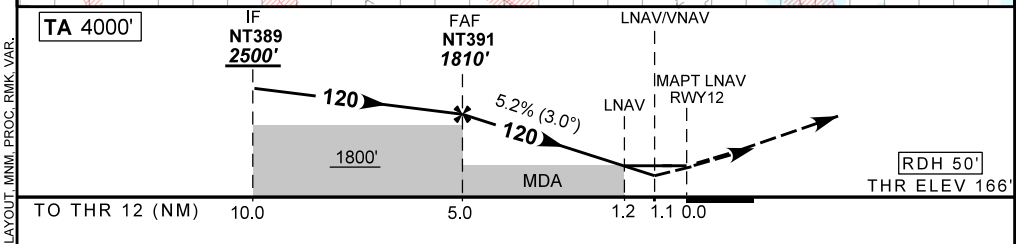
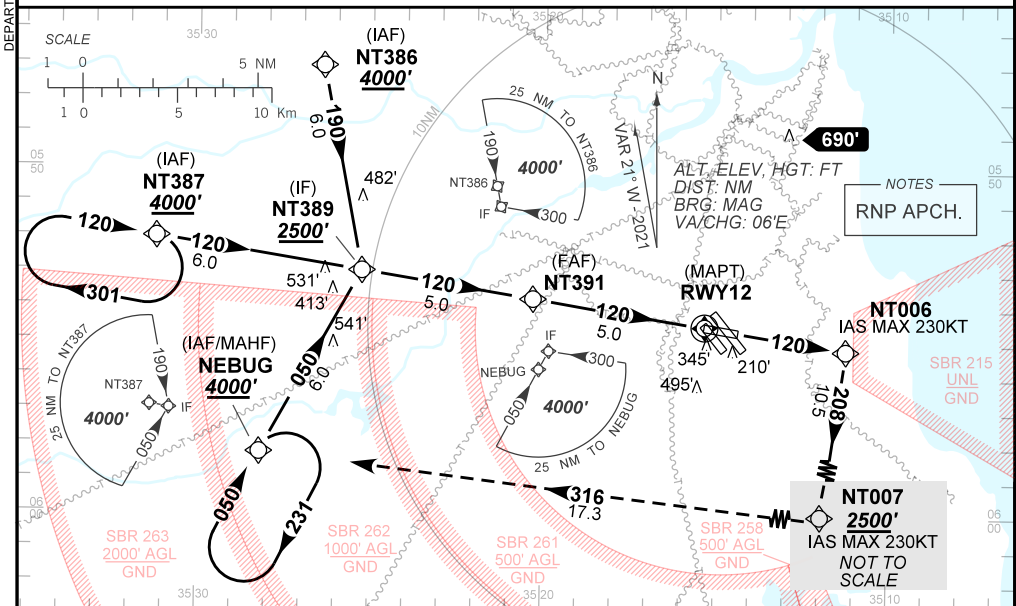
**RNP RWY 12**

D-ATIS <b>132.65</b>	APP NATAL <b>119.30 119.65 120.65 129.80</b>	TWR NATAL <b>118.70 122.80</b>	GNDC NATAL <b>121.90</b>
-------------------------	---	-----------------------------------	-----------------------------

TEMP LNAV/VNAV <b>MIN 0°C / MAX 50°C</b>	FINAL CRS <b>120°</b>	FAF: <b>1810'</b>	LNAV/VNAV DA / (OCH): <b>555' / (389')</b>	LNAV MDA / (OCH): <b>600' / (430')</b>
---	--------------------------	----------------------	---	---

APCH Perdida: Subir para **4000'**. Manter rumo **120** até NT006, então curvar à DIREITA rumo **208** até NT007. Curvar à DIREITA rumo **316** até NEBUG para espera. 2) IAS MAX 230KT até NT007.  
Missed APCH: Climb to **4000'**. Maintain course **120** until NT006, then turn RIGHT course **208** until NT007. Turn RIGHT course **316** to NEBUG for holding. 2) IAS MAX 230KT until NT007.

**RMK: NIL**



NT391	4.0	3.0	2.0	1.2	1.1	RWY12	Ground Speed (KT)	080	100	120	140	160	180
1810	1495	1180	860	600	555	ALT	FPM	500	600	700	800	900	1000
1639	1324	1009	689	430	389	(HGT)	FAF-MAPT	NIL					

STRAIGHT-IN	CAT	A	B	C	D	E
	DA / (OCH)	555' / (389')				NA
LNAV/VNAV	ALS/NO ALS/ RVR ALS (m)	NIL / 1800 / NIL				NA
	MDA / (OCH)	600' / (430')				NA
LNAV	ALS/NO ALS/ RVR ALS (m)	NIL / 1800 / NIL		NIL / 2000 / NIL		
	MDA / (OCH)	NA				
CIRCLING	MDA / (OCH)	NA				
	VIS (m)	NA				

DEPARTAMENTO DE CONTROLE DO ESPAÇO AEREO

CHANGES: AD ELEV, EAC, FREQ, IDENT, LAYOUT, MIN, PROC, RMK, VAR.