

**INSTRUMENT APPROACH  
CHART (IAC)**

**SÃO PAULO / Guarulhos - Gov. André Franco Montoro, INTL (SBGR)**

**AD ELEV: 2461'**

**ILS N or LOC N RWY 09L**

D-ATIS <b>127.75</b>	APP SÃO PAULO <b>129.75 119.15 120.45 120.85 133.85</b>	TWR GUARULHOS <b>118.40 132.75 135.20</b>	GNDC GUARULHOS <b>121.70 126.90</b>
-------------------------	--	--	--

LOC IUC <b>110.70 MHz</b>	FINAL CRS <b>095°</b>	FAF: <b>4250'</b>	CAT I DA / (OCH): <b>2645' / (200')</b>	LOC MDA / (OCH): <b>3030' / (590')</b>
------------------------------	--------------------------	----------------------	--	---

APCH Perdida: Subir para **6000'**. Manter rumo **095** até **4500'**. Após, curvar à ESQUERDA, RDL **278** SCP para espera em LOMEN.

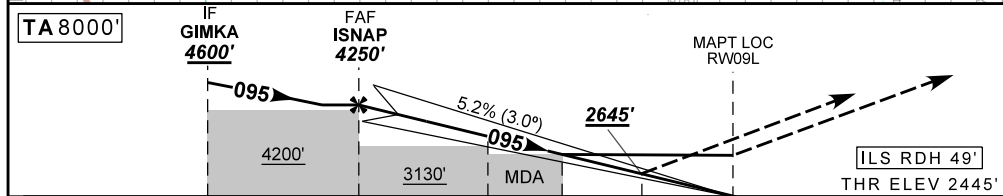
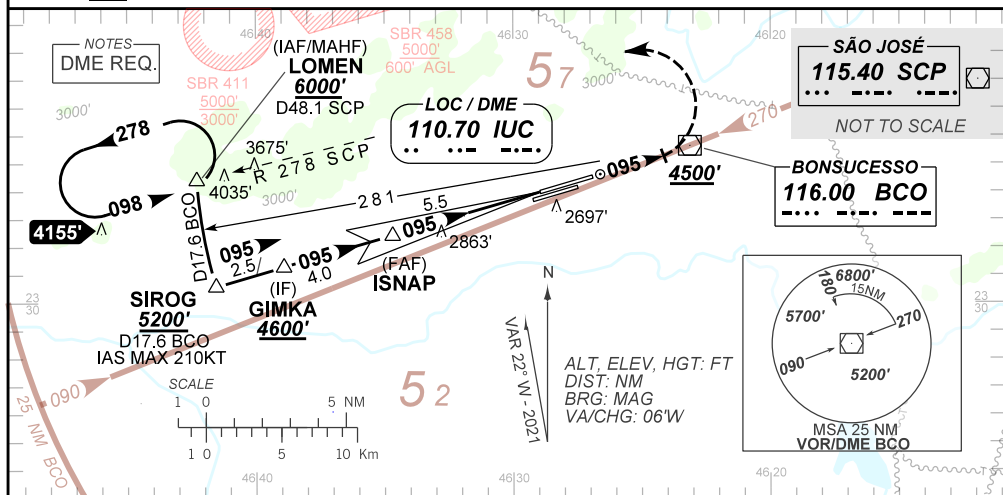
Missed APCH: Climb to **6000'**. Maintain course **095** until **4500'**. Then, turn LEFT **278** SCP RDL for holding at LOMEN.

RMK: 1) (\*) VIS RVR ALS 550m para aproximação utilizando Diretor de Voo, Piloto Automático ou Head-Up Display (HUD).

1) (\*) VIS RVR ALS 550m for approach using a Flight Director, Autopilot or Head-Up Display (HUD).

ARREMETIDA PERDIDA VISUAL RWY 09R: Subir para **6000'**. Manter proa **095** até **3300'**. Após, curvar à DIREITA proa **140** e aguardar instruções ATC.

VISUAL MISSED APPROACH RWY 09R: Climb to **6000'**. Maintain heading **095** until **3300'**. Then, turn RIGHT heading **140** and expect ATC instructions.



TO THR 09L (NM)	9.6								
TO IUC (DME)	9.8	5.5	2.0	1.7	0.5	0.0			
		5.7	2.2	1.9	0.7	0.2			

ISNAP	4.0	3.0	2.0	1.7	0.5	RWY09L	KT	090	110	130	150	170	190
4250	3768	3450	3131	3030	2645	ALT	FPM	500	600	700	800	900	1000
1805	1323	1005	686	590	200	(HGT)	FAF-MAPT				NA		

STRAIGHT-IN	CAT	A	B	C	D	E
CAT I	DA / (OCH)	2645' / (200')				
	ALS/NO ALS/ RVR ALS (m)	800 / 1200 / 700 (*)				
LOC	MDA / (OCH)	3030' / (590')				
	ALS/NO ALS/RVR ALS (m)	800 / 1600 / NIL		2000 / 2700 / NIL		
CIRCLING	MDA / (OCH)	NA				
	VIS (m)	NA				

CHANGES: NEW CHART.