

**INSTRUMENT APPROACH
CHART (IAC)**

**BAGÉ / Comandante Gustavo Kraemer (SBBG)
RNAV(GNSS) RWY 24
(CAT A, B, C)**

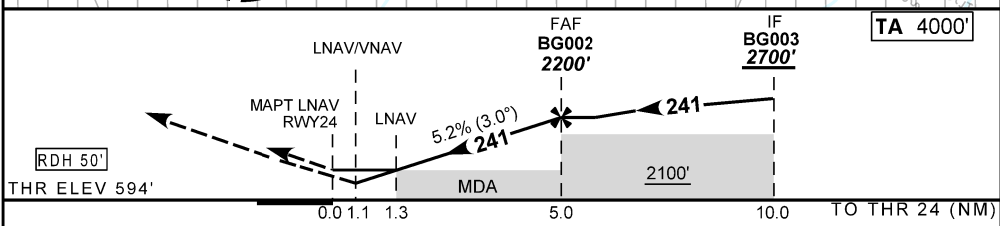
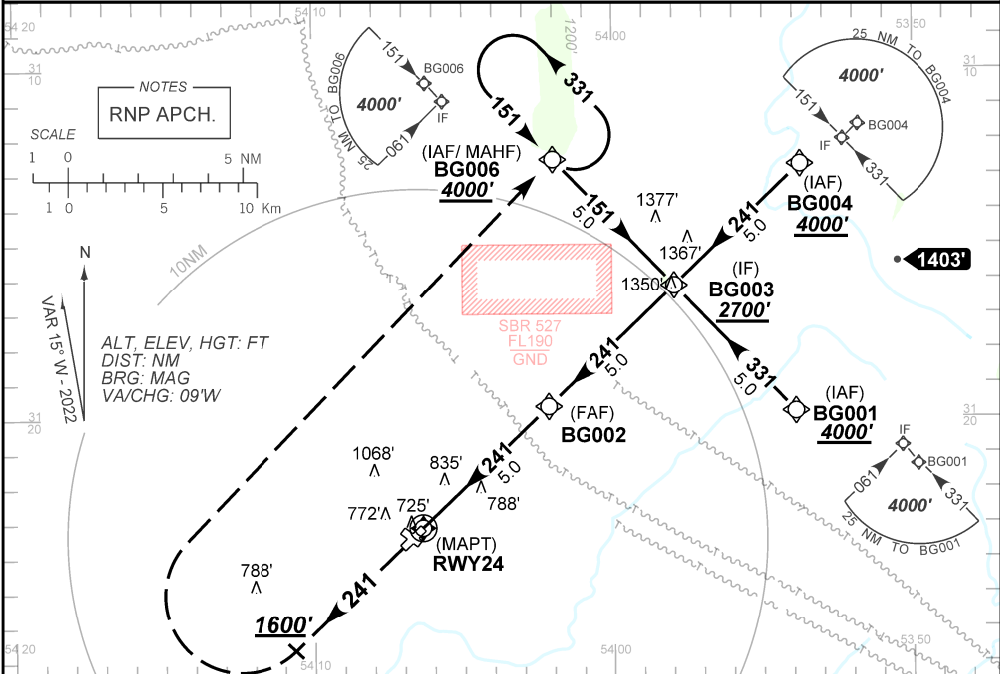
AD ELEV: 611'

ATIS NIL	APP NIL	AFIS BAGÉ 125.85	GNDC NIL
TEMP LNAV/VNAV MIN -10°C / MAX 50°C	FINAL CRS 241°	FAF: 2200'	LNAV/VNAV DA / (OCH): 990' / (396')
		LNAV MDA / (OCH): 1040' / (450')	

APCH Perdida: Subir para **4000'** no rumo **241**. Ao passar **1600'**, curvar à DIREITA direto BG006 para espera.
Missed APCH: Climb to **4000'** on course **241**. On passing **1600'**, turn RIGHT direct to BG006 for holding.

RMK: Procedimento não utilizável quando SBR 527 estiver ativado.
Procedure not usable when SBR 527 is activated.

DEPARTAMENTO DE CONTROLE DO ESPAÇO AÉREO



RWY24	1.3	2.0	3.0	4.0	BG002	Ground Speed (KT)	090	110	130	150	170	190
ALT	1040	1281	1599	1918	2200	FPM	500	600	700	800	NA	
(HGT)	450	687	1005	1324	1606	FAF-MAPT	NIL					

STRAIGHT-IN	CAT	A	B	C	D	E
	DA / (OCH)	990' / (396')				
LNAV/VNAV	ALS/NO ALS/ RVR ALS (m)	NIL / 1800 / NIL				
	MDA / (OCH)	1040' / (450')				
LNAV	ALS/NO ALS/ RVR ALS (m)	NIL / 1800 / NIL		NIL / 2100 / NIL		
	MDA / (OCH)	NA				
CIRCLING	MDA / (OCH)	NA				
	VIS (m)					