

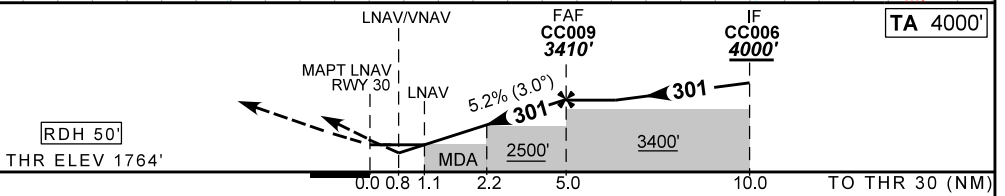
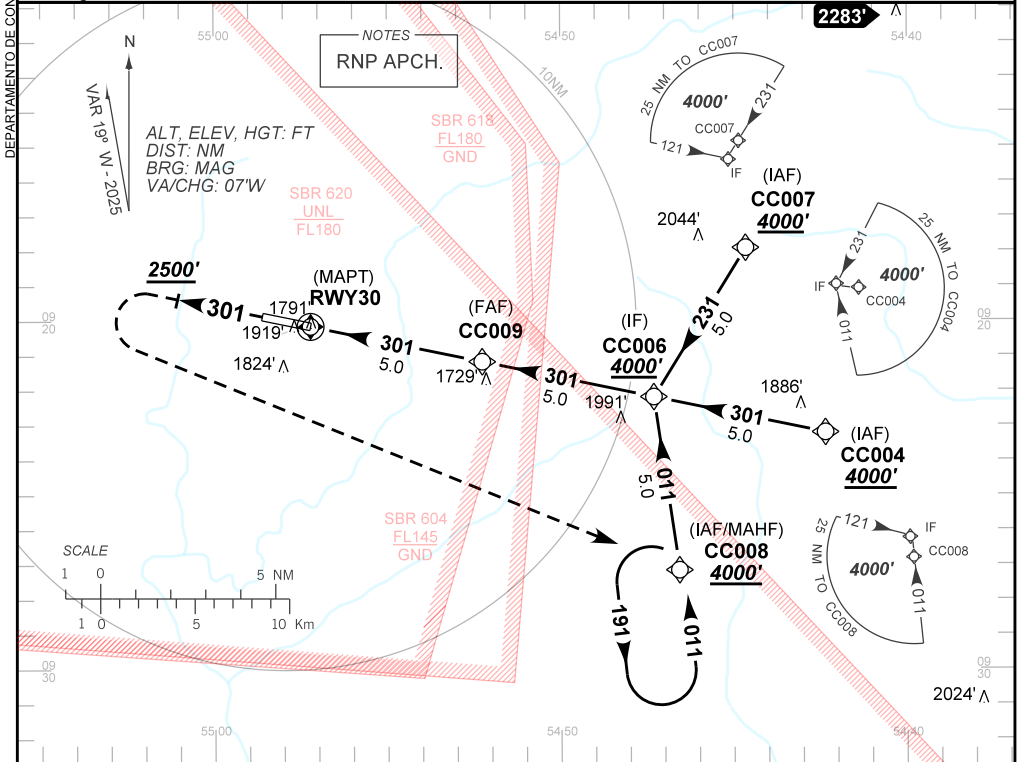
INSTRUMENT APPROACH GUARANTÁ DO NORTE / Campo de Provas Brig. Veloso (CPBV), MIL (SBCC) CHART (IAC)

AD ELEV: 1777'

RNP Z RWY 30

| | | | |
|---|--------------------------|--|--|
| ATIS NIL | APP NIL | AFIS CACHIMBO 125.90 | TWR NIL |
| TEMP LNAV/VNAV MIN -20°C / MAX 50°C | FINAL CRS 301° | FAF: 3410' | LNAV/VNAV DA / (OCH): 2065' / (301') |
| | | LNAV MDA / (OCH): 2170' / (410') | |

APCH Perdida: Subir para **4000'**. Manter rumo **301°** até passar **2500'**. Após, curvar à ESQUERDA direto CC008 para espera.
 Missed APCH: Climb to **4000'**. Maintain course **301°** until passing **2500'**. After, turn LEFT direct CC008 for holding.



| RWY30 | 1.1 | 2.0 | 2.2 | 3.0 | 4.0 | CC009 |
|-------|------|------|------|------|------|-------|
| ALT | 2170 | 2451 | 2515 | 2769 | 3088 | 3410 |
| (HGT) | 410 | 687 | 751 | 1005 | 1324 | 1646 |

| Ground Speed (KT) | 090 | 110 | 130 | 150 | 170 | 190 |
|-------------------|-----|-----|-----|-----|-----|------|
| FPM | 500 | 600 | 700 | 800 | 900 | 1000 |
| FAF-MAPT | NA | | | | | |

| STRAIGHT-IN | CAT | A | B | C | D | E | |
|-------------|-------------------------|------------------|---|------------------|---|----|--|
| | DA / (OCH) | 2065' / (301') | | | | NA | |
| LNAV/VNAV | ALS/NO ALS/ RVR ALS (m) | NIL / 1400 / NIL | | | | NA | |
| | MDA / (OCH) | 2170' / (410') | | | | | |
| LNAV | ALS/NO ALS/RVR ALS (m) | NIL / 1600 / NIL | | NIL / 1900 / NIL | | | |
| | MDA / (OCH) | NA | | | | | |
| CIRCLING | MDA / (OCH) | NA | | | | | |
| | VIS (m) | NA | | | | | |

CHANGES: EAC. PROC. VAR. OBST.