

**INSTRUMENT APPROACH  
CHART (IAC)**

**SANTA MARIA / Santa Maria (SBSM)**

**NAV APV RWY 29**

(ONLY CAT E)

**USO EXCLUSIVO F-39  
F-39 USE ONLY**

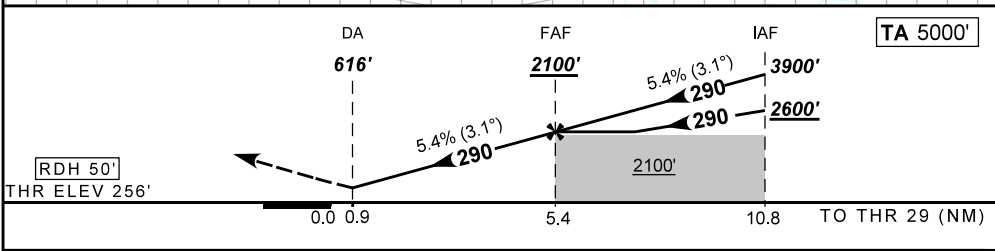
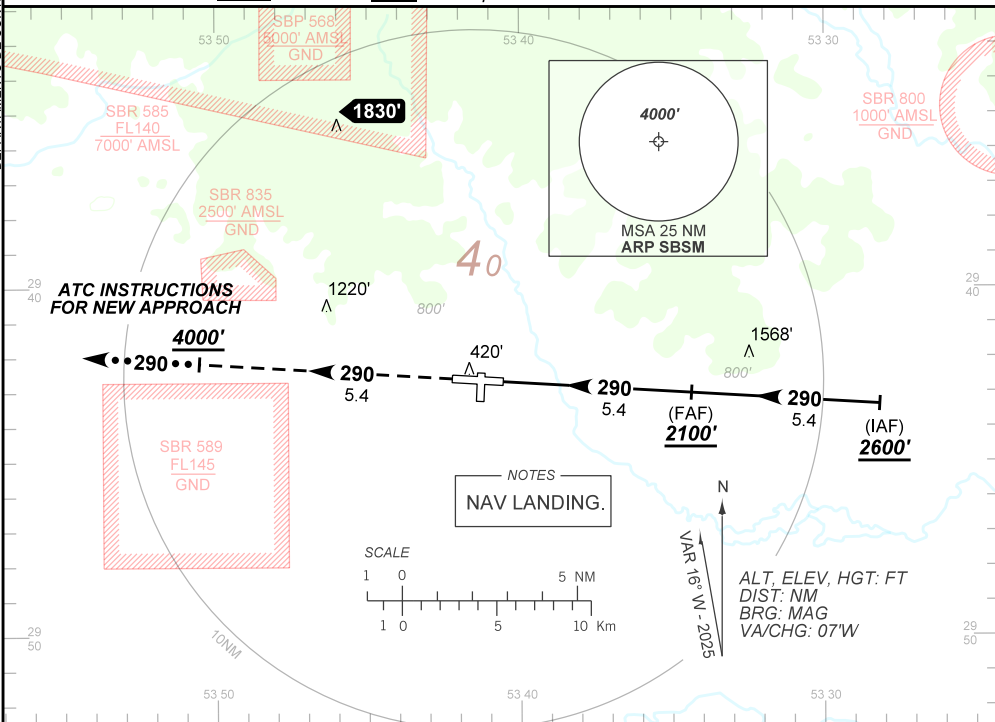
**AD ELEV: 289'**

<b>ATIS</b> 127.75	<b>APP SANTA MARIA</b> 119.35 121.35	<b>TWR SANTA MARIA</b> 118.30 118.85	<b>AFIS SANTA MARIA</b> 119.35 121.35 118.30	<b>GNDC</b> NIL
<b>TEMP LNAV/VNAV</b> MIN -20°C / MAX 50°C		<b>FINAL CRS</b> 290°	<b>FAF:</b> 2100'	<b>NAV APV</b> DA / (OCH): 616' / (360')
				<b>N/A</b>

APCH Perdida: Subir para **4000'** no rumo **290** e aguardar instruções ATC.

Missed APCH: Climb to **4000'** on course **290** and expect further ATC instructions.

DEPARTAMENTO DE CONTROLE DO ESPAÇO AEREO



RWY29	2.0	3.0	4.0	FAF					
ALT	971	1303	1635	2100					
(HGT)	715	1047	1379	1844					

Ground Speed (KT)	090	110	130	150	170	190
FPM	500	600	700	800	900	1000
FAF-MAPT	NIL					

STRAIGHT-IN	<b>CAT</b>	<b>ONLY CAT E</b>
	<b>DA / (OCH)</b>	<b>616' / (360')</b>
NAV APV	ALS/NO ALS/ RVR ALS (m)	NIL / 1600 / NIL
		<b>NA</b>
CIRCLING	<b>MDA / (OCH)</b>	<b>NA</b>
	VIS (m)	

CHANGES: NEW CHART