

STANDARD ARRIVAL CHART
INSTRUMENT (STAR)

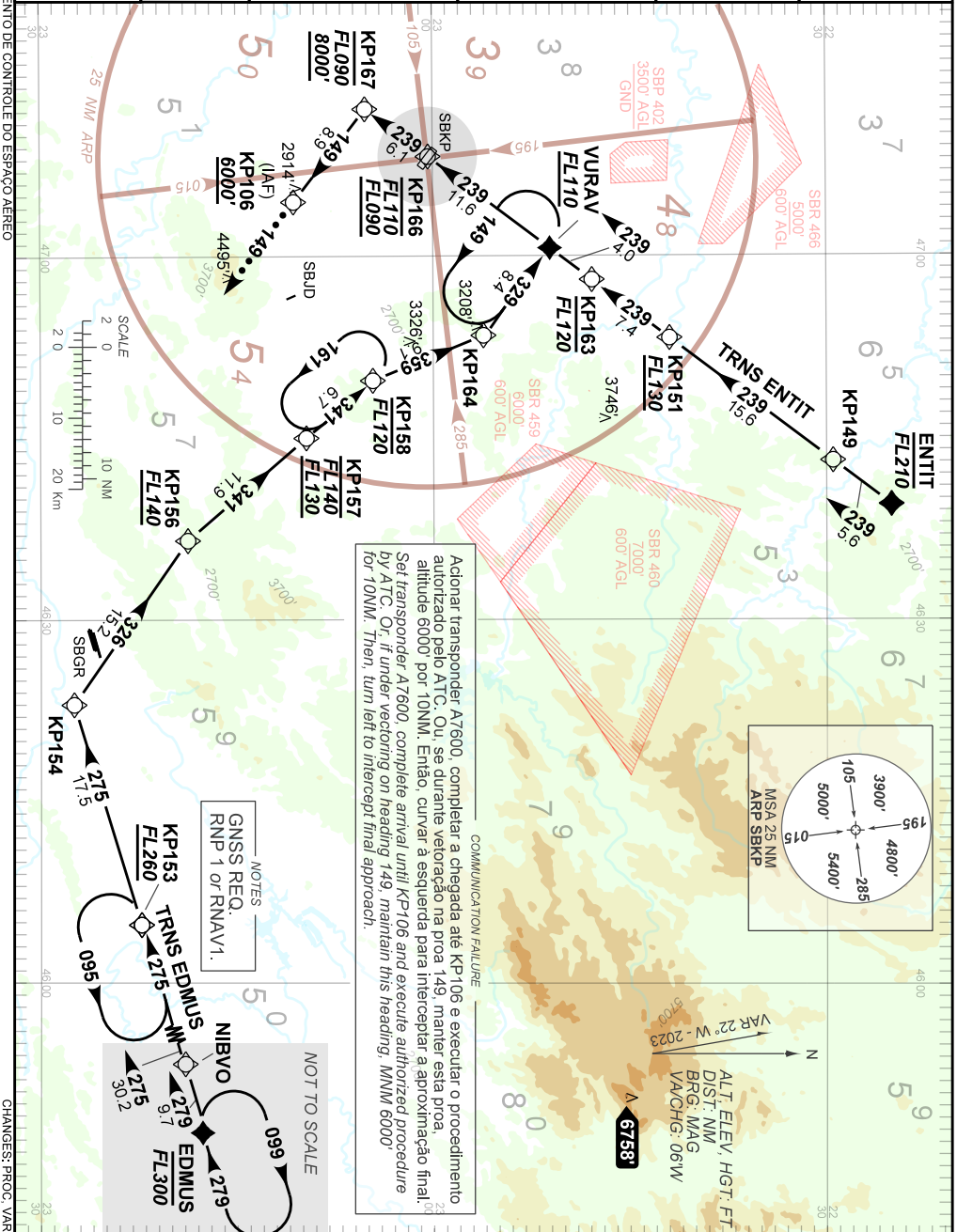
CAMPINAS / Viracopos, INTL (SBKP)

RWY 33

RNAV VURAV 2A

AD ELEV: 2170'

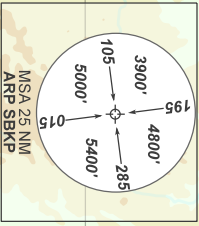
TA 8000'	D-ATIS 127.825	APP RIO DE JANEIRO 121.35 124.70 123.90 125.60 119.525 134.40	APP SÃO PAULO 119.05 119.60 122.75 129.00 119.60 120.85	ACC BRASÍLIA 127.25 134.00 123.35 126.15	TWR CAMPINAS 118.25
----------	-------------------	---	---	--	------------------------



Acionar transponder A7600, completar a chegada até KP106 e executar o procedimento autorizado pelo ATC. Ou, se durante vortação na proa 149, manter esta proa, altitude 6000' por 10NM. Então, curvar a esquerda para interceptar a aproximação final. Set transponder A7600, complete arrival until KP106 and execute authorized procedure by ATC. Or, if under vortering on heading 149, maintain this heading. MNM 6000' for 10NM. Then, turn left to intercept final approach.

NOTES
GNSS REQ.
RNP 1 or RNAV1.

NOT TO SCALE



ALT. ELEV. HGT.: FT
DIST. NM
BRG. MAG
VA/CHG.: 06W