

DEPARTURE CHART
INSTRUMENT (SID)

BELO HORIZONTE / Pampulha - Carlos Drummond de Andrade (SBBH)

RWY 13 / 31

AD ELEV: 2589'

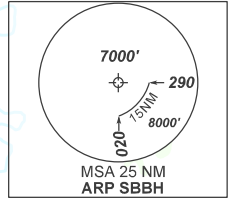
OMNI

TA 8000'	ATIS 127.45	TWR BELO HORIZONTE 118.00	APP BELO HORIZONTE 119.10 119.30 119.65 120.20 128.55 129.10 129.40	ACC CURITIBA 124.00 125.35	ACC BRASÍLIA 126.75 127.30 127.00 123.00 124.80 135.55
----------	-------------	---------------------------	---------------------------------------------------------------------	----------------------------	--------------------------------------------------------

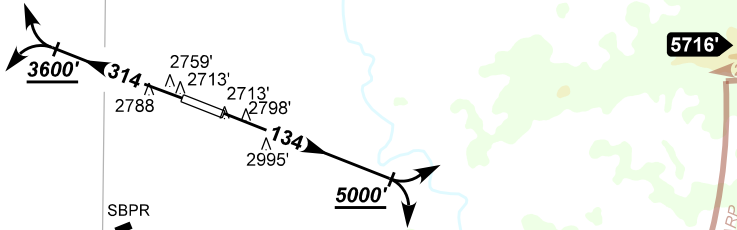
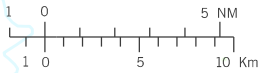
DEPARTAMENTO DE CONTROLE DO ESPAÇO AÉREO

VAR 23° W - 2022

ALT, ELEV, HGT: FT
DIST: NM
BRG: MAG
VA/CHG: 04°W



SCALE



SBP 340
1000' AGL
GND

4544'
RMK

- 1 - Gradiente MNM de subida:
MNM climb gradient:
RWY 13: 6.1% até /until 5000'. Após /After, 3.3%.
RWY 31: 6.8% até /until 3600'. Após /After, 3.3%.
- 2 - Obstáculos próximos não considerados para cálculo do gradiente de subida (PDG):
Close-in obstacles not considered for procedure gradient (PDG):
RWY 13: Terreno / Terrain: a partir de / from THR31, AZM190, DIST 220m, ELEV 2713'.
RWY 31: Terreno / Terrain: a partir de / from THR13, AZM001, DIST 274m, ELEV 2713'.
- 3 - DEP RWY 13/31:
Não permitidas curvas antes do DER.
Turns before DER not allowed.
- 4 - DEP RWY 13/31:
Subir restrito para 8000' até 25NM de SBBH e aguardar instruções ATC.
Climb restrict to 8000' until 25NM from SBBH and expect further ATC instructions.
- 5 - Falha de Comunicações / Communications failure:
Após 25NM distante de SBBH, direto para rota do plano de voo.
After 25NM away from SBBH, direct to flight plan route.

SBR 386
5500'
1000' AGL

SBR 327
7000'
GND

CHANGES: EAC, FREQ, LAYOUT.