

**INSTRUMENT APPROACH
CHART (IAC)**

BOA VISTA / Atlas Brasil Cantanhede, INTL (SBBV)

VOR Y RWY 26

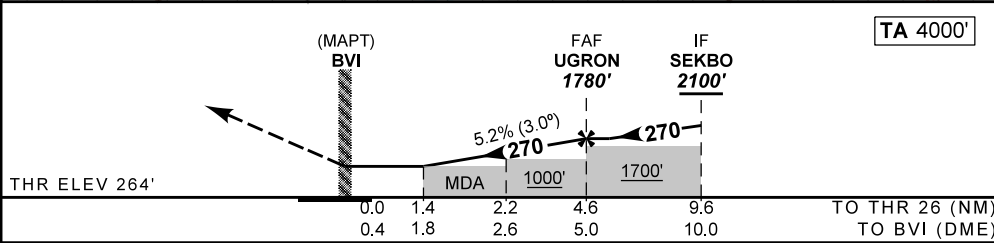
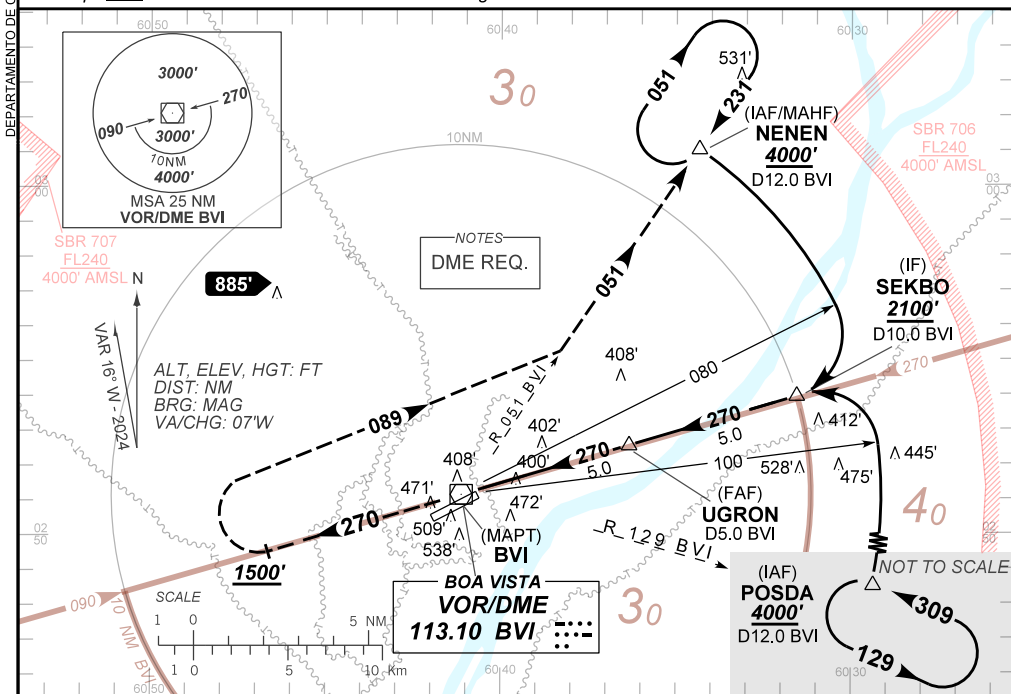
AD ELEV: 276'

D-ATIS NIL	APP BOA VISTA 120.10	TWR BOA VISTA 118.10	GNDC BOA VISTA NIL
----------------------	--------------------------------	--------------------------------	------------------------------

VOR BVI 113.10 MHz	FINAL CRS 270°	FAF: 1780'	N/A	VOR/DME MDA / (OCH): 750' / (490')
------------------------------	--------------------------	----------------------	-----	--

APCH Perdida: Subir para **4000'**. Manter a RDL **270** do VOR BVI até cruzar **1500'**. Curvar a DIREITA, proa **089** para interceptar a RDL **051** VOR BVI até NENEN para espera.

Missed APCH: Climb to **4000'**. Maintain **270** RDL BVI VOR until passing **1500'**. Turn RIGHT, heading **089** to intercept **051** RDL BVI VOR until NENEN for holding.



RWY26	1.4	2.2	3.0	4.0	UGRON		Ground Speed (KT)	090	110	130	150	170	190
ALT	750	1080	1269	1588	1780		FPM	500	600	700	800	900	1000
(HGT)	490	816	1005	1324	1516		FAF-MAPT	NA					

STRAIGHT-IN	CAT	A	B	C	D	E
	MDA / (OCH)	750' / (490')				
VOR	ALS/NO ALS/ RVR ALS (m)	NIL / 1600 / NIL		NIL / 2300 / NIL		
	MDA / (OCH)	NA				
CIRCLING	MDA / (OCH)	NA				
	VIS (m)	NA				

CHANGES: ALT, DIST, HDG.