

**INSTRUMENT APPROACH  
CHART (IAC)**

**SALVADOR / Deputado Luís Eduardo Magalhães, INTL (SBSV)**

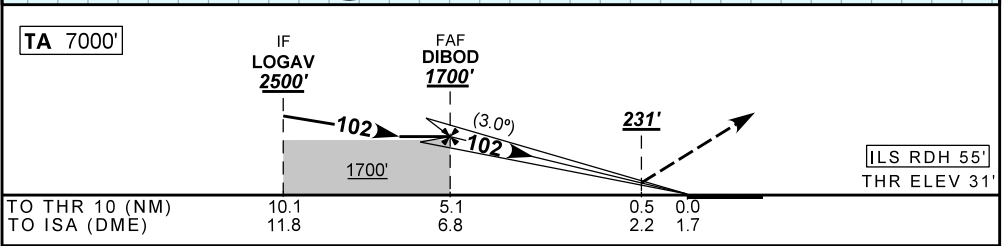
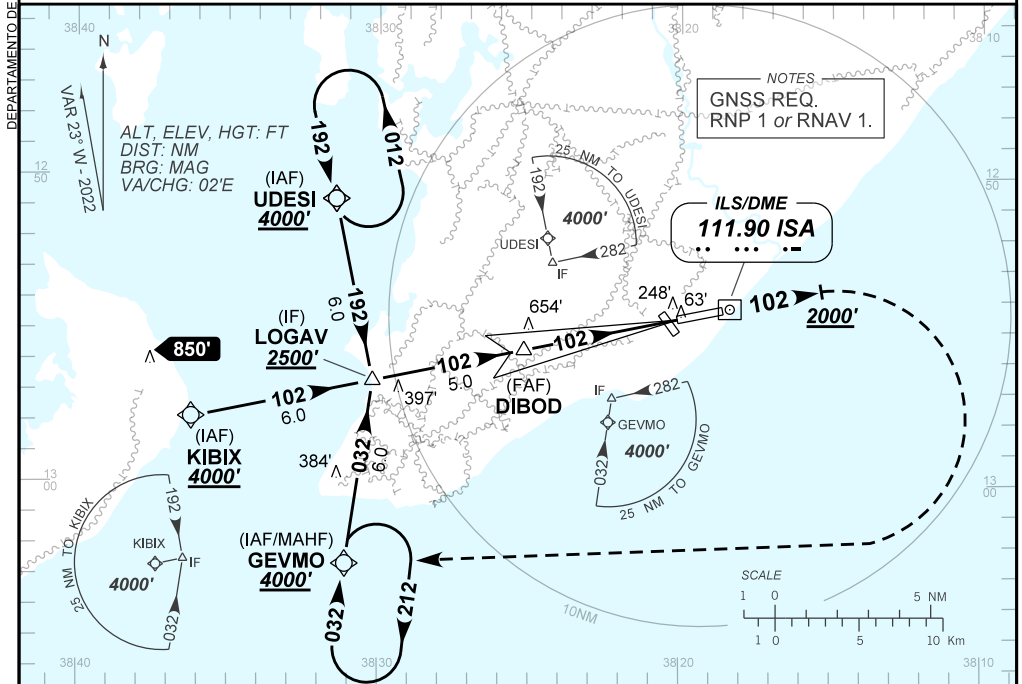
**AD ELEV: 66'**

**ILS Z RWY 10**

D-ATIS <b>127.75</b>	APP SALVADOR <b>119.35 119.80 120.80 129.45</b>	TWR SALVADOR <b>118.30 118.60 118.95 121.10</b>	GNDC SALVADOR <b>121.90</b>
ILS/DME ISA <b>111.90 MHz</b>	FINAL CRS <b>102°</b>	FAF: <b>1700'</b>	CAT I DA / (OCH): <b>231' / (200')</b>
			N/A

APCH Perdida: Subir para **4000'**. Manter proa **102** até cruzar **2000'**. Após, curvar à DIREITA direto GEVMO para espera.

Missed APCH: Climb to **4000'**. Maintain heading **102** until passing **2000'**. After, turn RIGHT direct GEVMO for holding.



NIL	RWY 10	Ground Speed (KT)	090	110	130	150	170	190
NIL	ALT	FPM	NIL					
NIL	(HGT)	FAF-MAPT	NA					

STRAIGHT-IN	CAT	A	B	C	D	E
CAT I	DA / (OCH)	231' / (200')				NA
	ALS/NO ALS/ RVR ALS (m)	NIL / 1200 / NIL				
CIRCLING	MDA / (OCH)	NA				
	VIS (m)					

CHANGES: LAYOUT, OBST.