

INSTRUMENT APPROACH  
CHART (IAC)

NATAL / Campo Augusto Severo, MIL (SBNT)

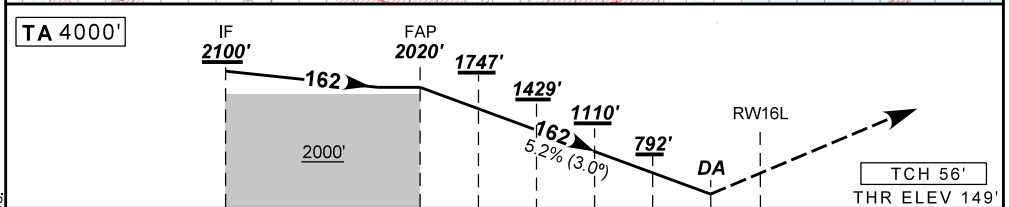
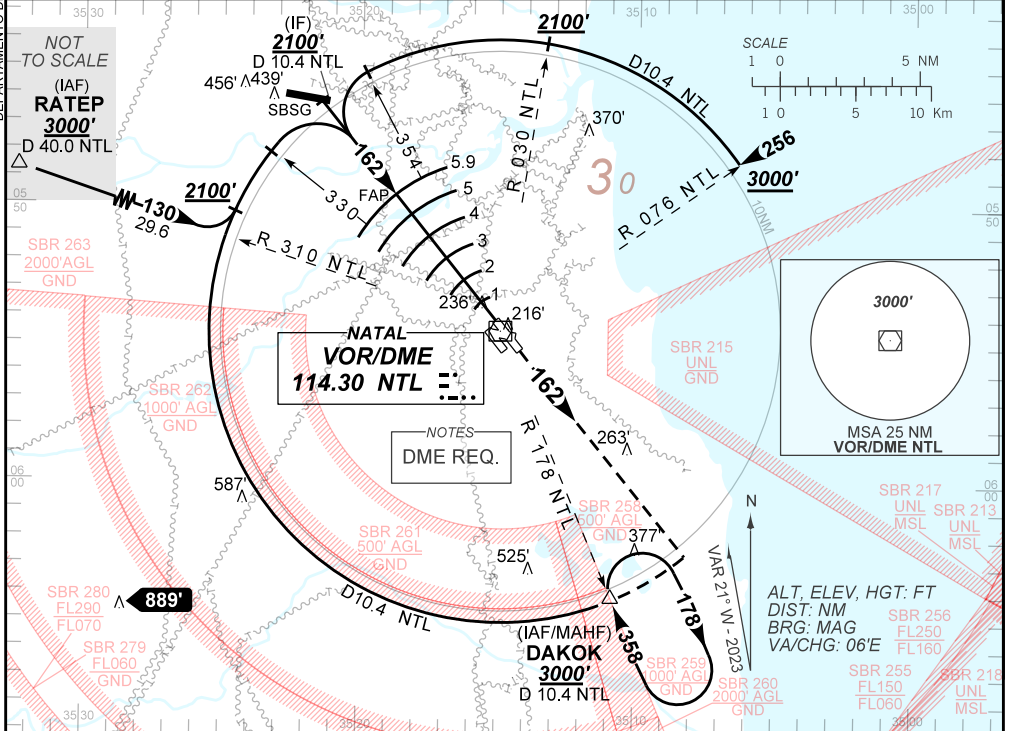
AD ELEV: 169'

USO EXCLUSIVO ACFT MILITARES  
MILITARY ACFT ONLY

PAR Z RWY 16L

D-ATIS 132.65	APP NATAL 119.30 119.65 120.65 129.80	PAR NATAL 128.875 132.40 348.65 359.00	TWR NATAL 118.70 122.80	GNDC NATAL 121.90
N/A	FINAL CRS 162°	FAP: 2020'	PAR DA / (OCH): 415' / (266')	N/A

APCH Perdida: Subir para **3000'**. Manter proa **162** para interceptar arco DME 10.4 NM do VOR NTL até DAKOK para espera.  
Missed APCH: Climb to **3000'**. Maintain heading **162** to intercept 10.4 NM DME arc from NTL VOR until DAKOK for holding.



TO TDZ 16L (NM)	10.2	5.9	5.0	4.0	3.0	2.0	0.8	0.2
-----------------	------	-----	-----	-----	-----	-----	-----	-----

5.9	5.0	4.0	3.0	2.0	0.8	TDZ	Ground Speed (KT)	090	110	130	150	170	190
2020	1747	1429	1110	792	415	ALT	FPM	500	600	700	800	900	1000
1871	1592	1274	955	637	266	(HGT)	FAF-MAPT	NA					

STRAIGHT-IN	CAT	A	B	C	D	E
	PAR	DA / (OCH)	415' / (266')			
		ALS/NO ALS/ RVR (m)	NIL / 1300 / 1250			
CIRCLING	MDA / (OCH)	NA				
	VIS (m)	NA				

AIRAC AMDT 2310A2 05 OCT 23

USO EXCLUSIVO ACFT MILITARES / MILITARY ACFT ONLY

SBNT\_IAC\_01G 1/1  
IAC PAR Z RWY 16L

DEPARTAMENTO DE CONTROLE DO ESPAÇO AÉREO

CHANGES: EAC IDENT LAYOUT PROC.