

**INSTRUMENT APPROACH
CHART (IAC)**

ALTA FLORESTA / Aeroporto Piloto Osvaldo Marques Dias (SBAT)

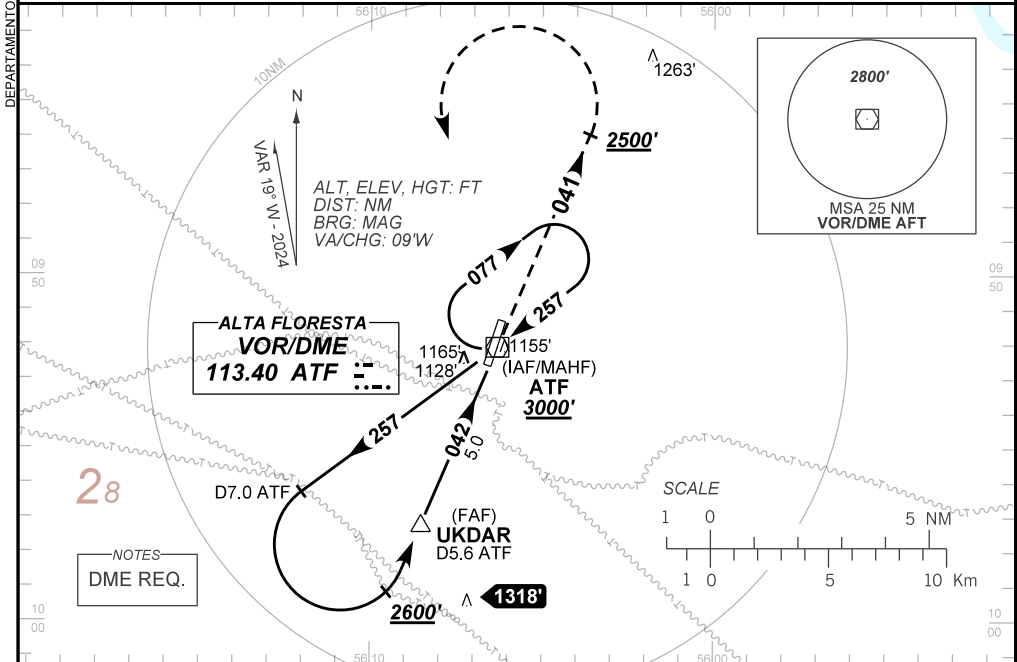
AD ELEV: 948'

VOR X RWY 04

ATIS NIL	APP NIL	AFIS FLORESTA 126.60	GND NIL
VOR ATF 113.40	FINAL CRS 042°	FAF: 2590'	N/A
VOR		MDA / (OCH): 1410' / (470')	

APCH Perdida: Subir para **3000'**. Manter a RDL **041** do VOR ATF até **2500'**. Após, curvar à ESQUERDA direto VOR ATF para espera.

Missed APCH: Climb to **3000'**. Maintain RDL **041** ATF VOR until **2500'**. After, turn LEFT direct ATF VOR for holding.



TA 4000'	FAF UKDAR 2590'	IAF/MAHF ATF 3000'
2600'	2500'	2600'
041	042	042
257	257	257
5.2% (3.0°)	MAPT RWY04	THR ELEV 942'
TO THR 04 (NM) 6.4	5.0	1.3
TO ATF (DME) 7.0	5.6	1.9
		0.0
		0.6

	UKDAR	4.0	3.0	2.0	1.3	RWY04	Ground Speed (KT)	090	110	130	150	170	190
	2590	2266	1947	1629	1410	ALT	FPM	500	600	700	800	900	NA
	1648	1324	1005	687	470	(HGT)	FAF-MAPT	NA					

STRAIGHT-IN	CAT	A	B	C	D	E
VOR	MDA / (OCH)	1410' / (470')				NA
	ALS/NO ALS/ RVR ALS (m)	NIL / 1600 / NIL		NIL / 2200 / NIL		
CIRCLING	MDA / (OCH)	NA				
	VIS (m)					

CHANGES: THR ELEV.