

**INSTRUMENT APPROACH
CHART (IAC)**

SÃO CARLOS / Mário Pereira Lopes, INTL (SDSC)

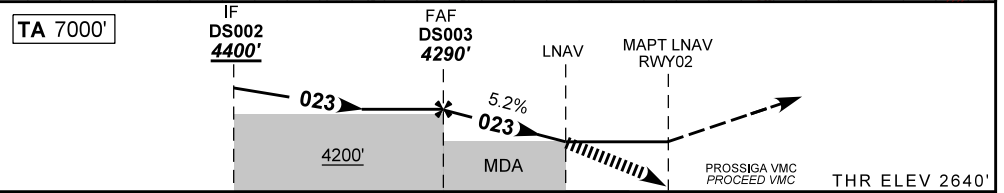
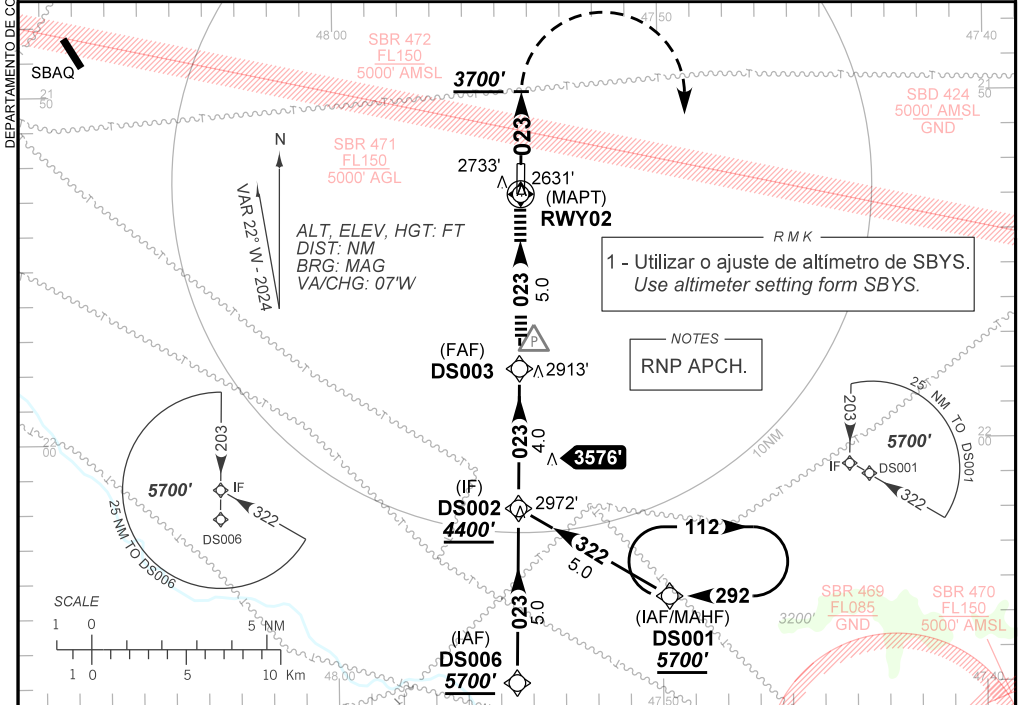
**USO EXCLUSIVO ACFT MILITARES
MILITARY ACFT ONLY**

AD ELEV: 2648'

RNP Z RWY 02

ATIS ACADEMIA 127.70	APP ACADEMIA 120.10 122.40 122.80 124.90 135.45			AFIS NIL	GNDC NIL
NA	FINAL CRS 023°	FAF: 4290'	NA	LNAV RASS (SBYS) MDA / (OCH): 4150' / (1510')	

APCH Perdida: Subir para **5700'**. Manter proa **023** até **3700'**. Após, curvar à DIREITA direto DS001 para espera.
Missed APCH: Climb to **5700'**. Maintain heading **023** until **3700'**. After, turn RIGHT direct DS001 for holding.



TO THR 02 (NM)	9.0	5.0	4.6	0.0
----------------	-----	-----	-----	-----

	DS003	4.6	RWY02	Ground Speed (KT)	090	110	130	150	170	190
	4290	4150	ALT	FPM	500	600	700	800	900	NA
	1650	1510	(HGT)	FAF-MAPT	NIL					

STRAIGHT-IN	CAT	A	B	C	D	E
LNAV	MDA / (OCH)	4150' / (1510')				NA
RASS (SBYS)	ALS/NO ALS/ RVR ALS (m)	NIL / 5000 / NIL				
CIRCLING	MDA / (OCH)	NA				
	VIS (m)					