

**INSTRUMENT APPROACH  
CHART (IAC)**

**PORTO ALEGRE / Salgado Filho, INTL (SBPA)  
NAV APV RWY 11**

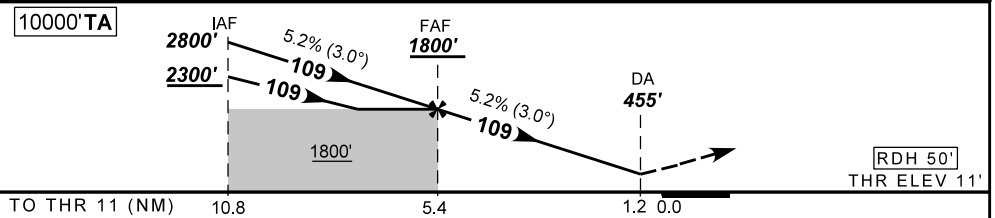
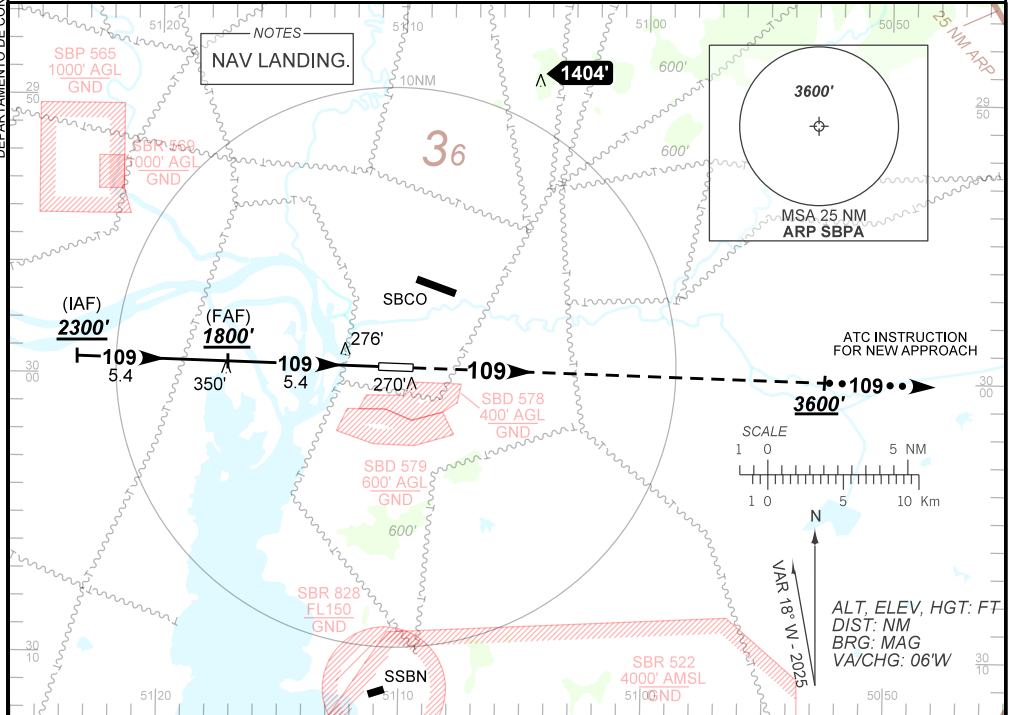
**AD ELEV: 30'**

(ONLY CAT E)

D-ATIS <b>132.35</b>	APP PALEGRE <b>119.00 120.10 120.55 128.90</b>		TWR PALEGRE <b>118.10</b>	GND C PALEGRE <b>121.90</b>
TEMP LNAV/VNAV <b>MIN -10°C / MAX 50°C</b>	FINAL CRS <b>109°</b>	FAF: <b>1800'</b>	NAV APV DA / (OCH): <b>455' / (444')</b>	<b>N/A</b>

APCH Perdida: Subir para **3600'** no rumo **109°** e aguardar instruções ATC.  
Missed APCH: Climb to **3600'** on course **109°** and expect further ATC instructions.

DEPARTAMENTO DE CONTROLE DO ESPAÇO AÉREO



FAF	5.0	4.0	3.0	2.0	1.2	RWY11	Ground Speed (KT)	090	110	130	150	170	190
1800	1653	1335	1016	698	455	ALT	FPM	500	600	700	800	900	1000
1789	1642	1324	1005	687	444	(HGT)	FAF-MAPT	NIL					

STRAIGHT-IN	CAT	ONLY CAT E
	DA / (OCH)	455' / (444')
NAV APV	ALS/NO ALS/ RVR ALS (m)	NIL / 2100 / NIL
		NA
CIRCLING	MDA / (OCH)	NA
	VIS (m)	

CHANGES: NEW CHART.