

**INSTRUMENT APPROACH  
CHART (IAC)**

**JACAREACANGA / Jacareacanga (SBEK)**

**AD ELEV: 324'**

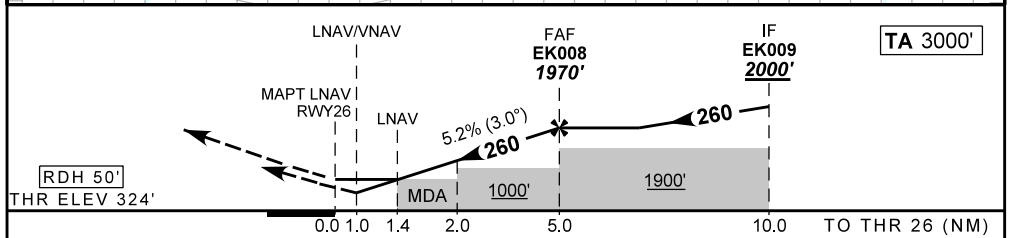
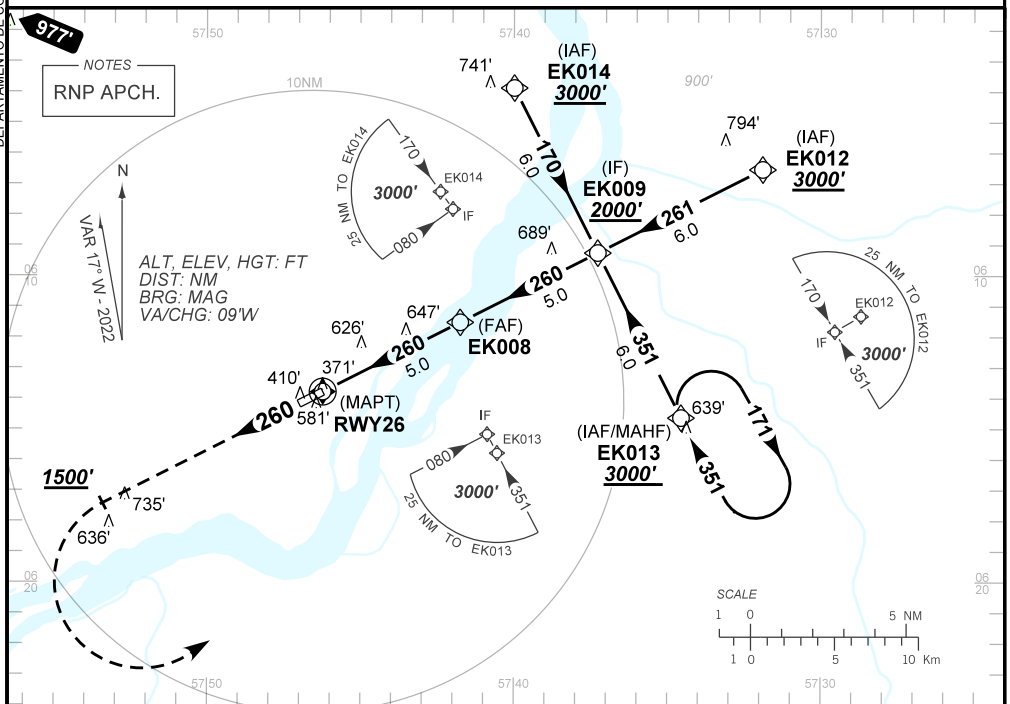
**RNP RWY 26**

ATIS NIL	APP NIL	ERAA 130.425	AFIS NIL	GNDC NIL
TEMP LNAV/VNAV MIN 0°C / MAX 50°C	FINAL CRS 260°	FAF: 1970'	LNAV/VNAV DA / (OCH): 694' / (370')	LNAV MDA / (OCH): 810' / (490')

APCH Perdida: Subir para **3000'**. Manter proa **260** até **1500'**. Após, curvar à ESQUERDA direto EK013 para espera.

Missed APCH: Climb to **3000'**. Maintain heading **260** until **1500'**. After, turn LEFT direct EK013 for holding.

DEPARTAMENTO DE CONTROLE DO ESPAÇO AÉREO



RWY26	1.4	2.0	3.0	4.0	EK008	Ground Speed (KT)	090	110	130	150	170	190
ALT	810	1012	1329	1648	1970	FPM	500	600	700	800	900	NA
(HGT)	490	688	1005	1324	1646	FAF-MAPT	NIL					

STRAIGHT-IN	CAT	A	B	C	D	E	
	DA / (OCH)	694' / (370')					NA
LNAV/VNAV	ALS/NO ALS/ RVR ALS (m)	NIL / 1700 / NIL					
	MDA / (OCH)	810' / (490')					
LNAV	ALS/NO ALS/ RVR ALS (m)	NIL / 1700 / NIL		NIL / 2300 / NIL			
CIRCLING	MDA / (OCH)	NA					
	VIS (m)						

CHANGES: AD ELEV. AFIS. ERAA.