

**INSTRUMENT APPROACH
CHART (IAC)**

RIO DE JANEIRO / Campo Nero Moura, MIL (SBSC)

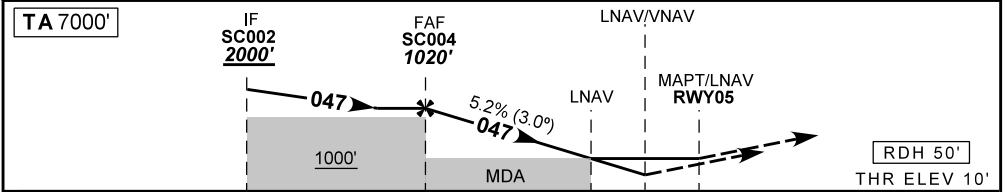
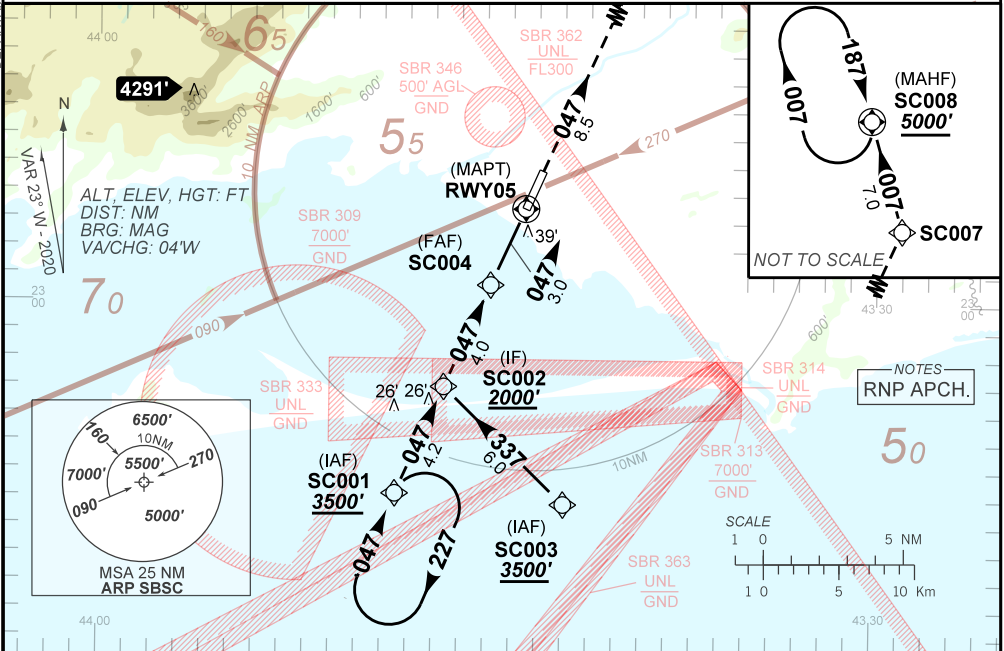
AD ELEV: 10'

RNP Y RWY 05

ATIS NIL	133.70 132.50 120.55 124.95	APP RIO 134.40 121.25 139.95 129.80	119.00 125.95	TWR SANTA CRUZ 118.80 122.90	GND C SANTA CRUZ 121.80
N/A	FINAL CRS 047°	FAF: 1020'	LNAV/VNAV DA / (OCH): 320' / (310')	LNAV MDA / (OCH): 460' / (450')	

APCH Perdida: Subir para **5000'**, gradiente MNM 4.0%. Manter rumo **047** até SC007. Após, curvar à ESQUERDA no rumo **007** até SC008 para espera.
 Missed APCH: Climb to **5000'**, MNM gradient 4.0%. Maintain course **047** up to SC007. Then, turn LEFT on course **007** up to SC008 for holding.

RMK: Para sistemas BARO-VNAV não compensados, procedimento LNAV/VNAV não autorizado abaixo de -20°C ou acima de 50°.
 For uncompensated systems BARO-VNAV, LNAV/VNAV procedure not authorized below -20°C or above 50°.



TO THR 05 (NM)	7.0	3.0	1.3	0.8	0.0					
	SC004	2.0	1.3	RWY05						
	1020	697	460	ALT						
	1010	687	450	(HGT)						
										NA

STRAIGHT-IN	CAT	A	B	C	D	E
	DA / (OCH)	320' / (310')				NA
LNAV/VNAV	ALS/NO ALS/ RVR ALS (m)	NIL / 1400 / NIL				NA
	MDA / (OCH)	460' / (450')				
LNAV	ALS/NO ALS/ RVR ALS (m)	NIL / 1600 / NIL		NIL / 1800 / NIL		
	MDA / (OCH)	NA				
CIRCLING	MDA / (OCH)	NA				
	VIS (m)	NA				