

**INSTRUMENT APPROACH
CHART (IAC)**

AD ELEV: 2051'

CAMPO GRANDE / Estância Santa Maria (SSKG)

**USO EXCLUSIVO ACFT MILITARES
MILITARY ACFT ONLY**

RNP RWY 24

(CAT A, B, C)

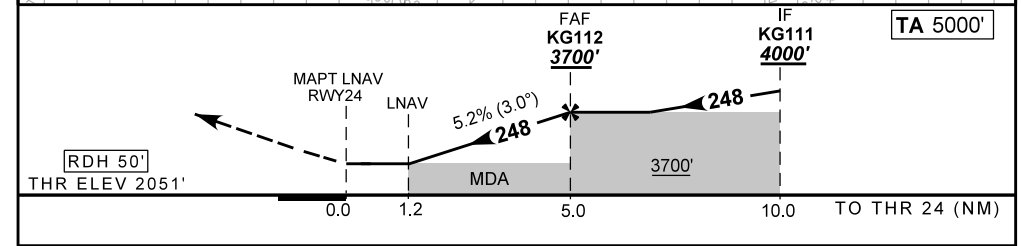
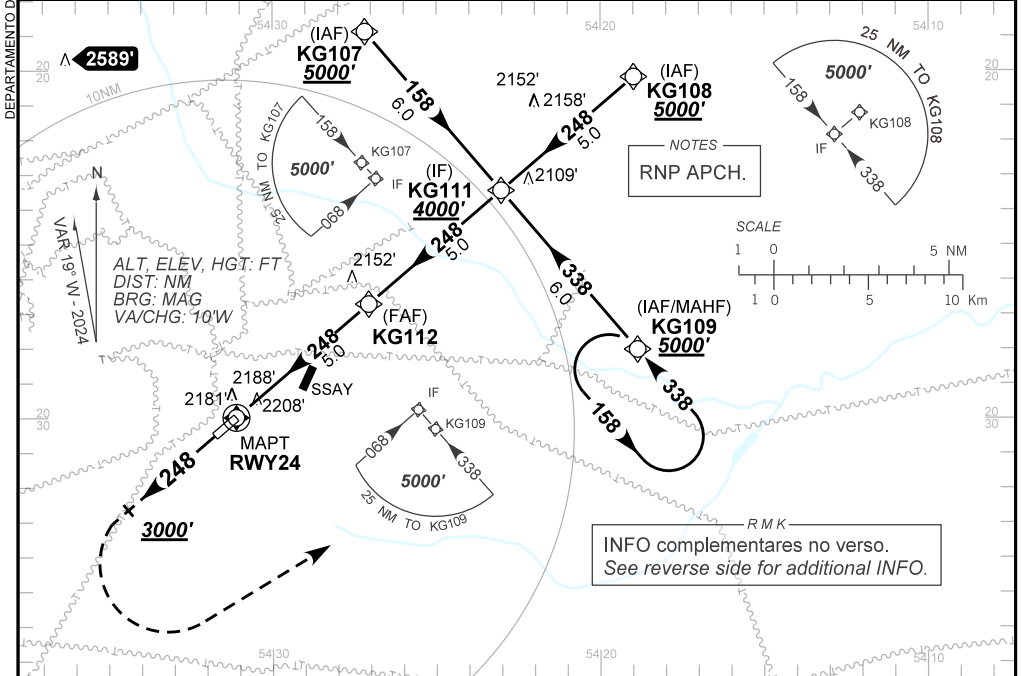
D-ATIS 127.60	APP CAMPO GRANDE 119.35 119.65 120.20 121.00	TWR CAMPO GRANDE 118.10	GNDC NIL
-------------------------	--	-----------------------------------	--------------------

NA	FINAL CRS 248°	FAF: 3700'	NA	LNVA MDA / (OCH): 2480' / (430')
-----------	--------------------------	----------------------	-----------	--

APCH Perdida: Subir para **5000'**. Manter proa **248** até **3000'**. Após curvar à ESQUERDA direto KG109 para espera.

Missed APCH: Climb to **5000'**. Maintain heading **243** until **3000'**. After, turn LEFT direct KG109 for holding.

RMK: Realização do procedimento condicionada às regras específicas definidas pelo COMAER.
Procedure according to specific rules defined by COMAER.



RWY24	1.2	2.0	3.0	4.0	KG112		Ground Speed (KT)	090	110	130	150	170	190
ALT	2480	2738	3056	3375	3700		FPM	500	600	700	800	900	NA
(HGT)	430	687	1005	1324	1649		FAF-MAPT	NIL					

STRAIGHT-IN	CAT	A	B	C	D	E
	DA / (OCH)	NA				
LNAV/VNAV	ALS/NO ALS/ RVR ALS (m)	NA				
	MDA / (OCH)	2480' / (430')				
LNAV RASS (SBCG)	ALS/NO ALS/ RVR ALS (m)	NIL / 1600 / NIL		NIL / 2000 / NIL		
	MDA / (OCH)	NA				
CIRCLING	MDA / (OCH)	NA				
	VIS (m)	NA				

AIRAC AMDT 2411A1 31 OCT 24

USO EXCLUSIVO ACFT MILITARES / MILITARY ACFT ONLY

SBKG_IAC_00C 1/2

IAC RNP RWY 24

CHANGES: NEW CHART.

DEPARTAMENTO DE CONTROLE DO ESPAÇO AÉREO

DEPARTAMENTO DE CONTROLE DO ESPAÇO AÉREO

— R M K —

2 - Utilizar o altímetro de SBCG.
Use altimeter setting from SBCG.

3 - Dados complementares:
Complementary data:

IDENT	LATITUDE/LONGITUDE
KG107	S 20:18.88 / W 54:27.18
KG108	S 20:20.19 / W 54:18.99
KG109	S 20:28.03 / W 54:18.87
KG111	S 20:23.46 / W 54:23.03
KG112	S 20:26.72 / W 54:27.07
RWY24	S 20:29.99 / W 54:31.11

CHANGES: NEW CHART.