

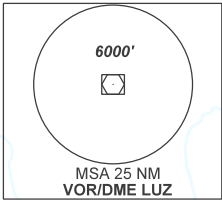
STANDARD DEPARTURE CHART
INSTRUMENT (SID)

BRASÍLIA / Pres. Juscelino Kubitschek, INTL (SBBR)
RWY 29L
LUZ 1A

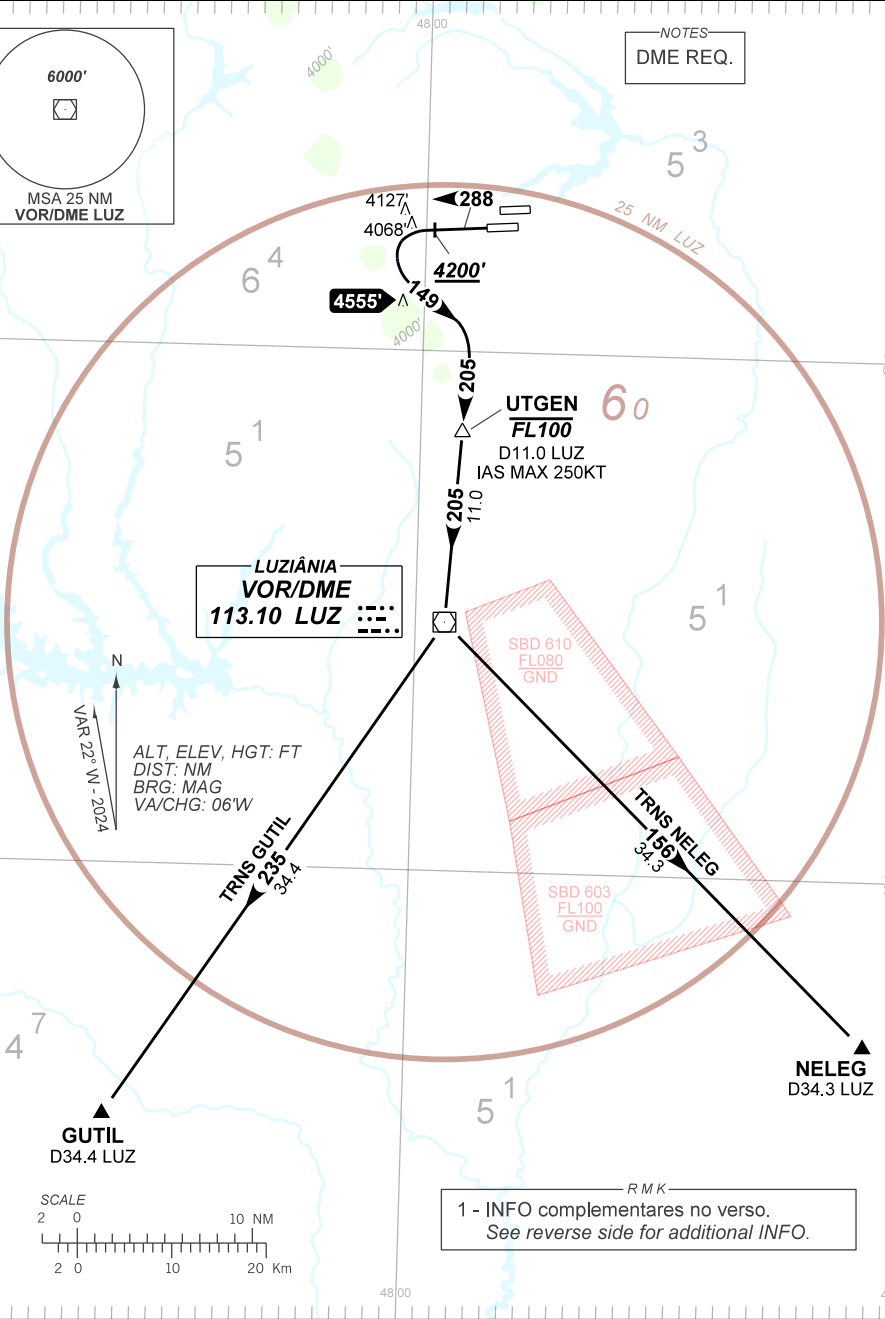
AD ELEV: 3498'

TA 7000'	D-ATIS 127.80	TWR BRASÍLIA 118.10 118.45 118.75	APP BRASÍLIA 119.50 129.15 129.60	ACC BRASÍLIA 123.75 124.30 125.05 125.55
----------	------------------	---	---	--

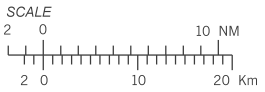
DEPARTAMENTO DE CONTROLE DO ESPAÇO AÉREO



NOTES
DME REQ.



ALT, ELEV, HGT: FT
DIST: NM
BRG: MAG
VA/CHG: 06'W



RMK
1 - INFO complementares no verso.
See reverse side for additional INFO.

CHANGES: DEC. EAC. RMK.

— R M K —

2 - BTN 0100-0900 UTC, executar o PROC de atenuação de ruído específico do EQPT ou manter V2+10KT até 4300', após BTN V2+10KT e V2+20KT até 6500'.

BTN 0100-0900 UTC, execute specific noise abatement PROC of EQPT or maintain V2+10KT until 4300', after BTN V2+10KT and V2+20KT until 6500'.

3 - Obstáculos próximos não considerados para o cálculo do PDG :

Close-in obstacles not considered for procedure gradient PDG:

RWY29L: Torre / Tower, a partir de / from THR11L, AZM266, DIST 1422m, ELEV 3491'.

Árvore / Tree, a partir de / from THR11R, AZM262, DIST 499m, ELEV 3555'.

Árvore / Tree, a partir de / from THR11R, AZM292, DIST 535m, ELEV 3558'.

4 - Compulsório curva à ESQUERDA após 4200'.

Compulsory LEFT turn after 4200'.

5 - Não poderá ser utilizada em operações DPSI.

It must not be used in DPSI operation.