

**INSTRUMENT APPROACH
CHART (IAC)**

RIO DE JANEIRO / Santos Dumont (SBRJ)

AD ELEV: 10'

RNP X RWY 02R (AR)

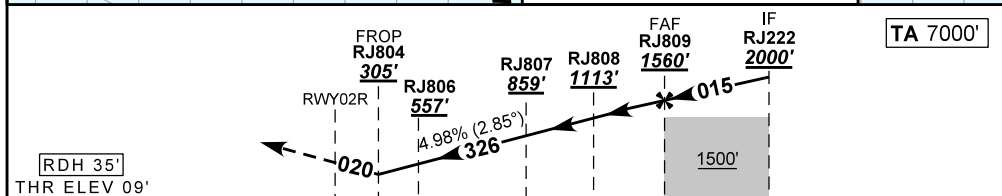
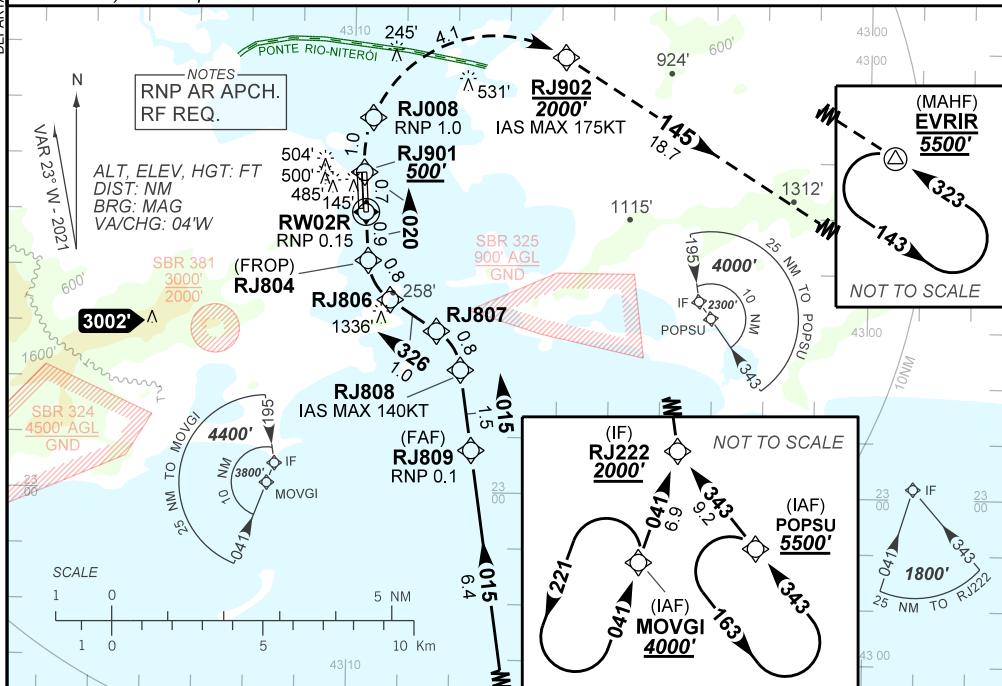
DEPARTAMENTO DE CONTROLE DO ESPAÇO AÉREO

D-ATIS 132.65	APP RIO 133.30 124.95 134.95 126.20 129.80 128.90 119.35 125.95 134.40 121.25	TWR RIO 118.70	GNDC RIO 121.70
-------------------------	---	--------------------------	---------------------------

TEMP LNAV/VNAV MIN 4°C / MAX 45°C	FINAL CRS 020	FAF: 1560'	RNP 0.1 DA / (OCH): 305' / (296')	N/A
---	-------------------------	----------------------	---	------------

APCH Perdida: 1) Subir para **5500'**. Manter rumo **020** até RJ901. Após, curvar à DIREITA até RJ902. Após, rumo **145** até EVRIR para espera. 2) RNP menor que 1.0.
Missed APCH: 1) Climb to **5500'**. Maintain course **020** until RJ901. After, turn **RIGHT** until RJ902. After, maintain course **145** until EVRIR for holding. 2) RNP below 1.0.

RMK: 1) Não efetuar transição para RNP da aproximação perdida antes de 0.87NM de RWY02R. 2) Trajetória vertical e PAPI não coincidentes. 1) Do not perform RNP transition of Missed APCH before 0.87NM from RWY02R. 2) Vertical path and PAPI not coincident.



		0.0	0.87	1.7	2.7	3.5	5.0	11.4	TO THR 02R (NM)				
RWY02R	0.87	1.0	2.0	3.0	4.0	RJ809							
ALT	305	346	649	951	1254	1560							
(HGT)	296	337	640	942	1245	1551							
							Ground Speed (KT)	090	110	130	150	170	190
							FPM	500	600	700	800	NA	
							FAF-MAPT	NIL					

STRAIGHT-IN	CAT	A	B	C	D	E
RNP 0.1	DA / (OCH)	305' / (296')			NA	
	ALS/NO ALS/ RVR ALS (m)	NIL / 1600 / NIL				

**AUTORIZAÇÃO ESPECIAL PARA AERONAVE E TRIPULAÇÃO REQUERIDA
SPECIAL AUTHORIZATION FOR AIRCRAFT AND CREW REQUIRED**

CHANGES: IDENT, LAYOUT, VAR.