

**INSTRUMENT APPROACH  
CHART (IAC)**

**PORTO ALEGRE / Salgado Filho, INTL (SBPA)**

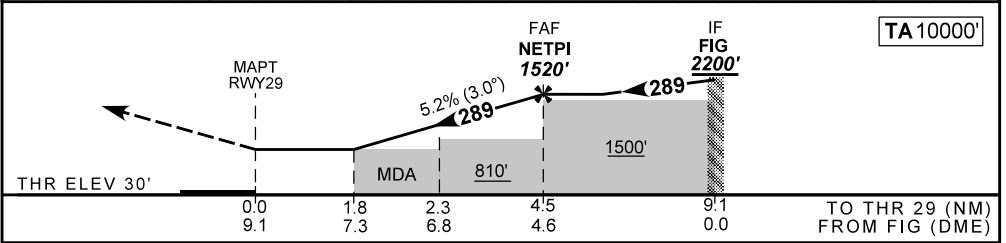
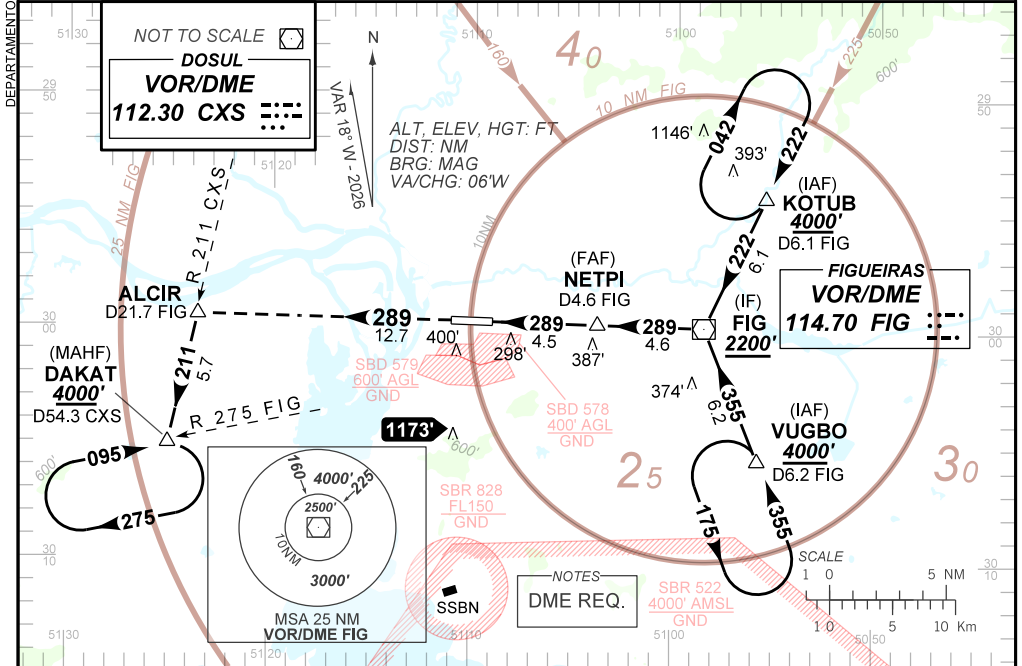
**AD ELEV: 30'**

**VOR Y RWY 29**

D-ATIS <b>132.35</b>	APP PALEGRE <b>119.00 120.10 120.55 128.90</b>			TWR PALEGRE <b>118.10</b>	GNDC PALEGRE <b>121.90</b>
VOR/DME FIG <b>114.70 MHz</b>	FINAL CRS <b>289°</b>	FAF: <b>1520'</b>	N/A	VOR MDA / (OCH): <b>650' (620')</b>	

APCH Perdida: Subir para **4000'**. Manter RDL **289** VOR FIG até ALCIR. Após, curvar à ESQUERDA RDL **271** VOR CXS para espera em DAKAT.

Missed APCH: Climb to **4000'**. Maintain **289** RDL FIG VOR until ALCIR. After, turn LEFT **271** RDL CXS VOR for holding at DAKAT.



RWY 29	1.8	2.3	3.0	4.0	NETPI	Ground Speed (KT)	090	110	130	150	170	190
ALT	650	812	1035	1354	1520	FPM	500	600	700	800	900	1000
(HGT)	620	782	1005	1324	1490	FAF-MAPT	NA					

STRAIGHT-IN	CAT	A	B	C	D	E
	MDA / (OCH)	650' / (620')				
VOR	ALS/NO ALS/ RVR (m)	NIL / 1600 / NIL			NIL / 2800 / NIL	
	MDA / (OCH)	NA				
CIRCLING	VIS (m)	NA				

CHANGES: MINM OPR. TA. VAR.