

**INSTRUMENT APPROACH  
CHART (IAC)**

**CHAPECÓ / Serafin Enoss Bertaso (SBCH)**

**AD ELEV: 2154'**

**RNAV(RNP) Y RWY 11**

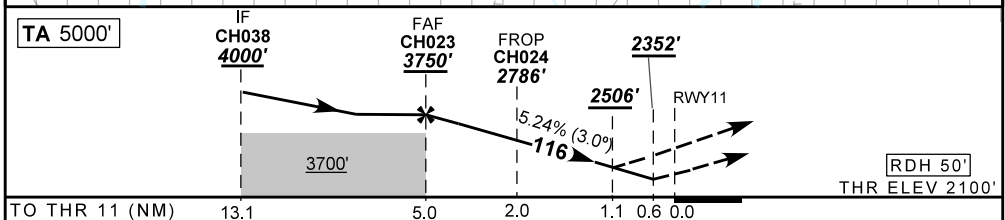
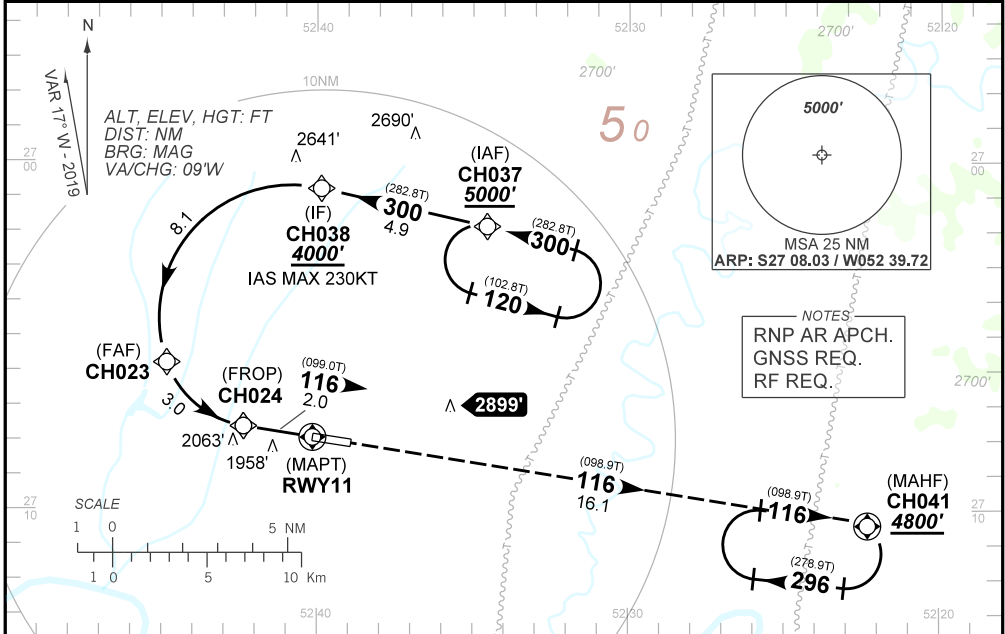
ATIS NIL	APP NIL	AFIS Chapecó 130.85		GNDC NIL
LOC ICT N/A	FINAL CRS 116°	FAF: 3750'	RNP 0.3 (Missed APCH 4,0%) DA / (OCH): 2352' / (252')	RNP 0.3 (Missed APCH 2,5%) DA / (OCH): 2506' / (406')

APCH Perdida: Subir para **4800'**. Manter rumo **116** para o CH041 para espera. (\*) Gradiente de subida 4 % até **2900'**.

Missed APCH: Climb to **4800'**. Maintain course **116** to CH041 for holding. (\*) 4.0% Climb gradient until **2900'**.

RMK: Para sistemas não compensados Baro-VNAV, LNAV/VNAV NÃO AUTORIZADO abaixo de 0°C ou acima de 42°C.

For uncompensated systems Baro-VNAV, LNAV/VNAV NOT AUTHORIZED below 0°C or above 42°C.



	CH023	4.0	3.0	CH024	0.6	RWY11	KT	090	110	130	150	170	190
	3750	3424	3105	2786	2352	ALT	FPM	500	600	700	800	NA	NA
	1650	1324	1005	686	252	(HGT)	FAF-MAPT	NA					

STRAIGHT-IN	CAT	A	B	C	D	E
RNP 0.3 (*)	DA / (OCH)			2352' / (252')		
Missed APCH Climb Gradient 4.0%	ALS/NO ALS/ RVR ALS (m)			NIL / 1600 / NIL		
RNP 0.3	DA / (OCH)			2506' / (406')		NA
Missed APCH Climb Gradient 2.5%	ALS/NO ALS/ RVR ALS (m)			NIL / 1900 / NIL		

**AUTORIZAÇÃO ESPECIAL PARA AERONAVE E TRIPULAÇÃO REQUERIDA  
SPECIAL AUTHORIZATION FOR AIRCRAFT AND CREW REQUIRED**

Aprovação Específica  
(ANAC IS 91.001)  
Específico Aeronave  
(ANAC IS 91.001)

CHANGES: NEW CHART.