

DEPARTURE CHART
INSTRUMENT (SID)

CANOAS / Campo Nossa Senhora de Fátima, MIL (SBCO)

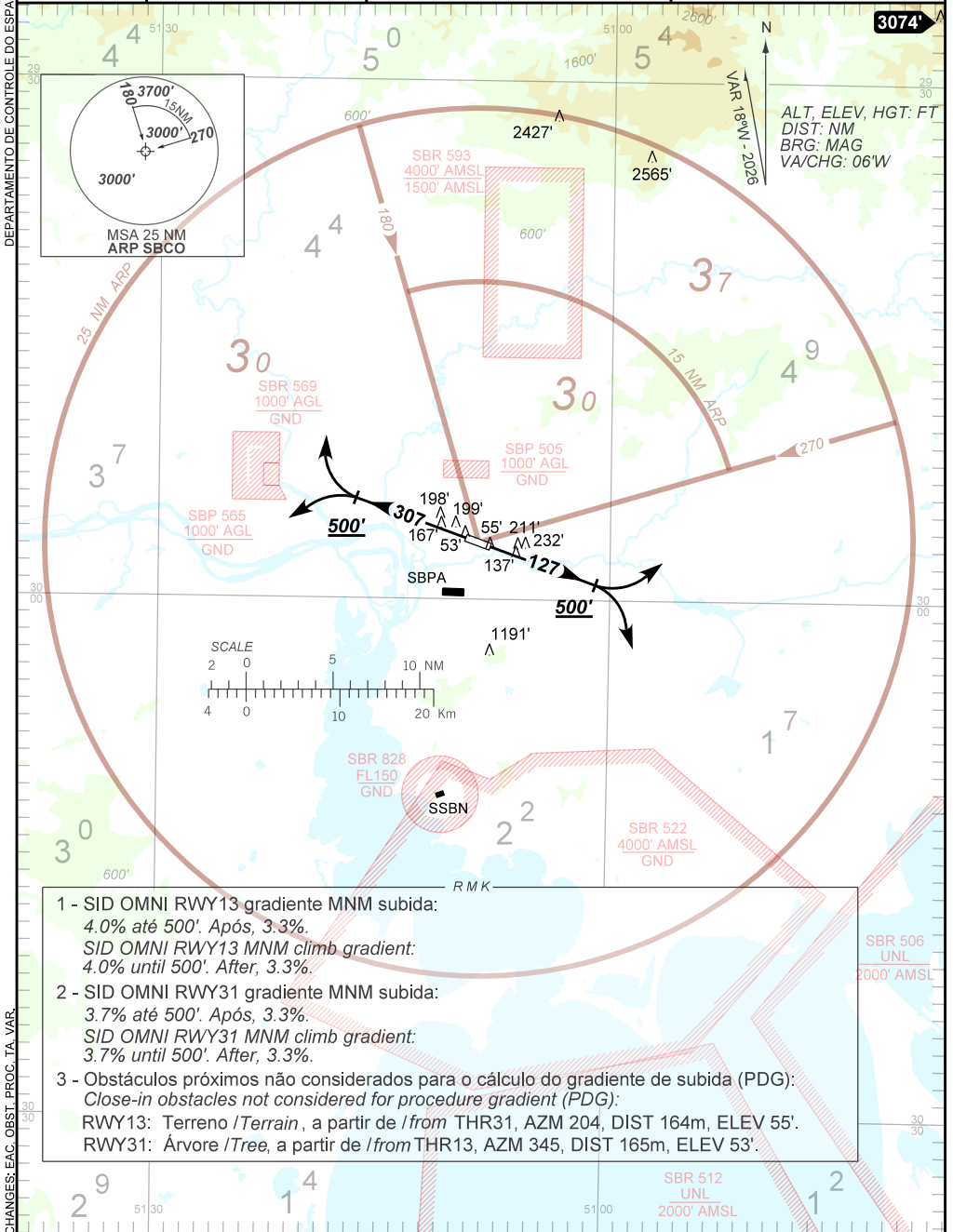
RWY 13/31

OMNI

AD ELEV: 26'

TA 10000'	TWR CANOAS 118.50 122.80 (MIL)	APP PALEGRE 119.00 120.10 120.55 128.90	ACC CURITIBA 126.75 134.25 135.85 128.45
-----------	-----------------------------------	--	---

DEPARTAMENTO DE CONTROLE DO ESPAÇO AÉREO



ALT, ELEV, HGT: FT
DIST: NM
BRG: MAG
VA/CHG: 06'W



- SID OMNI RWY13 gradiente MNM subida:
4.0% até 500'. Após, 3.3%.
SID OMNI RWY13 MNM climb gradient:
4.0% until 500'. After, 3.3%.
- SID OMNI RWY31 gradiente MNM subida:
3.7% até 500'. Após, 3.3%.
SID OMNI RWY31 MNM climb gradient:
3.7% until 500'. After, 3.3%.
- Obstáculos próximos não considerados para o cálculo do gradiente de subida (PDG):
Close-in obstacles not considered for procedure gradient (PDG):
RWY13: Terreno /Terrain, a partir de /from THR31, AZM 204, DIST 164m, ELEV 55'.
RWY31: Árvore /Tree, a partir de /from THR13, AZM 345, DIST 165m, ELEV 53'.

CHANGES: EAC, OBST, PROC, TA, VAR