

**INSTRUMENT APPROACH  
CHART (IAC)**

**VILHENA / Vilhena (SBVH)**

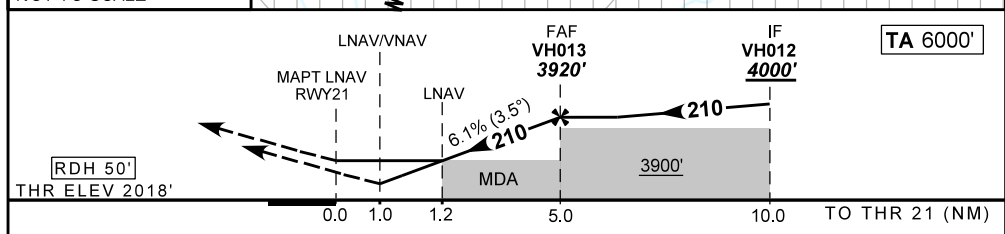
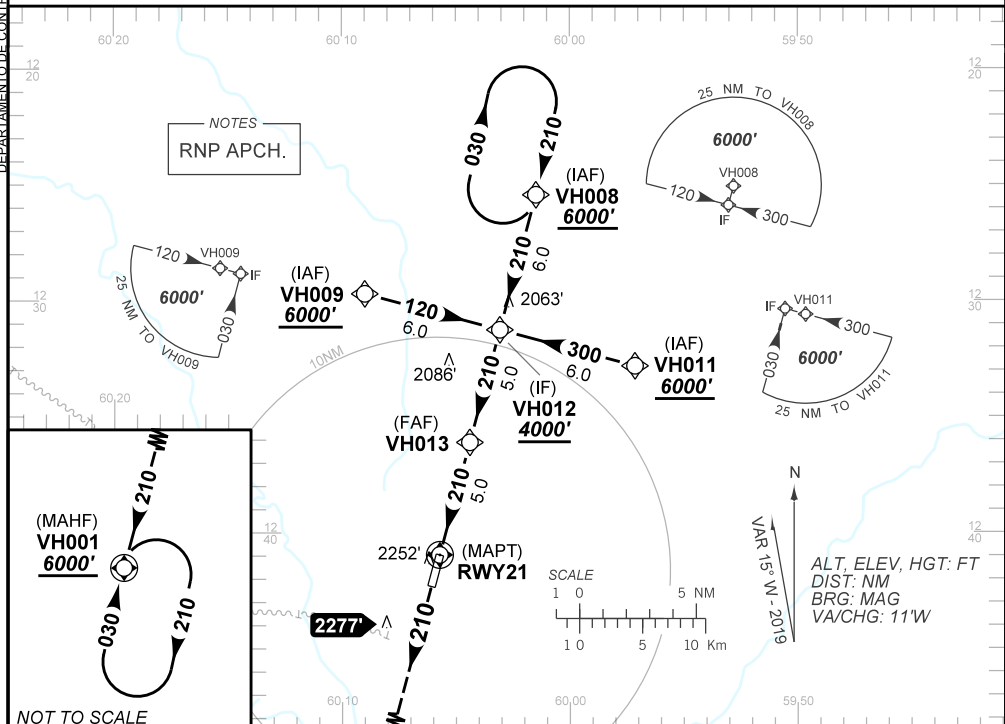
**RNP Y RWY 21**

**AD ELEV: 2018'**

ATIS <b>NIL</b>	ACC AMAZÔNICO <b>128.30 123.85 128.05</b>	R-AFIS VILHENA <b>125.90</b>	GNDC <b>NIL</b>
TEMP LNAV/VNAV <b>MIN 0°C / MAX 50°C</b>	FINAL CRS <b>210°</b>	FAF: <b>3920'</b>	LNAV/VNAV DA / (OCH): <b>2451' / (433')</b>
		LNAV MDA / (OCH): <b>2500' / (490')</b>	

APCH Perdida: Subir para **6000'**. Manter rumo **210** até VH001 para espera.  
Missed APCH: Climb to **6000'**. Maintain course **210** until VH001 for holding.

DEPARTAMENTO DE CONTROLE DO ESPAÇO AÉREO



RWY21	1.2	2.0	3.0	4.0	VH013	Ground Speed (KT)	090	110	130	150	170	190
ALT	2500	2811	3183	3554	3920	FPM	560	690	810	930	1060	NA
(HGT)	490	793	1165	1536	1902	FAF-MAPT	NA					

STRAIGHT-IN	CAT	A	B	C	D	E
	DA / (OCH)	2451' / (433')				NA
LNAV/VNAV	ALS/NO ALS/ RVR ALS (m)	NIL / 2000 / NIL				NA
	MDA / (OCH)	2500' / (490')				
LNAV	ALS/NO ALS/ RVR ALS (m)	NIL / 2000 / NIL		NIL / 2300 / NIL		
	MDA / (OCH)	NA				
CIRCLING	MDA / (OCH)	NA				
	VIS (m)	NA				

CHANGES: ALT, FREQ, IDENT, LAYOUT.