

**INSTRUMENT APPROACH
CHART (IAC)**

FORTALEZA / Pinto Martins, INTL (SBFZ)

AD ELEV: 83'

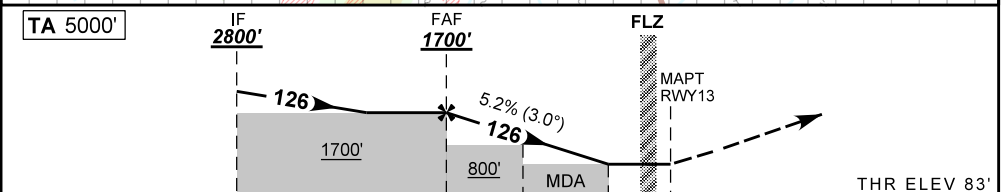
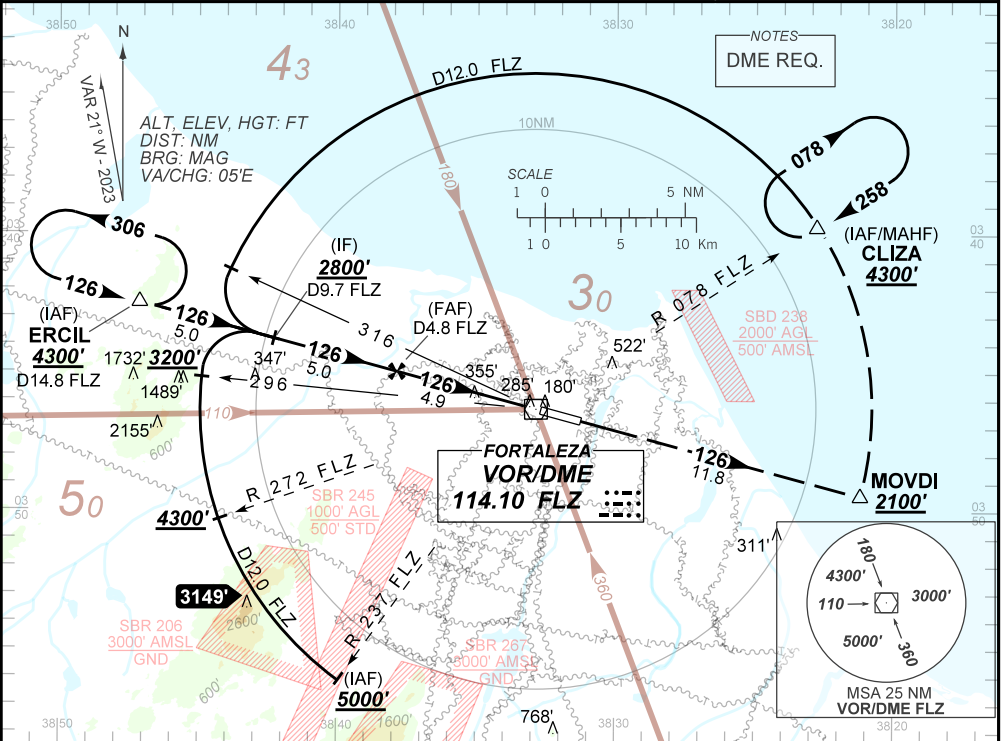
VOR Y RWY 13

D-ATIS 127.70	APP FORTALEZA 120.50 133.00 134.55			TWR FORTALEZA 129.00	GNDCL FORTALEZA 121.95
VOR FLZ 114.10 MHz	FINAL CRS 126°	FAF: 1700'	N/A	VOR MDA / (OCH): 540' / (460')	

APCH Perdida: 1) Subir para **4300'**. Manter rumo **126** até MOVDI. Após, curvar à ESQUERDA para interceptar arco DME 12.0 NM do VOR FLZ até CLIZA para espera. 2) IAS MAX 230KT.

Missed APCH: 1) Climb to **4300'**. Maintain course **126** until MOVDI. After, turn LEFT to intercept 12.0 NM DME arc FLZ VOR until CLIZA for holding. 2) IAS MAX 230KT.

DEPARTAMENTO DE CONTROLE DO ESPAÇO AEREO



TO THR 13 (NM)	9.9	4.9	2.1	1.3	0.2	0.0
TO FLZ (DME)	9.8	4.8	2.0	1.2	0.0	0.2

FAF	4.0	3.0	2.1	1.3	RWY 13					
1700	1407	1088	802	540	ALT					
1617	1324	1005	719	460	(HGT)					
Ground Speed (KT)					090	110	130	150	170	190
FPM					500	600	700	800	900	1000
FAF-MAPT					NA					

STRAIGHT-IN	CAT	A	B	C	D	E
	MDA / (OCH)	540' / (460')				
VOR	ALS/NO ALS/ RVR (m)	NIL / 1600 / NIL			NIL / 2100 / NIL	
	MDA / (OCH)	NA				
CIRCLING	VIS (m)	NA				

CHANGES: EAC. PROC.