

STANDARD DEPARTURE CHART SÃO PEDRO DA ALDEIA / Tenente Jorge Henrique Möller, MIL (SBES)
INSTRUMENT (SID) RWY 07

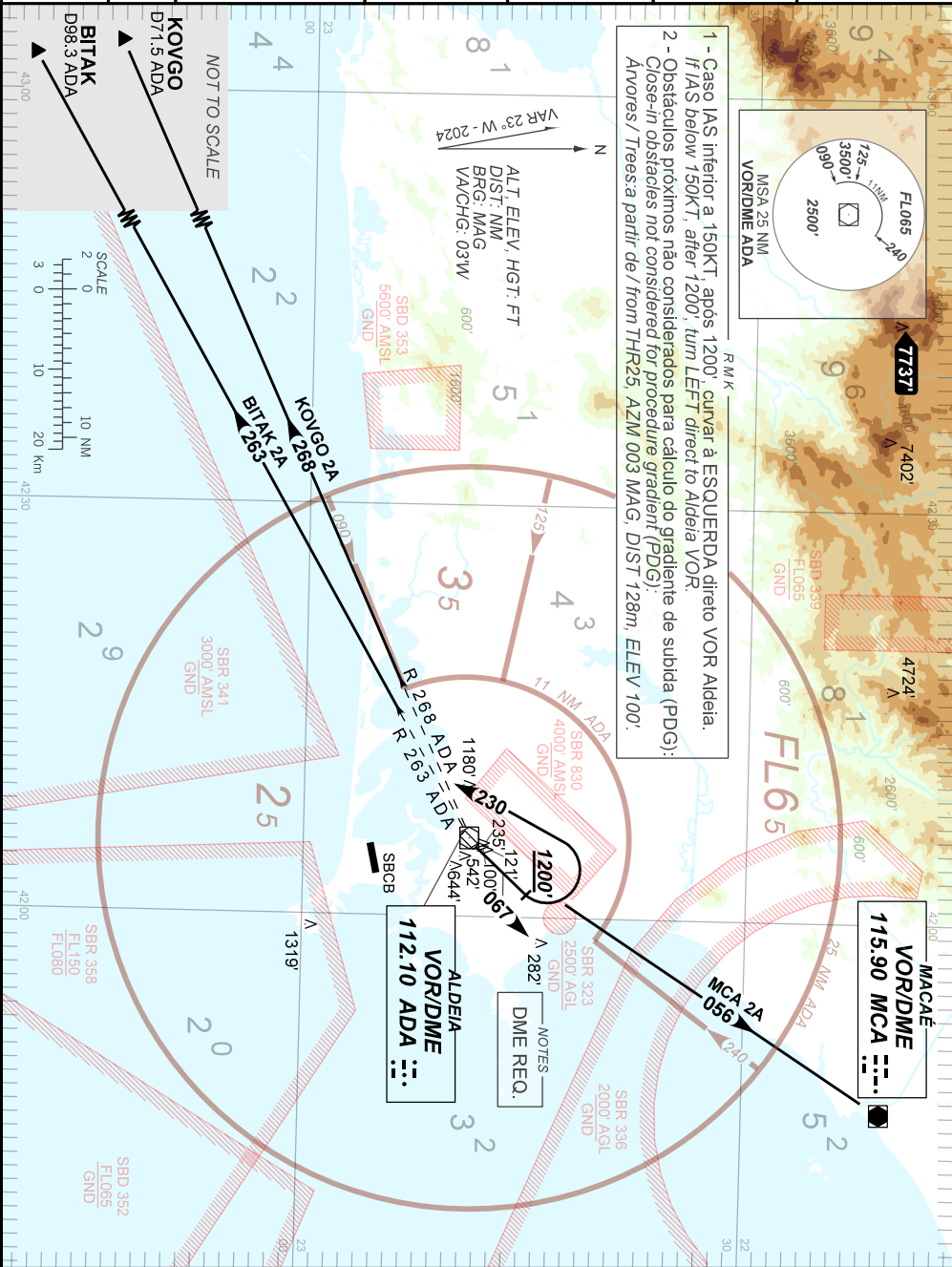
BITAK 2A - KOVGO 2A - MCA 2A

AD ELEV: 61'

TA 5000'	ATIS NIL	TWR ALDEIA 118.30 122.80 (MIL)	APP ALDEIA 119.45 120.30	APP RIO 119.00 119.35 126.20 133.30	APP MACAÉ 119.20 120.00 129.30	ACC CURITIBA 125.35 124.00 133.40 133.60
----------	-------------	-----------------------------------	-----------------------------	---	--------------------------------------	--

DEPARTAMENTO DE CONTROLE DO ESPAÇO AEREO

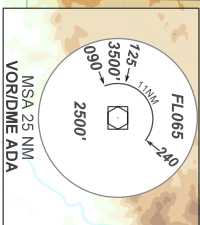
CHANGES: EAC, OBST VAR.



1 - Caso IAS inferior a 150KT, após 1200', curvar à ESQUERDA direto VOR Aldeia.
If IAS below 150KT, after 1200', turn LEFT direct to Aldeia VOR.
2 - Obstáculos próximos não considerados para cálculo do gradiente de subida (PDG):
Close-in obstacles not considered for procedure gradient (PDG):
Árvores / Trees a partir de / from THR25, AZM 003 MAG; DIST 128m; ELEV 100'.

ALDEIA
VORDME
112.10 ADA

MACAÉ
VORDME
115.90 MCA



NOTES
DME REQ.